

# SECTIONAL OVERHEAD DOORS

PRINT 5



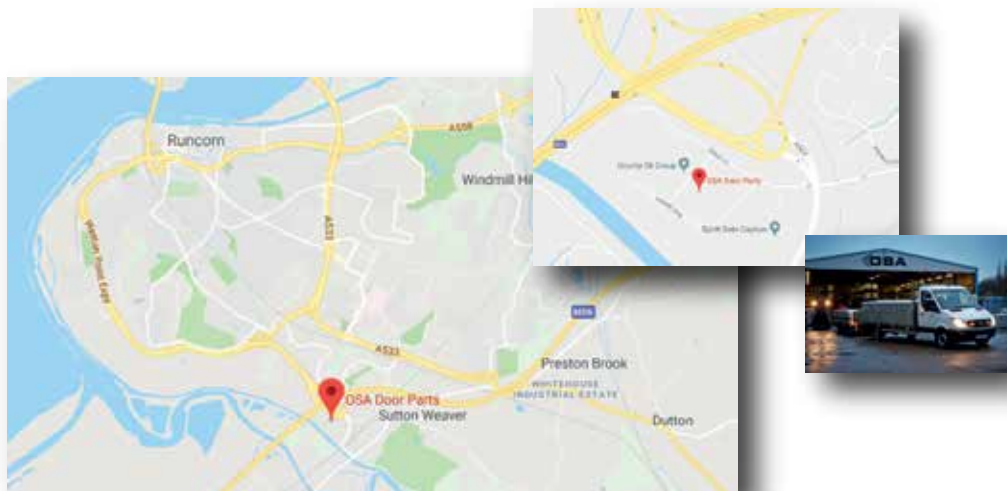
 **OSA**

DOOR PARTS

TRADE SUPPLIERS

PARTS CATALOGUE

# SECTIONAL OVERHEAD DOOR PARTS HOW TO FIND US



 **OSA**  
DOOR PARTS  
TRADE SUPPLIERS

**Tel:** 01928 703 580

**Fax:** 01928 759 984

E-mail: [sales@osadoorparts.co.uk](mailto:sales@osadoorparts.co.uk)

[www.osadoorparts.co.uk](http://www.osadoorparts.co.uk)

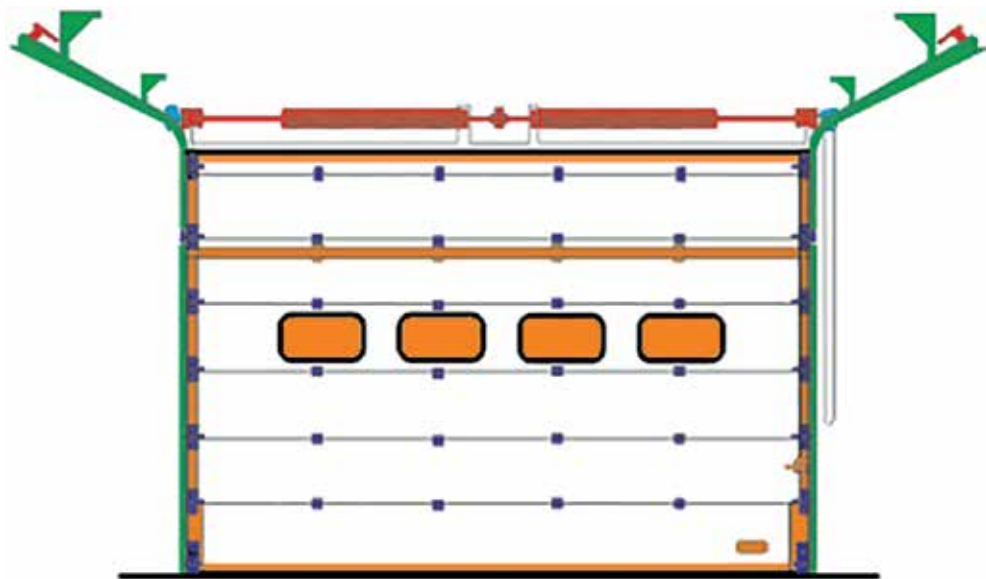
ASHVILLE INDUSTRIAL ESTATE,  
RUNCORN, CHESHIRE, WA7 3EZ



Raising Standards  
Safety Assured

# SECTIONAL OVERHEAD DOOR PARTS

## CONTENTS



SPRING ASSEMBLY

1 - 21

TRACK ASSEMBLY

22 - 39

HARDWARE

40 - 49

PANELS & PANEL ACCESSORIES

50 - 65

OPERATORS

66 - 74

STEEL HINGED DOORS

75 - 80

HIGH SPEED DOOR PARTS

81 - 87

VISIT OUR WEBSITE:  
[WWW.OSADOORPARTS.CO.UK](http://WWW.OSADOORPARTS.CO.UK)



# INDEX

## SPRING ASSEMBLY



Cable Drums



Spring Filler



Aircraft Cable And Fittings



Bearings



Bearing Plates



Tensioning Tools



Spring Fittings



Low Level Spring Components



C-Type Spring Adaptors



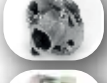
Shaft



Springs



Shaft Adaptors



Couplers



Keys



Mobile Bench Swager



Spring Failure Safety Devices



Locking Collars



Cable Tension Kits

## TRACK ASSEMBLY



Vertical Angles



Low Headroom Tracks



Track Side Seal



Horizontal Track



Spring Bumpers



Installation Angle



Vertical Track



Sheaves/Pulley



Fixings/Bolts



Horizontal 'C' Channel



Track Clips & Plates

## HARDWARE



Rollers & Spacers



Roller Carriers & Side Hinges



Intermediate Hinges



Bottom Corner Brackets



Top Roller Carriers



Cable Break Safety Devices

VISIT OUR WEBSITE:  
[WWW.OSADOORPARTS.CO.UK](http://WWW.OSADOORPARTS.CO.UK)





## PANELS & ACCESSORIES



Windows



Ventilation Grills



Panel Adaptor



Safety Edge Bottom Seals



End Caps



Top/Bottom Retainers



Top Seals



Shoot Bolts



Wicket Door/ Gate Kits



Bottom Seals



Side Locks



Foot Step Handle



Panel Struts

## OPERATORS



Chain Hosts



Pneumatic Safety



Hand Chain & Rope



Electric Operators



Chain Keeps



Electric Safety Operation Safety Equipment

## STEEL HINGED DOORS



Steel Door Sets



Steel Hinged Door Accessories

## HIGH SPEED DOOR PARTS



Bottom Bars



Belt Guides



Lifting Belts

VISIT OUR WEBSITE:  
[WWW.OSADOORPARTS.CO.UK](http://WWW.OSADOORPARTS.CO.UK)



# SECTIONAL OVERHEAD DOOR PARTS

\* OSA stocks a comprehensive range of ALL sectional overhead door parts.

We have included the most commonly used items in this catalogue, but if you do not find what you require please contact us.

\*Stainless Steel components available.

*We reserve the right to modify contents and specification in this catalogue without prior notice. Our standard terms and conditions of sale apply, a copy of which is available on request.*



VISIT OUR WEBSITE:  
[WWW.OSADOORPARTS.CO.UK](http://WWW.OSADOORPARTS.CO.UK)



**1001****CABLE DRUM 400-13 - STANDARD LIFT**

2 safety wraps for the cable  
 Maximum Door Height: 4005mm  
 Maximum Door Weight: 341kg  
 Diameter Shaft: 25.4mm (1")  
 Maximum Cable Diameter: 4mm  
 Bearing Plate: 86mm  
 Cross Ref: FF-NL-13 - M102 3965

**1002****CABLE DRUM 5250-18 - STANDARD LIFT**

2 safety wraps for the cable  
 Maximum Door Height: 5570mm  
 Maximum Door Weight: 500kg  
 Diameter Shaft: 25.4mm (1")  
 Maximum Cable Diameter: 5mm  
 Bearing Plate: 111mm  
 Cross Ref: FF-NL-18 - M134 5500

**1003****CABLE DRUM 800-32- STANDARD LIFT**

2 safety wraps for the cable  
 Maximum Door Height: 10175mm  
 Maximum Door Weight: 700kg  
 Diameter Shaft: 25.4mm (1")  
 Maximum Cable Diameter: 6mm  
 Bearing Plate: 152mm  
 Cross Ref: FF-NL-32 - M203 9750

**1011****CABLE DRUM 5250-54- HIGH LIFT**

2 safety wraps for the cable  
 Maximum Door Height: 4800mm (Max Hi-Lift 1370mm)  
 Maximum Door Weight: 500kg  
 Diameter Shaft: 25.4mm (1")  
 Maximum Cable Diameter: 5mm  
 Bearing Plate: 111mm  
 Cross Ref: FF-HL-54 - TF- M134 1375 HL

VISIT OUR WEBSITE:  
[WWW.OSADOORPARTS.CO.UK](http://WWW.OSADOORPARTS.CO.UK)



**1013****CABLE DRUM 5750-120 - HIGH LIFT**

2 safety wraps for the cable  
 Maximum Door Height: 5020mm(Max Hi-Lift 3010mm)  
 Maximum Door Weight: 450kg  
 Diameter Shaft: 25.4mm (1")  
 Maximum Cable Diameter: 5mm  
 Bearing Plate: 127mm  
 Cross Ref: FF-HL-120 - M146 3050 HL

**1015****CABLE DRUM 6375-164 - HIGH LIFT**

2 safety wraps for the cable  
 Maximum Door Height: 6000mm(Max Hi-Lift 4100mm)  
 Maximum Door Weight: 575kg  
 Diameter Shaft: 25.4mm (1")  
 Maximum Cable Diameter: 6mm  
 Bearing Plate: 152mm  
 Cross Ref: FF-HL-164 - M162 4165 HL

**1020****CABLE DRUM 850-11 - FULL VERTICAL LIFT**

2 safety wraps for the cable  
 Maximum Door Height: 3300mm  
 Maximum Door Weight: 500kg  
 Diameter Shaft: 25.4mm (1")  
 Maximum Cable Diameter: 5mm  
 Bearing Plate: 127mm  
 Cross Ref: FF-VL-11 - M216 3350 VL

**1021****CABLE DRUM 1100-18 - FULL VERTICAL LIFT**

2 safety wraps for the cable  
 Maximum Door Height: 6000mm  
 Maximum Door Weight: 500kg  
 Diameter Shaft: 25.4mm (1")  
 Maximum Cable Diameter: 5mm  
 Bearing Plate: 152mm  
 Cross Ref: FF-VL-18 - M280 5500 VL

VISIT OUR WEBSITE:  
[WWW.OSADOORPARTS.CO.UK](http://WWW.OSADOORPARTS.CO.UK)



**1022****CABLE DRUM 1350-28 - FULL VERTICAL LIFT**

Max opening with 2 safety wraps is 7000mm  
 Maximum Door Height: 8500mm  
 Maximum Door Weight: 750kg  
 Diameter Shaft: 25.4mm (1")  
 Maximum Cable Diameter: 6mm  
 Bearing Plate: 190mm  
 Cross Ref: FF-VL-28 - M340 8500 VL

**1023****CABLE DRUM 1350-28 (1 1/4) - FULL VERTICAL LIFT**

Max opening with 2 safety wraps is 7000mm  
 Maximum Door Height: 8500mm  
 Maximum Door Weight: 750kg  
 Diameter Shaft: 31.75mm (1 1/4")  
 Maximum Cable Diameter: 6mm  
 Bearing Plate: 190mm  
 Cross Ref: FF-VL-28-5/4 - M340 8500 VL

**1209****BEARING PLATE**

Material: Galvanised Steel  
 Offset: 190mm  
 Thickness: 4mm  
 4mm Galvanised Steel 25.4mm (1") dia. shaft  
 Dimensions: 230 x 165 x 48mm  
 Unit: Piece (1)  
 Weight: 1.22kg

**1210****BEARING PLATE**

Material: Galvanised Steel  
 Offset: 86mm  
 Thickness: 4mm  
 4mm Galvanised Steel 25.4mm (1") dia. shaft  
 Dimensions: 165 x 126 x 48mm  
 Unit: Piece (1)  
 Weight: 0.8kg

VISIT OUR WEBSITE:  
[WWW.OSADOORPARTS.CO.UK](http://WWW.OSADOORPARTS.CO.UK)



**1211****BEARING PLATE**

Material: Galvanised Steel  
 Offset: 111mm  
 Thickness: 4mm  
 4mm Galvanised Steel 25.4mm (1") dia. shaft  
 Dimensions: 165 x 152 x 48mm  
 Unit: Piece (1)  
 Weight: 0.93kg

**1212****BEARING PLATE**

Material: Galvanised Steel  
 Offset: 127mm  
 Thickness: 4mm  
 4mm Galvanised Steel 25.4mm (1") dia. shaft  
 Dimensions: 165 x 167 x 48mm  
 Unit: Piece (1)  
 Weight: 1.0kg

**1213****BEARING PLATE**

Material: Galvanised Steel  
 Offset: 152mm  
 Thickness: 4mm  
 4mm Galvanised Steel 25.4mm (1") dia. shaft  
 Dimensions: 165 x 192 x 48mm  
 Unit: Piece (1)  
 Weight: 1.13kg

**1220****UNIVERSAL CENTRE BEARING PLATE (USA)**

Material: Galvanised Steel  
 Offsets: 86mm - 152mm  
 Thickness: 4mm  
 4mm Galvanised Steel suitable for a bearing offset  
 of 86 -152mm  
 Dimensions: 225 x 140 x 48mm  
 Unit: Pair (2)  
 Weight: 1.48kg

VISIT OUR WEBSITE:  
[WWW.OSADOORPARTS.CO.UK](http://WWW.OSADOORPARTS.CO.UK)



**1230****BEARING 25.4MM (1")**

Inside Diameter: 25.4mm  
 Outside Diameter: 50.8mm  
 Flange Diameter: 53.8mm  
 Max Load: 102kg/bearing  
 Dimensions: 50.8 x 14.8mm  
 Unit: Piece (1)  
 Weight: 0.11kg each

**1231****BEARING RETAINER**

Inside Diameter: 50.8mm  
 Flange Diameter: 53.8mm  
 Thickness: 3mm  
 To Suit: 25.4mm (1") or 31.75mm (1 1/4") bearings  
 Dimensions: 112 x 70 x 12mm  
 Unit: Piece (1)  
 Weight: 0.11kg each

**1233****BEARING 31.75MM (1 1/4")**

Inside Diameter: 31.75mm (1 1/4")  
 Outside Diameter: 50.8mm  
 Flange Diameter: 53.8mm  
 Max Load: 102kg/bearing  
 Dimensions: 112 x 70 x 12mm  
 Unit: Piece (1)  
 Weight: 0.11kg each

**1249****M10 U BOLT**

Material: Galvanised Steel  
 For use with Box Beam (1252)  
 Unit: Piece (1)  
 Weight: 0.18kg

VISIT OUR WEBSITE:  
[WWW.OSADOORPARTS.CO.UK](http://WWW.OSADOORPARTS.CO.UK)





**1250****MOUNTING BRACKET**

Material: Galvanised Steel  
 Mounting Bracket Fixing Plate suitable for 100mm and 80mm box beams  
 For low level installation of spring assembly on High or Vertical Lift Track Systems  
 For use with Box Beam (1252 & 1256)  
 Dimensions: 550 x 550 x 40mm  
 Unit: Pair (2)  
 Weight: 3.37kg

**1252****BOX BEAM**

Material: Galvanised Steel  
 Length: 7000mm  
 Thickness: 3mm  
 Galvanised 100x100 welded box profile for installing spring assembly  
 For use with M10 U Bolt (1249)  
 Dimensions: 100 x 100mm  
 Unit: Piece (1)  
 Weight: 60.4kg

**1255****CAP FOR BOX BEAM**

Material: TPE Black  
 Cap for 100x100 Box Beam  
 Dimensions: 100 x 100 x 20mm  
 Unit: Piece (1)  
 Weight: 0.09kg

**1256****BOX BEAM**

Material: Galvanised Steel  
 Length: 7000mm  
 Galvanised 80x40 welded box profile for installing Spring Assembly  
 For use with Mounting Plate (1257)  
 Dimensions: 80 x 40 x 2mm  
 Unit: Piece (1)  
 Weight: 23.3kg

VISIT OUR WEBSITE:  
[WWW.OSADOORPARTS.CO.UK](http://WWW.OSADOORPARTS.CO.UK)



**1257****MOUNTING PLATE**

Material: Galvanised Steel  
 80 x 40  
 For use with Box Beam (1256)  
 Dimensions: 166 x 45 x 81mm  
 Unit: Piece (1)  
 Weight: 0.45kg

**1259****PULLEY FOR LOW LEVEL SPRING BEAM - LEFT HAND**

Material: Galvanised Steel  
 Galvanised steel LH Pulley for Low Level Spring  
 Beam Assembly  
 Maximum Door Weight: 600kg  
 Maximum Cable Diameter: 6mm  
 Dimensions: 202.8 x 149 x 29.5mm  
 Unit: Piece (1)  
 Weight: 1.46kg

**1260****PULLEY FOR LOW LEVEL SPRING BEAM - RIGHT HAND**

Material: Galvanised Steel  
 Galvanised steel RH Pulley for Low Level Spring  
 Beam Assembly  
 Maximum Door Weight: 600kg  
 Maximum Cable Diameter: 6mm  
 Dimensions: 202.8 x 149 x 29.5mm  
 Unit: Piece (1)  
 Weight: 1.46kg

**1308****SPRING FITTINGS - 600 S SBR + WS (1 1/4")**

Spring I.D: 152mm (6")  
 Material: Aluminium  
 Maximum Wire: 11mm  
 Diameter Shaft: 31.75mm (1 1/4")  
 1 Set: 1 pair left & 1 pair right (4)  
 single thread 152 for left and right hand wound springs  
 Unit: Set (1)  
 Weight: 3.7kg/set

VISIT OUR WEBSITE:  
[WWW.OSADOORPARTS.CO.UK](http://WWW.OSADOORPARTS.CO.UK)



**1310****SPRING FITTINGS - 334 U SHORT EAR**

Spring I.D.: 95mm (3 3/4")  
 Material: Aluminium  
 Maximum Wire: 9.5mm  
 Universal 95 for use on Duplex applications  
 Unit: piece (1)  
 Weight: 0.40kg/set

**1311 - 1312****SPRING FITTING - 258 U SBR + WS**

Spring I.D. : 67mm (2 5/8")  
 Material: Aluminium  
 Maximum Wire: 8.5mm  
 Diameter Shaft: 25.4mm (1")  
**Universal Winder - 1311**  
**Universal Stationary - 1312**  
 Universal 67 for left and right handed springs  
 Unit: Piece (1)  
 Weight: 0.41kg

**1315 - 1318****SPRING FITTINGS - 334 U SBR + WS**

Spring I.D. : 95mm (3 3/4")  
 Material: Aluminium  
 Maximum Wire: 9.5mm  
 Diameter Shaft: 25.4mm (1")  
**LH Winder - 1315 / LH Stationary - 1316**  
**RH Winder - 1317 / RH Stationary - 1318**  
 Single Thread for left and right handed springs  
 Unit: Piece (1)  
 Weight: 0.69kg

**1319 - 1322****SPRING FITTINGS - 600 S SBR + WS**

Spring I.D. : 152mm (6")  
 Material: Aluminium  
 Maximum Wire: 11mm  
 Diameter Shaft: 25.4mm (1")  
**LH Winder - 1319 / LH Stationary - 1320**  
**RH Winder - 1321 / RH Stationary - 1322**  
 Single Thread for left and right handed springs  
 Unit: Piece (1)  
 Weight: 0.69kg

VISIT OUR WEBSITE:  
[WWW.OSADOORPARTS.CO.UK](http://WWW.OSADOORPARTS.CO.UK)



**1596-1685****TORSION SPRINGS - METRIC WIRE SIZES**

**\*\*All springs are Shot Peened and Powder Coated\*\***

Benefits to these springs:

- Increased cycle life
- Lighter spring options
- Attractive design

Please see below for available sizes:

1596 Powder Coated 67 x 6.5 x 810mm LH  
 1597 Powder Coated 67 x 6.5 x 810mm RH  
 1598 Powder Coated 67 x 6.5 x 1010mm LH  
 1599 Powder Coated 67 x 6.5 x 1010mm RH  
 1600 Powder Coated 67 x 6.5 x 1210mm LH  
 1601 Powder Coated 67 x 6.5 x 1210mm RH  
 1603 Powder Coated 67 x 7.0 x 1210mm LH  
 1604 Powder Coated 67 x 7.0 x 1210mm RH  
 1605 Powder Coated 67 x 7.0 x 810mm LH  
 1606 Powder Coated 67 x 7.0 x 810mm RH  
 1607 Powder Coated 67 x 7.0 x 1010mm LH  
 1608 Powder Coated 67 x 7.0 x 1010mm RH  
 1610 Powder Coated 95 x 6.5 x 1010mm LH  
 1611 Powder Coated 95 x 6.5 x 1010mm RH  
 1612 Powder Coated 95 x 6.5 x 1310mm LH  
 1613 Powder Coated 95 x 6.5 x 1310mm RH  
 1614 Powder Coated 95 x 7.0 x 1010mm LH  
 1615 Powder Coated 95 x 7.0 x 1010mm RH  
 1616 Powder Coated 95 x 7.0 x 1310mm LH  
 1617 Powder Coated 95 x 7.0 x 1310mm RH  
 1618 Powder Coated 95 x 7.5 x 1010mm LH  
 1619 Powder Coated 95 x 7.5 x 1010mm RH  
 1620 Powder Coated 95 x 7.5 x 1310mm LH  
 1621 Powder Coated 95 x 7.5 x 1310mm RH  
 1622 Powder Coated 95 x 8.0 x 1010mm LH  
 1623 Powder Coated 95 x 8.0 x 1010mm RH  
 1624 Powder Coated 95 x 8.0 x 1310mm LH  
 1625 Powder Coated 95 x 8.0 x 1310mm RH  
 1626 Powder Coated 95 x 8.5 x 1010mm LH  
 1627 Powder Coated 95 x 8.5 x 1010mm RH  
 1628 Powder Coated 95 x 8.5 x 1310mm LH  
 1629 Powder Coated 95 x 8.5 x 1310mm RH  
 1630 Powder Coated 95 x 9.0 x 1010mm LH  
 1631 Powder Coated 95 x 9.0 x 1010mm RH  
 1632 Powder Coated 95 x 9.0 x 1310mm LH  
 1633 Powder Coated 95 x 9.0 x 1310mm RH  
 1634 Powder Coated 95 x 7.5 x 810mm LH  
 1635 Powder Coated 95 x 7.5 x 810mm RH  
 1636 Powder Coated 95 x 7.5 x 910mm LH  
 1637 Powder Coated 95 x 7.5 x 910mm RH  
 1638 Powder Coated 95 x 7.5 x 1170mm LH  
 1639 Powder Coated 95 x 7.5 x 1170mm RH  
 1640 Powder Coated 95 x 8.0 x 910mm LH

1641 Powder Coated 95 x 8.0 x 910mm RH  
 1642 Powder Coated 95 x 8.0 x 1170mm LH  
 1643 Powder Coated 95 x 8.0 x 1170mm RH  
 1645 Powder Coated 95 x 8.5 x 1170mm RH  
 1646 Powder Coated 152 x 8.5 x 910mm LH  
 1647 Powder Coated 152 x 8.5 x 910mm RH  
 1648 Powder Coated 152 x 8.5 x 1010mm LH  
 1649 Powder Coated 152 x 8.5 x 1010mm RH  
 1650 Powder Coated 152 x 8.0 x 1110mm LH  
 1651 Powder Coated 152 x 8.0 x 1110mm RH  
 1652 Powder Coated 152 x 8.0 x 1410mm LH  
 1653 Powder Coated 152 x 8.0 x 1410mm RH  
 1654 Powder Coated 152 x 8.5 x 1110mm LH  
 1655 Powder Coated 152 x 8.5 x 1110mm RH  
 1656 Powder Coated 152 x 8.5 x 1410mm LH  
 1657 Powder Coated 152 x 9.0 x 1410mm RH  
 1658 Powder Coated 152 x 9.0 x 1110mm LH  
 1659 Powder Coated 152 x 9.0 x 1110mm RH  
 1660 Powder Coated 152 x 9.0 x 1410mm LH  
 1661 Powder Coated 152 x 9.0 x 1410mm RH  
 1662 Powder Coated 152 x 9.5 x 1110mm LH  
 1663 Powder Coated 152 x 9.5 x 1110mm RH  
 1664 Powder Coated 152 x 9.5 x 1410mm LH  
 1665 Powder Coated 152 x 9.5 x 1410mm RH  
 1666 Powder Coated 152 x 10.0 x 1110mm LH  
 1667 Powder Coated 152 x 10.0 x 1110mm RH  
 1668 Powder Coated 152 x 10.0 x 1410mm LH  
 1669 Powder Coated 152 x 10.0 x 1410mm RH  
 1670 Powder Coated 152 x 10.5 x 1110mm LH  
 1671 Powder Coated 152 x 10.5 x 1110mm RH  
 1672 Powder Coated 152 x 10.5 x 1410mm LH  
 1673 Powder Coated 152 x 10.5 x 1410mm RH  
 1674 Powder Coated 152 x 11.0 x 1110mm LH  
 1675 Powder Coated 152 x 11.0 x 1110mm RH  
 1676 Powder Coated 152 x 11.0 x 1410mm LH  
 1677 Powder Coated 152 x 11.0 x 1410mm RH  
 1678 Powder Coated 152 x 9.0 x 910mm LH  
 1679 Powder Coated 152 x 9.0 x 910mm RH  
 1680 Powder Coated 152 x 9.0 x 1010mm LH  
 1681 Powder Coated 152 x 9.0 x 1010mm RH  
 1682 Powder Coated 152 x 9.5 x 1010mm LH  
 1683 Powder Coated 152 x 9.5 x 1010mm RH  
 1684 Powder Coated 152 x 9.5 x 1270mm LH  
 1685 Powder Coated 152 x 9.5 x 1270mm RH

VISIT OUR WEBSITE:  
[WWW.OSADOORPARTS.CO.UK](http://WWW.OSADOORPARTS.CO.UK)



**1795****INDUSTRIAL SPRING TENSIONING TOOL**

Material: Steel and Aluminium

The ISTT is applicable for 51mm, 67mm, 95mm and 152mm springs

Two plugs are supplied: one for 2" and 2 5/8" one for 3 3/4" and 6" plugs

The ISTT is to be used for 1" shafts and contains several safety aspects to ensure a safe use.

Dimensions: 1275.5 x 195.63 x 157.3mm

Unit: Piece (1)

Weight: 7kg

**1796****TENSION BARS**

Material: Steel

Diameters: 13mm & 16mm

Tool for tensioning 51mm, 67mm, 95mm and 152mm torsion springs by installer

Dimensions: 850 x 13 & 16mm

Unit: Pair (1)

Weight: 0.7kg

**1797****C-TYPE SPRING TENSIONER ADAPTOR**

Material: Cast Steel Galvanised

Diameter: 17mm Holes

Specially designed for applying tension to torsion springs fitted with "C" Type castings which normally only can be tensioned with a special ratchet. By mounting the adaptor, it is possible to tension the spring with the use of a standard tensioning bar

Dimensions: 158 x 28 x 47mm

Unit: Piece (1)

Weight: 1.2kg

**1800****TUBULAR SHAFT - 25.4MM (1") GALVANISED KEYED**

Material: Galvanised Steel

Key Way: 6.35 x 7.70 (1/4" x 3/8")

use part no. 1812 & 1813 (1/4" x 3/8") key.

Length: 3500mm

Dimensions: 25.4 x 3500mm

Unit: Piece (1)

Weight: 6.05kg

VISIT OUR WEBSITE:

[WWW.OSADOORPARTS.CO.UK](http://WWW.OSADOORPARTS.CO.UK)



**1801****TUBULAR SHAFT - 25.4MM (1") GALVANISED KEYED**

Material: Galvanised Steel  
 Key Way: 6.35 x 7.70 (1/4" x 3/8)  
 use part no. 1812 & 1813 (1/4" x 3/8") key.  
 Length: 5000mm  
 Dimensions: 25.4 x 5000mm  
 Unit: Piece (1)  
 Weight: 8.64kg

**1802****SOLID STEEL SHAFT - 25.4MM (1") GALVANISED KEYED**

Material: Galvanised Steel  
 Key Way: 6.35 x 6.35 (1/4" x 1/4")  
 use part no. 1810 & 1811 (1/4" x 1/4") key.  
 Length: 5850mm  
 Dimensions: 25.4 x 5850mm  
 Unit: Piece (1)  
 Weight: 20.9kg

**1805****SOLID STEEL SHAFT - 24.4MM (1") GALVANISED KEYED**

Material: Galvanised Steel  
 Key Way: 6.35 x 6.35 (1/4" x 1/4")  
 use part no. 1810 & 1811 (1/4" x 1/4") key.  
 Length: 4500mm  
 Dimensions: 25.4 x 4500mm  
 Unit: Piece (1)  
 Weight: 16.07kg

**1806****SOLID STEEL SHAFT - 31.75MM (1 1/4") GALVANISED KEYED**

Material: Galvanised Steel  
 Key Way: 6.35 x 6.35 (1/4" x 1/4")  
 use part no. 1810 & 1811 (1/4" x 1/4") key.  
 Length: 5850mm  
 Dimensions: 31.75 x 5850mm  
 Unit: Piece (1)  
 Weight: 37.05kg

VISIT OUR WEBSITE:  
[WWW.OSADOORPARTS.CO.UK](http://WWW.OSADOORPARTS.CO.UK)



**1809****TUBULAR SHAFT - 25.4MM (1") GALVANISED KEYED**

Material: Galvanised Steel  
 Key Way: 6.35 x 7.70 (1/4" x 3/8")  
 use part no. 1812 & 1813 (1/4" x 3/8") key.  
 Length: 6000mm  
 Dimensions: 25.4 x 6000mm  
 Unit: Piece (1)  
 Weight: 10.38kg

**1810****SQUARE KEY - BENT**

Material: Galvanised Steel  
 Bent square key to suit solid shaft  
 Dimensions: 6.35 x 6.35 x 110mm (1/4" x 1/4" x 4")  
 Unit: Piece (1)  
 Weight: 0.038kg

**1811****SQUARE KEY - STRAIGHT**

Material: Galvanised Steel  
 Straight square key to suit solid shaft  
 Dimensions: 6.35 x 6.35 x 75mm (1/4" x 1/4" x 3")  
 Unit: Piece (1)  
 Weight: 0.015kg

**1812****RECTANGULAR KEY FOR TUBULAR SHAFT - STRAIGHT**

Material: Galvanised Steel  
 Straight rectangular key to suit tubular shaft  
 Dimensions: 9.53 x 6.35 x 75mm (3/8" x 1/4" x 3")  
 Unit: Piece (1)  
 Weight: 0.035kg

VISIT OUR WEBSITE:  
[WWW.OSADOORPARTS.CO.UK](http://WWW.OSADOORPARTS.CO.UK)





**1813****RECTANGULAR KEY FOR TUBULAR SHAFT - BENT**

Material: Galvanised Steel  
 Bent rectangular key to suit tubular shaft  
 Dimensions: 9.53 x 6.35 x 75mm (3/8" x 1/4" x 3")  
 Unit: Piece (1)  
 Weight: 0.035kg

**1815****SHAFT ADAPTOR - (ROUND 35MM)**

Material: Cast Steel Galvanised  
 Adapts 25.4mm (1") diameter to 35mm shaft.  
 Includes 250mm of 25.4mm (1") Solid Round Shaft  
 and 2x Keys  
 Max Torque: Bolts 23Nm, Coupler 326Nm  
 Dimensions: 76 x 35.2 x 25.6mm  
 Unit: Piece (1)  
 Weight: 0.41kg

**1816****SHAFT ADAPTOR - (HEX 32MM)**

Material: Cast Steel Galvanised  
 Adapts 25.4mm (1") diameter to 32mm Hex shaft.  
 Includes 250mm of 25.4mm (1") Solid Round Shaft  
 and 2x Keys  
 Max Torque: Bolts 23Nm, Coupler 326Nm  
 Dimensions: 76 x 32 x 25.6mm  
 Unit: Piece (1)  
 Weight: 0.39kg

**1817****SHAFT ADAPTOR - (ROUND 31.75MM)**

Material: Cast Steel Galvanised  
 Adapts 25.4mm (1") diameter to 31.75mm shaft.  
 Includes 250mm of 25.4mm (1") Solid Round Shaft  
 and 2x Keys  
 Max Torque: Bolts 23Nm, Coupler 326Nm  
 Dimensions: 76 x 32.1 x 25.5mm  
 Unit: Piece (1)  
 Weight: 0.39kg

VISIT OUR WEBSITE:  
[WWW.OSADOORPARTS.CO.UK](http://WWW.OSADOORPARTS.CO.UK)



**1818****SHAFT ADAPTOR - (ROUND 40MM)**

Material: Cast Steel Galvanised  
 Adapts 25.4mm (1") diameter to 40mm shaft.  
 Includes 250mm of 25.4mm (1") Solid Round Shaft  
 and 2x Keys  
 Max Torque: Bolts 23Nm, Coupler 326Nm  
 Dimensions: 76 x 40.2 x 25.6mm  
 Unit: Piece (1)  
 Weight: 0.44kg

**1819****SOLID COUPLER - (100MM) 25.4MM (1")**

Material: Galvanised Steel  
 Length: 100mm with inspection hole  
 Galvanised steel for 25.4mm Shaft (1")  
 Dimensions: 100 x 40mm  
 Unit: Piece (1)  
 Weight: 0.49kg

**1822****ADJUSTABLE COUPLER - 25.4MM (1")**

Material: Cast Galvanised Steel  
 Cast steel galvanised for 25.4mm Shaft (1")  
 Coupler halves attached together with m8 bolts/nuts  
 (class 12.9, 35Nm) included  
 Dimensions: 86 x 80mm  
 Unit: Piece (1)  
 Weight: 0.73kg

**1823****ADJUSTABLE COUPLER - 31.75MM (1 1/4")**

Material: Cast Galvanised Steel  
 Cast steel galvanised for 31.75mm Shaft (1 1/4")  
 Coupler halves attached together with m8 bolts/nuts  
 (class 12.9, 35Nm) included  
 Dimensions: 96 x 80mm  
 Unit: Piece (1)  
 Weight: 1.02kg

VISIT OUR WEBSITE:  
[WWW.OSADOORPARTS.CO.UK](http://WWW.OSADOORPARTS.CO.UK)



**1826****SHAFT LOCKING COLLAR**

Material: Galvanised Steel  
 25.4mm (1") diameter  
 Dimensions: 40 x 15.5mm  
 Unit: Piece (1)  
 Weight: 0.09kg

**1827****SHAFT LOCKING COLLAR**

Material: Galvanised Steel  
 31.75mm (1 1/4") diameter  
 Dimensions: 50.8 x 17.5mm  
 Unit: Piece (1)  
 Weight: 0.16kg

**1828****REINFORCING ANGLE**

For use with 1829

**1829****REINFORCED ADJUSTABLE BRACKET FOR SFSD**

Material: Galvanised Steel  
 For use with 1834 and 1835  
 Includes nuts and bolts  
 Dimensions: 188 x 40.5 x 120mm  
 Unit: Piece (1)  
 Weight: 0.57kg

VISIT OUR WEBSITE:  
[WWW.OSADOORPARTS.CO.UK](http://WWW.OSADOORPARTS.CO.UK)



**1830****SPRING FAILURE SAFETY DEVICE - LEFT HAND**

Left Hand  
 Shaft Diameter: 25.4mm (1")  
 Material: Galvanised Steel & Cast Steel Wheel  
 For use with 67mm & 95mm diameter spring  
 Dimensions: 164 x 132 x 45mm  
 Unit: Piece (1)  
 Weight: 1.65kg

**1831****SPRING FAILURE SAFETY DEVICE - RIGHT HAND**

Right Hand  
 Shaft Diameter: 25.4mm (1")  
 Material: Galvanised Steel & Cast Steel Wheel  
 For use with 67mm & 95mm diameter spring  
 Dimensions: 164 x 132 x 45mm  
 Unit: Piece (1)  
 Weight: 1.65kg

**1832****ADJUSTABLE BRACKET FOR SFSD**

Material: Galvanised Steel  
 For use with 1830 and 1831  
 Includes nuts and bolts  
 Dimensions: 164 x 110 x 47mm  
 Unit: Piece (1)  
 Weight: 0.39kg

**1834****SPRING FAILURE SAFETY DEVICE - REINFORCED - LEFT HAND**

Left Hand  
 Shaft Diameter: 25.4mm (1")  
 Material: Galvanised Steel & Cast Steel Wheel  
 For use with 152mm diameter spring  
 Dimensions: 170 x 131 x 48.5mm  
 Unit: Piece (1)  
 Weight: 1.72kg

VISIT OUR WEBSITE:  
[WWW.OSADOORPARTS.CO.UK](http://WWW.OSADOORPARTS.CO.UK)



**1835****SPRING FAILURE SAFETY DEVICE - REINFORCED - RIGHT HAND**

Right Hand  
 Shaft Diameter: 25.4mm (1")  
 Material: Galvanised Steel & Cast Steel Wheel  
 For use with 152mm diameter spring  
 Dimensions: 170 x 131 x 48.5mm  
 Unit: Piece (1)  
 Weight: 1.72kg

**1836****ASSEMBLY BRACKET FOR SPRING BREAK DEVICES**

Assembly Bracket to be used with spring failure safety device with an offset of 190mm

**1837****SPRING BREAK SAFETY SWITCH**

Spring Break Safety Switch  
 Micro switch that is designed to stop the Electric Operator once the spring break has engaged  
 Dimensions: 50 x 20 x 350mm  
 Unit: Piece (1)  
 Weight: 0.03kg

**1849****95ID SPRING FILLER**

Length: 3000mm  
 Diameter: 70mm  
 Material: PVC  
 To suit 95ID Springs  
 Suitable for 25.4mm (1") Shaft  
 Dimensions: 70 x 3000mm  
 Unit: Piece (1)  
 Weight: 5.10kg

VISIT OUR WEBSITE:  
[WWW.OSADOORPARTS.CO.UK](http://WWW.OSADOORPARTS.CO.UK)



**1850****152ID SPRING FILLER**

Length: 3000mm  
 Diameter: 124mm  
 Material: PVC  
 To suit 152ID Springs  
 Suitable for 25.4mm (1") Shaft  
 32mm (1 1/4") Shaft available on request  
 Dimensions: 70 x 3000mm  
 Unit: Piece (1)  
 Weight: 5.10kg

**1852****SPRING FILLER FOR 1.25" (1 1/4) SHAFT**

Length: 3000mm  
 Diameter: 110mm  
 Material: PVC  
 To suit 152ID Springs  
 Suitable for 32mm (1 1/4") Shaft  
 Dimensions: 110 x 3000mm  
 Unit: Piece (1)  
 Weight: 4.5kg

**1853****END CAP FOR SPRING FILLER 1.25" (1 1/4") SHAFT**

Length: 74mm  
 Diameter: 110mm  
 Material: PVC  
 To suit 152ID Springs  
 Suitable for 32mm (1 1/4") Shaft  
 Dimensions: 110 x 74mm  
 Unit: Piece (1)  
 Weight: 0.07kg

**1900****3MM CABLE ASSEMBLIES - STEEL - 6X19 + PC**

1900/3.....2 x 3000mm long x 3mm diameter  
 1900/4.....2 x 4000mm long x 3mm diameter  
 1900/5.....2 x 5000mm long x 3mm diameter  
 1900/6.....2 x 6000mm long x 3mm diameter  
 1900/7.....2 x 7000mm long x 3mm diameter  
 1900/8.....2 x 8000mm long x 3mm diameter  
 1900/9.....2 x 9000mm long x 3mm diameter  
 1900/10.....2 x 10000mm long x 3mm diameter  
 Max Door Weight 165kgs

VISIT OUR WEBSITE:  
[WWW.OSADOORPARTS.CO.UK](http://WWW.OSADOORPARTS.CO.UK)



## 1901



### 4MM CABLE ASSEMBLIES - STEEL - 6X19 + PC

1901/3.....2 x 3000mm long x 4mm diameter  
 1901/4.....2 x 4000mm long x 4mm diameter  
 1901/5.....2 x 5000mm long x 4mm diameter  
 1901/6.....2 x 6000mm long x 4mm diameter  
 1901/7.....2 x 7000mm long x 4mm diameter  
 1901/8.....2 x 8000mm long x 4mm diameter  
 1901/9.....2 x 9000mm long x 4mm diameter  
 1901/10.....2 x 10000mm long x 4mm diameter  
 1901/11.....2 x 11000mm long x 4mm diameter  
 1901/12.....2 x 12000mm long x 4mm diameter  
 Max Door Weight 295kgs

## 1902



### 5MM CABLE ASSEMBLIES - STEEL - 6X19 + PC

1902/4.....2 x 4000mm long x 5mm diameter  
 1902/5.....2 x 5000mm long x 5mm diameter  
 1902/6.....2 x 6000mm long x 5mm diameter  
 1902/7.....2 x 7000mm long x 5mm diameter  
 1902/8.....2 x 8000mm long x 5mm diameter  
 1902/9.....2 x 9000mm long x 5mm diameter  
 1902/10.....2 x 10000mm long x 5mm diameter  
 1902/11.....2 x 11000mm long x 5mm diameter  
 1902/12.....2 x 12000mm long x 5mm diameter  
 Max Door Weight 463kgs

## 1903



### 6MM CABLE ASSEMBLIES - STEEL - 6X19 + PC

1903/5.....2 x 5000mm long x 6mm diameter  
 1903/6.....2 x 6000mm long x 6mm diameter  
 1903/7.....2 x 7000mm long x 6mm diameter  
 1903/8.....2 x 8000mm long x 6mm diameter  
 1903/9.....2 x 9000mm long x 6mm diameter  
 1903/10.....2 x 10000mm long x 6mm diameter  
 1903/11.....2 x 11000mm long x 6mm diameter  
 1903/12.....2 x 12000mm long x 6mm diameter  
 Max Door Weight 666kgs

## 1900-1903



### CABLE REELS STEEL - 6X19 + PC

6 strands, 19 wires per strand with plastic core. 152m reels

1900:..... 3mm diameter  
 1901:..... 4mm diameter  
 1902:..... 5mm diameter  
 1903:..... 6mm diameter (250m)

VISIT OUR WEBSITE:  
[WWW.OSADOORPARTS.CO.UK](http://WWW.OSADOORPARTS.CO.UK)





## 1910-1913



### EYE FOR STEEL CABLE

1910:..... 3mm  
1912:..... 4mm/5mm  
1913:..... 6mm

## 1920-1923



### CABLE COLLAR - OVAL

1920:..... 3mm  
1921:..... 4mm  
1922:..... 5mm  
1923:..... 6mm

## 1940-1943



### CABLE COLLAR - ROUND

1940:..... 3mm  
1941:..... 4mm  
1942:..... 5mm  
1943:..... 6mm

## 1944



### MOBILE SWAGER

Material: Steel  
Swager for pressing 3mm, 4mm and 5mm oval and round  
cable sleeves to steel aircraft cable  
Dimensions: 530 x 135 x 200mm  
Unit: Piece (1)  
Weight: 6.0kg

VISIT OUR WEBSITE:  
[WWW.OSADOORPARTS.CO.UK](http://WWW.OSADOORPARTS.CO.UK)



**1945**



#### STANDARD CABLE TENSION KIT

Material: Steel  
Retro Fit System  
This set keeps tension on the lift cable on electrically and chain operated doors having normal lift without pitch  
Unit: Piece (1)  
Weight: 2.9kg

**1946**



#### CABLE TENSION KIT - STEEL ARM

Material: Galvanised Steel  
This set keep tension on the lift cable on electrically and chain operated doors having normal lift without pitch. The horizontal track must be lengthened on one side by approx 500mm. Not suitable in combination with cable drum 1003.  
Unit: Piece (1)  
Weight: 1.69kg

**1947**



#### CABLE TENSION KIT - STEEL ARM LOW HEADROOM SYSTEM

Material: Galvanised Steel  
This set keeps tension on the lift cable on electrically and chain operated doors having low lift without pitch  
Unit: Piece (1)  
Weight 2.9kg

VISIT OUR WEBSITE:  
[WWW.OSADOORPARTS.CO.UK](http://WWW.OSADOORPARTS.CO.UK)



## 2400-2411



### VERTICAL TRACK - BOLTED TRACK SYSTEM

Material: Galvanised Steel

Thickness: 2mm

Galvanised to suit Vertical Track Angle 2415 - 2425

Dimensions: 54 x 27 x (x) mm

Unit: Piece (1)

Weight: See above (1.34kg/Lin. metre approx.)

2400: 1490mm - 2.00kg

2401: 1990mm - 2.70kg

2402: 2490mm - 3.40kg

2403: 2990mm - 4.10kg

2404: 3490mm - 4.80kg

2405: 3990mm - 5.50kg

2406: 4490mm - 6.10kg

2407: 4990mm - 6.80kg

2408: 5490mm - 7.50kg

2409: 5990mm - 8.20kg

2410: 6490mm - 8.80kg

2411: 6990mm - 9.50kg

## 2415-2425



### VERTICAL TRACK ANGLE - BOLTED TRACK SYSTEM

Material: Galvanised Steel

Thickness: 2mm

Galvanised to suit Vertical Track 2400 - 2411

Dimensions: 90 x 70 x (x) mm

Unit: Piece (1)

Weight: See above (2.44kg/Lin Metre approx.)

2415: 2380mm long - 5.8kg

2416: 2880mm long - 7.0kg

2417: 3380mm long - 8.2kg

2418: 3880mm long - 9.4kg

2419: 4380mm long - 10.6kg

2420: 4880mm long - 11.8kg

2421: 5380mm long - 13.1kg

2422: 5880mm long - 14.3kg

2423: 6380mm long - 15.5kg

2424: 6880mm long - 16.7kg

2425: 7380mm long - 17.9kg

VISIT OUR WEBSITE:

[WWW.OSADOORPARTS.CO.UK](http://WWW.OSADOORPARTS.CO.UK)



## 2429-2436



### HORIZONTAL TRACK BEND - BOLTED TRACK SYSTEM

Material: Galvanised Steel

Thickness: 2mm

2429: Horizontal Track Bend 1005mm - 0° Pitch - 3.6kg

2430: Horizontal Track Bend 968mm - 5° Pitch - 3.6kg

2431: Horizontal Track Bend 928mm - 10° Pitch - 3.2kg

2432: Horizontal Track Bend 884mm - 15° Pitch - 3.2kg

2433: Horizontal Track Bend 837mm - 20° Pitch - 3.0kg

2434: Horizontal Track Bend 787mm - 25° Pitch - 3.0kg

2435: Horizontal Track Bend 734mm - 30° Pitch - 3.0kg

2436: Horizontal Track Bend 679mm - 35° Pitch - 2.8kg

## 2437-2448



### HORIZONTAL "C" CHANNEL - BOLTED TRACK SYSTEM

MATERIAL: Galvanised Steel

THICKNESS: 2mm

Galvanised 'C' Channel for mounting fixing additional components to horizontal back tracks for use with 2429 - 2436

Dimensions: 53 x 20 x (x) mm

Unit: Piece (1)

Weight: See above (1.36kg/Lin Metre approx.)

2437: Horizontal 'C' Channel - 2210mm - 3.0kg

2438: Horizontal 'C' Channel - 2710mm - 3.7kg

2439: Horizontal 'C' Channel - 3200mm - 4.3kg

2440: Horizontal 'C' Channel - 3700mm - 5.0kg

2441: Horizontal 'C' Channel - 4200mm - 5.7kg

2442: Horizontal 'C' Channel - 4700mm - 6.4kg

2443: Horizontal 'C' Channel - 5200mm - 7.0kg

2444: Horizontal 'C' Channel - 5700mm - 7.7kg

2445: Horizontal 'C' Channel - 6200mm - 8.4kg

2446: Horizontal 'C' Channel - 6700mm - 9.1kg

2447: Horizontal 'C' Channel - 7200mm - 9.7kg

2448: Horizontal 'C' Channel - 7700mm - 10.4kg

## 2452-2457



### SIDE SEAL - BOLTED TRACK SYSTEM

Material: Hard PVC, Flexible TPE

Thickness: 2mm

For Vertical Angle 2415-2425

Dimensions: 21 x 12 x (x)mm

2452: Side Seal - 2510mm - 0.2kg

2453: Side Seal - 3150mm - 0.3kg

2454: Side Seal - 3660mm - 0.4kg

2455: Side Seal - 4260mm - 0.5kg

2456: Side Seal - 5060mm - 0.6kg

2457: Side Seal - 6000mm - 0.7kg

VISIT OUR WEBSITE:  
WWW.OSADOORPARTS.CO.UK



## 2458-2473



### TRACK CONNECTING PROFILES - BOLTED TRACK SYSTEM

**MATERIAL:** Galvanised Steel

**THICKNESS:** 2mm

To be used with 2400 - 2411 Vertical Track &

2415 - 2425 Vertical Angle

**Dimensions:** 53 x 20 x (x) mm

**Unit:** Piece (1)

**Weight:** Individual see above

2458: Connection Profile - 140mm - 0.19kg

2459: Connection Profile - 170mm - 0.23kg

2460: Connection Profile - 210mm - 0.27kg

2461: Connection Profile - 240mm - 0.33kg

2462: Connection Profile - 270mm - 0.37kg

2463: Connection Profile - 300mm - 0.41kg

2464: Connection Profile - 330mm - 0.45kg

2465: Connection Profile - 360mm - 0.49kg

2466: Connection Profile - 390mm - 0.53kg

2467: Connection Profile - 420mm - 0.57kg

2468: Connection Profile - 450mm - 0.61kg

2469: Connection Profile - 480mm - 0.66kg

2470: Connection Profile - 510mm - 0.70kg

2471: Connection Profile - 540mm - 0.74kg

2472: Connection Profile - 570mm - 0.78kg

2473: Connection Profile - 600mm - 0.82kg

## 2474



### FILLER PLATE UNIVERSAL - BOLTED TRACK SYSTEM

**MATERIAL:** Galvanised Steel

**THICKNESS:** 2mm

2474: Filler Plate Universal

**Dimensions:** 180 x 48 x 16 mm

**Unit:** Piece (1)

**Weight:** 0.13kg

## 2475



### TRACK PLATE 90X60X2 (40MM) - BOLTED TRACK SYSTEM

**MATERIAL:** Galvanised Steel

**THICKNESS:** 2mm

2475: Track Plate 90x60x2 (40mm)

**Dimensions:** 90 x 69 x 4 mm

**Unit:** Piece (1)

**Weight:** 0.08kg

VISIT OUR WEBSITE:

[WWW.OSADOORPARTS.CO.UK](http://WWW.OSADOORPARTS.CO.UK)



**2476****ALUMINIUM TRACK CONNECTOR UNIVERSAL - BOLTED TRACK SYSTEM**

MATERIAL: Aluminium  
 THICKNESS: 4mm  
 2476: Aluminium Track Connector Universal  
 Dimensions: 60 x 55 x 30 mm  
 Unit: Piece (1)  
 Weight: 0.05kg

**2477****CONNECTION FOR "C" PLATE - BOLTED TRACK SYSTEM**

MATERIAL: Galvanised Steel  
 THICKNESS: 3mm  
 2477: Connection for 'C' Plate  
 Dimensions: 60 x 50 x 17 mm  
 Unit: Piece (1)  
 Weight: 0.10kg

**2478****CONNECTION PLATE FOR PITCHED TRACKS - BOLTED TRACK SYSTEM**

MATERIAL: Galvanised Steel  
 THICKNESS: 2mm  
 2478: Connection Plate for Pitched Tracks  
 Dimensions: 140 x 68 x 8 mm  
 Unit: Piece (1)  
 Weight: 0.38kg

**2479****TRACK PLATE FOR VERTICAL ANGLE & "C" CHANNEL - BOLTED TRACK SYSTEM**

MATERIAL: Galvanised Steel  
 THICKNESS: 2mm  
 2479: Track Plate for Vertical Angle and 'C' Channel  
 To suit 2415 - 2425 & 2437 - 2448  
 Dimensions: 110 x 100 mm  
 Unit: Piece (1)  
 Weight: 0.19kg

VISIT OUR WEBSITE:  
[WWW.OSADOORPARTS.CO.UK](http://WWW.OSADOORPARTS.CO.UK)



**2480****TRACK PLATE FOR HIGH LIFT (40MM) - BOLTED TRACK SYSTEM**

MATERIAL: Galvanised Steel  
 THICKNESS: 2mm  
 2480: Track Plate for High Lift Doors (40mm)  
 Dimensions: 148 x 90 x 7 mm  
 Unit: Piece (1)  
 Weight: 0.21kg

**2481****TRACK PLATE FOR HIGH LIFT (80MM) - BOLTED TRACK SYSTEM**

MATERIAL: Galvanised Steel  
 THICKNESS: 2mm  
 2481: Track Plate for High Lift Doors (80mm)  
 Dimensions: 187 x 90 x 7 mm  
 Unit: Piece (1)  
 Weight: 0.26kg

**2483****2482****CONNECTION PLATE HIGH LIFT - BOLTED TRACK SYSTEM**

MATERIAL: Galvanised Steel  
 THICKNESS: 2mm  
 2482: Connection Plate for High Lift Arrangement  
 Dimensions: 150 x 105 mm  
 Unit: Piece (1)  
 Weight: 0.15kg

**2483****SHIM - BOLTED TRACK SYSTEM**

MATERIAL: Galvanised Steel  
 THICKNESS: 2mm  
 2483: Shim (Spacer)  
 Dimensions: 51 x 36 x 14 mm  
 Unit: Piece (1)  
 Weight: 0.03kg

VISIT OUR WEBSITE:  
[WWW.OSADOORPARTS.CO.UK](http://WWW.OSADOORPARTS.CO.UK)





**2484****CORNER BRACKET 60 X 60 - BOLTED TRACK SYSTEM**

MATERIAL: Galvanised Steel  
 THICKNESS: 2mm  
 2484: Corner Bracket 60 x 60  
 Dimensions: 60 x 60 x 50 mm  
 Unit: Piece (1)  
 Weight: 0.08kg

**2485****TRACK CONNECTION PLATE (40MM) - BOLTED TRACK SYSTEM**

MATERIAL: Galvanised Steel  
 THICKNESS: 2mm  
 2485: Track Connection Plate (40mm)  
 Dimensions: 160 x 105 x 7 mm  
 Unit: Piece (1)  
 Weight: 0.22kg

**2486****TRACK CONNECTION PLATE (80MM) - BOLTED TRACK SYSTEM**

MATERIAL: Galvanised Steel  
 THICKNESS: 2mm  
 2486: Track Connection Plate (80mm)  
 Dimensions: 160 x 155 x 7mm  
 Unit: Piece (1)  
 Weight: 0.36kg

**2487****M8 CARRIAGE BOLT - BOLTED TRACK SYSTEM**

MATERIAL: Galvanised Steel  
 2487: M8 x 12 Bolt Flathead  
 Dimensions: M8 x 12 mm  
 Unit: Pieces (100)  
 Weight: 0.7kg / 100

VISIT OUR WEBSITE:  
[WWW.OSADOORPARTS.CO.UK](http://WWW.OSADOORPARTS.CO.UK)



**2488**



**M8 CARRIAGE NUT - BOLTED TRACK SYSTEM**

MATERIAL: Galvanised Steel

2488: M8 x 6.5 Flange Nut

Dimensions: M8 x 6.5 mm

Unit: Pieces (10)

Weight: 0.06kg / 10

**2489**



**TRACK PLATE 90 X 128 X 2 (80MM) - BOLTED TRACK SYSTEM**

MATERIAL: Galvanised Steel

THICKNESS: 2mm

2489: Track Plate 90 x 128 x 2 (80mm)

Dimensions: 128 x 90 x 7 mm

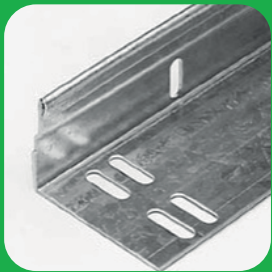
Unit: Piece (1)

Weight: 0.13kg

VISIT OUR WEBSITE:

[WWW.OSADOORPARTS.CO.UK](http://WWW.OSADOORPARTS.CO.UK)



**2060****VERTICAL TRACK ANGLE - WELDED SYSTEM**

MATERIAL: Galvanised Steel  
 THICKNESS: 2mm  
 2060/6.5: 6500mm long - 15.9kg  
 Galvanised to suit Vertical Track 2260-2"  
 Dimensions: 90 x 62 x (x)mm  
 Unit: Piece (1)  
 Weight: See above (2.45kg/Lin Metre approx.)

**2114****TRACK CONNECTING PLATE-WELDED SYSTEM**

MATERIAL: Galvanised Steel  
 THICKNESS: 2mm  
 2114B: 35mm x 120mm offset - 0.12kg  
 2114C: 13mm x 120mm offset - 0.12kg  
 For use with 2060 Vertical Angle and 2260 Vertical Track  
 Dimensions: 120 x 65 x 25 mm  
 Unit: Piece (1)  
 Weight: Individual see above

**2116B****TRACK CONNECTING PLATE-WELDED SYSTEM**

MATERIAL: Galvanised Steel  
 THICKNESS: 2mm  
 2116B: 35mm x 200mm offset  
 For use with 2060 Vertical Angle and 2260 Vertical Track  
 Dimensions: 200 x 60 x 25 mm  
 Unit: Piece (1)  
 Weight: 0.19kg

**2260****VERTICAL TRACK (2")-WELDED SYSTEM**

MATERIAL: Galvanised Steel  
 THICKNESS: 2mm  
 2260/6: 2" x 6000mm - 9.00kg  
 Galvanised to suit Vertical Track Angle 2060  
 Dimensions: 54 x 27 x (x) mm  
 Unit: Piece (1)  
 Weight: See above (1.50kg/Lin Metre approx.)

VISIT OUR WEBSITE:  
[WWW.OSADOORPARTS.CO.UK](http://WWW.OSADOORPARTS.CO.UK)



**2505****SIDE SEAL-WELDED SYSTEM**

MATERIAL: Hard PVC, Flexible TPE  
 THICKNESS: 2mm  
 2505/6: 6000mm long - 1.2kg  
 For Vertical Angle 2060  
 Dimensions: 44 x 19.5 x (x) mm  
 Unit: Piece (1)  
 Weight: (0.20kg/Lin Metre approx.)

**2508****SIDE SEAL EXTENDED-WELDED SYSTEM**

MATERIAL: Hard PVC, Flexible TPE  
 THICKNESS: 2mm  
 2508: 6000mm long  
 For use with Vertical Angle 2060  
 75mm Offset  
 Dimensions: 44 x 40 x 6000 mm  
 Unit: Piece (1)  
 Weight: 1.2kg

**2519/C****HORIZONTAL "C" CHANNEL-WELDED SYSTEM**

MATERIAL: Galvanised Steel  
 THICKNESS: 2mm  
 2519/C: 53 x 18 x 12 x 6500mm  
 Galvanised to suit Horizontal Track 2306 and 2381  
 Dimensions: 53.5 x 18.5 x 12 x 6500 mm  
 Unit: Piece (1)  
 Weight: 9.70kg

**2611****M6 TRACK BOLT - WELDED SYSTEM**

MATERIAL: Galvanised Steel  
 2611: M6 x 16 Bolt  
 For use with 2" and 3" tracks  
 Dimensions: M6 x 16 mm  
 Unit: Pieces (100)  
 Weight: 0.4kg / 100

VISIT OUR WEBSITE:  
[WWW.OSADOORPARTS.CO.UK](http://WWW.OSADOORPARTS.CO.UK)



**2612**

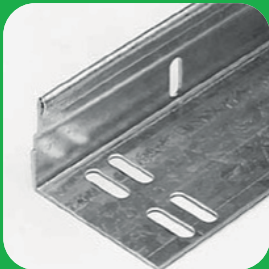
**M6 TRACK NUT - WELDED SYSTEM**



MATERIAL: Galvanised Steel  
2612: M6 Serrated Flange Nut  
For use with 2" and 3" tracks  
Dimensions: M6 x 6.5 mm  
Unit: Pieces (100)  
Weight: 0.3kg / 100

VISIT OUR WEBSITE:  
[WWW.OSADOORPARTS.CO.UK](http://WWW.OSADOORPARTS.CO.UK)



**2061****VERTICAL TRACK ANGLE (3")**

MATERIAL: Galvanised Steel  
 THICKNESS: 2mm  
 2061/6.5: 6500mm long - 17.6kg  
 Galvanised to suit Vertical Track 2260-3"  
 Dimensions: 90 x 85 x (x)mm  
 Unit: Piece (1)  
 Weight: See above (2.71kg/Lin Metre approx.)

**2252****VERTICAL TRACK (3")**

MATERIAL: Galvanised Steel  
 THICKNESS: 3mm  
 2252: 2.5 x 5180mm  
 Galvanised to suit Vertical Track Angle 2061  
 Dimensions: 81 x 35 x 5180 mm  
 Unit: Pair (2)  
 Weight: 31.80kg / pair

**2352****HORIZONTAL TRACK (3") - 380MM (15") RADIUS**

MATERIAL: Galvanised Steel  
 THICKNESS: 2mm  
 2352: 3" x 4181mm x 380R  
 Galvanised 381mm (15") radius  
 Dimensions: 81 x 35 x 4181 mm  
 Unit: Pair (2)  
 Weight: 14.00kg / pair

**2515****HORIZONTAL TRACK ANGLE (3")**

MATERIAL: Galvanised Steel  
 THICKNESS: 3mm  
 2515: 50 x 50 x 5000mm  
 Galvanised for Horizontal Track 2352 - 3"  
 Dimensions: 50 x 50 x 5000 mm  
 Unit: Piece (1)  
 Weight: 11.0kg

VISIT OUR WEBSITE:  
[WWW.OSADOORPARTS.CO.UK](http://WWW.OSADOORPARTS.CO.UK)



**1840****SPRING BUMPER - 220MM**

MATERIAL: Galvanised steel and Rubber stop  
 Supplied with fixings  
 Excluding mounting angle  
 Dimensions: 235 x 100 x 50 mm  
 Unit: Piece (1)  
 Weight: 0.49kg

**1844****SPRING BUMPER - 670MM**

MATERIAL: Galvanised steel and Rubber stop  
 Supplied with fixings  
 Excluding mounting angle  
 Dimensions: 670 x 100 x 50 mm  
 Unit: Piece (1)  
 Weight: 0.95kg

**1845****MOUNTING ANGLE FOR SPRING BUMPER**

MATERIAL: Galvanised Steel  
 THICKNESS: 4mm  
 For use with 1840 and 1844  
 Includes nuts and bolts  
 Dimensions: 110 x 110 x 90 mm  
 Unit: Piece (1)  
 Weight: 0.56kg

**1846****LOW HEADROOM FIXING ANGLE FOR SPRING BUMPER**

MATERIAL: Galvanised Steel  
 THICKNESS: 4mm  
 For use with 1840 and 1844  
 Includes nuts and bolts  
 Dimensions: 110 x 110 x 90 mm  
 Unit: Piece (1)  
 Weight: 0.56kg

VISIT OUR WEBSITE:  
[WWW.OSADOORPARTS.CO.UK](http://WWW.OSADOORPARTS.CO.UK)



**2375****HORIZONTAL TRACK JUNCTION PLATE LOW HEADROOM**

MATERIAL: Galvanised Steel  
 THICKNESS: 2mm  
 Galvanised for low headroom door  
 Dimensions: 80 x 60 x 2 mm  
 Unit: Piece (1)  
 Weight: 0.9kg

**2531****INSTALLATION PUNCHED ANGLE**

MATERIAL: Galvanised Steel  
 THICKNESS: 2.5mm  
 40 x 40 x 2.5 x 3000mm  
 Galvanised  
 Dimensions: 40 x 40 x 3000 mm  
 Unit: Piece (1)  
 Weight: 3.96kg

**2550****5" CAST IRON SLEEVE**

MATERIAL: Cast Iron  
 MAX LOAD: 300kg per Sheave  
 MAX CABLE DIA: 6mm  
 140mm Cast steel pulley, complete with bolt, nut lock  
 and two washers  
 Dimensions: 140 x 19 mm  
 Unit: Piece (1)  
 Weight: 1.15kg

**2551****SHEAVE SADDLE SUPORT**

MATERIAL: Galvanised Steel  
 THICKNESS: 3mm  
 Galvanised for use with 2550 Sheave including fixing bolts  
 Dimensions: 260 x 50 x 33 mm  
 Unit: Piece (1)  
 Weight: 0.34kg



**2554****SHEAVE**

MATERIAL: Galvanised Steel  
 BORE DIAMETER: 10mm  
 MAX. LOAD: 90kg / pair  
 MAX CABLE DIA: 3mm  
 Galvanised steel with bearings for use with 2551 Saddle Support  
 Dimensions: 88 x 8.8 mm  
 Unit: Piece (1)  
 Weight: 0.13kg

**2602****M8 WASHER**

MATERIAL: Galvanised Steel  
 M8 Washer  
 Inside diameter: 8.4mm  
 Outside diameter: 15mm  
 Dimensions: M8  
 Unit: Pieces (100)  
 Weight: 0.22kg / 100

**2610****3/8" X 1 1/4" BOLT**

MATERIAL: Galvanised Steel  
 3/8" x 1 1/4"  
 For use with Spring Castings - UNC Thread  
 Dimensions: 9.525 x 31.75 mm  
 Unit: Pieces (100)  
 Weight: 2.2kg / 100

**2620****M6 CARRIAGE BOLT**

MATERIAL: Galvanised Steel  
 M6 x 16 Carriage Bolt  
 Dimensions: M6 x 16 mm  
 Unit: Pieces (100)  
 Weight: 0.5kg / 100

VISIT OUR WEBSITE:  
[WWW.OSADOORPARTS.CO.UK](http://WWW.OSADOORPARTS.CO.UK)



**2624****3/8" NUT**

MATERIAL: Galvanised Steel  
 3/8" Nut - UNC Thread  
 For use with Spring Castings  
 Dimensions: 3/8" x 6.3575 mm  
 Unit: Pieces (100)  
 Weight: 0.30kg / 100

**2630****PANEL FIXINGS**

MATERIAL: Galvanised Steel  
 Galvanised Self Tapping Fastener  
 6.3 x 25mm H x HD  
 Dimensions: 6.3 x 25 x 14 mm  
 Unit: Pieces (100)  
 Weight: 0.8kg / 100

**2631****PANEL FIXINGS**

MATERIAL: Galvanised Steel  
 Galvanised Self Tapping Fastener for Panoramic Doors  
 6.3 x 11mm H x HD  
 Dimensions: 6.3 x 11 x 14 mm  
 Unit: Pieces (100)  
 Weight: 0.6kg / 100

**2632****M10 X 25MM BOLT**

MATERIAL: Galvanised Steel  
 M10 x 25mm Bolt  
 Dimensions: M10 x 25 mm  
 Unit: Pieces (100)  
 Weight: 2.5kg / 100

**2633****M10 FLANGE NUT**

MATERIAL: Galvanised Steel  
M10 Flange Nut  
Dimensions: M10 x 6 mm  
Unit: Pieces (100)  
Weight: 1.2kg / 100

**2638****M8 X 35MM BOLT**

MATERIAL: Galvanised Steel  
For Steelwork Fixing  
Dimensions: M8 x 35 mm  
Unit: Pieces (100)  
Weight: 1.6kg / 100

**2640****3MM CABLE CLAMP**

MATERIAL: Galvanised Steel  
3mm  
Dimensions: 21 x 20 x 10 mm  
Unit: Pieces (10)  
Weight: 0.08kg / 10

**2641****4/5MM CABLE CLAMP**

MATERIAL: Galvanised Steel  
4/5mm  
Dimensions: 23 x 24 x 11 mm  
Unit: Pieces (10)  
Weight: 0.13kg / 10

VISIT OUR WEBSITE:  
[WWW.OSADOORPARTS.CO.UK](http://WWW.OSADOORPARTS.CO.UK)



**2642**



#### PARO CLAMP PLATE

MATERIAL: Galvanised Steel  
Single Paro Clamp Plate  
M8 x 20mm Bolt installed  
For use with Horizontal 'C' Channel 2516  
Including M8 Nut  
Dimensions: 53 x 25 x 25 mm  
Unit: Piece (1)  
Weight: 0.05kg

**2643**



#### DOUBLE PARO CLAMP PLATE

MATERIAL: Galvanised Steel  
Double Paro Clamp Plate  
2no M8 x 20mm Bolts installed  
For use with Horizontal 'C' Channel 2516  
Including M8 Nuts  
Dimensions: 113 x 43 x 25 mm  
Unit: Piece (1)  
Weight: 0.15kg

**2645**



#### M8 FLANGE NUT

MATERIAL: Galvanised Steel  
M8 Flange Nut  
For use with Paro Clamps  
Dimensions: M8 x 6 mm  
Unit: Pieces (10)  
Weight: 0.07kg / 10

**2646**



#### M10 X 50MM BOLT

MATERIAL: Galvanised Steel  
For Steelwork Fixing  
Dimensions: M10 x 50 mm  
Unit: Pieces (10)  
Weight: 3.5kg / 10

VISIT OUR WEBSITE:  
[WWW.OSADOORPARTS.CO.UK](http://WWW.OSADOORPARTS.CO.UK)



**2647**

**M10 WASHER**



MATERIAL: Galvanised Steel  
For Steelwork Fixing  
Dimension: M10  
Unit: Pieces (10)  
Weight: 0.02kg / 10

VISIT OUR WEBSITE:  
[WWW.OSADOORPARTS.CO.UK](http://WWW.OSADOORPARTS.CO.UK)



**3000****ROLLER NYLON- SHORT STEM**

MATERIAL: Galvanised Steel, Nylon  
 SHAFT LENGTH: 95mm  
 TOTAL LENGTH: 119mm  
 TOTAL LOAD CAPACITY: 35kg  
 46.5 x 95 x 11 Shaft (2" x 4") with 11 Ball Bearings  
 Dimensions: 119 x 46.5 x 11 mm  
 Unit: Piece (1)  
 Weight: 0.16kg

**3001****ROLLER NYLON- LONG STEM**

MATERIAL: Galvanised Steel, Nylon  
 SHAFT LENGTH: 165mm  
 TOTAL LENGTH: 193mm  
 TOTAL LOAD CAPACITY: 50kg  
 46.5 x 170 x 11 Shaft (2" x 7 ") with 11 Ball Bearings  
 Dimensions: 193 x 46.5 x 11 mm  
 Unit: Piece (1)  
 Weight: 0.21kg

**3008****ROLLER NYLON (3")**

MATERIAL: Galvanised Steel, Nylon  
 SHAFT LENGTH: 165mm  
 TOTAL LENGTH: 190mm  
 TOTAL LOAD CAPACITY: 150kg  
 To suit 2252 - 3" Track  
 Dimensions: 170 x 72 x 11 mm  
 Unit: Piece (1)  
 Weight: 0.24kg

**3010****TANDEM ROLLER NYLON**

MATERIAL: Galvanised Steel, Nylon  
 SHAFT LENGTH: 131mm  
 TOTAL LOAD CAPACITY: 50kgs  
 2x 2" Rollers with 11 Ball Bearings each  
 Dimensions: 135 x 81 x 131 mm  
 Unit: Piece (1)  
 Weight: 0.55kg

VISIT OUR WEBSITE:  
[WWW.OSADOORPARTS.CO.UK](http://WWW.OSADOORPARTS.CO.UK)



**3011****SINGLE SIDE HINGE TO SUIT TANDEM ROLLER**

MATERIAL: Galvanised Steel  
 THICKNESS: 2.5mm  
 2.5mm Galvanised Steel - Fixed Pin - for 11mm Tandem Rollers  
 Dimensions: 70 x 87.5 x 2.5 mm  
 Unit: Piece (1)  
 Weight: 0.17kg

**3020****ROLLER PROTECTOR - 2"**

MATERIAL: Black Plastic  
 To suit up to 14.5mm Shaft  
 Protection to prevent fingers to be crushed by the roller in the track  
 Dimensions: 63 x 44 x 20 mm  
 Unit: Piece (1)  
 Weight: 0.01kg

**3050****5MM SPACERS FOR ROLLERS**

MATERIAL: Galvanised Steel  
 DIAMETER: 11 x 5mm  
 Outside diameter 17mm  
 Dimensions: 11 x 5 mm  
 Unit: Piece (1)  
 Weight: 0.01kg

**3052****10MM SPACERS FOR ROLLERS**

MATERIAL: Galvanised Steel  
 DIAMETER: 11 x 10mm  
 Outside diameter 17mm  
 Dimensions: 11 x 10 mm  
 Unit: Piece (1)  
 Weight: 0.01kg

VISIT OUR WEBSITE:  
[WWW.OSADOORPARTS.CO.UK](http://WWW.OSADOORPARTS.CO.UK)



**3100****SINGLE ADJUSTABLE SIDE HINGE & ROLLER CARRIER**

MATERIAL: Galvanised Steel  
 THICKNESS: 2.5mm  
 2.5mm Galvanised Steel - Fixed Pin - for 11mm Rollers  
 Dimensions: 140 x 65 x 71 mm  
 Unit: Piece (1)  
 Weight: 0.45kg

**3101****INTERMEDIATE HINGE**

MATERIAL: Galvanised Steel  
 THICKNESS: 2.5mm  
 2.5mm Galvanised Steel - Fixed Pin  
 Dimensions: 65 x 65 x 2.5 mm  
 Unit: Piece (1)  
 Weight: 0.12kg

**3102****INTERMEDIATE HINGE - 70MM FINGERSAFE**

MATERIAL: Galvanised Steel  
 THICKNESS: 2.5mm  
 2.5mm Finger Safe Galvanised Steel - Fixed Pin  
 Dimensions: 75 x 65 x 2.5 mm  
 Unit: Piece (1)  
 Weight: 0.12kg

**3103****SINGLE ADJUSTABLE SIDE HINGE & ROLLER CARRIER - 70MM FINGERSAFE**

MATERIAL: Galvanised Steel  
 THICKNESS: 2.5mm  
 Finger safe Side Hinge  
 2.5mm Galvanised Steel - Fixed Pin - for 11mm Rollers  
 Dimensions: 165 x 65 x 71 mm  
 Unit: Piece (1)  
 Weight: 0.45kg

VISIT OUR WEBSITE:  
[WWW.OSADOORPARTS.CO.UK](http://WWW.OSADOORPARTS.CO.UK)





**3104****DOUBLE ADJUSTABLE SIDE HINGE & ROLLER CARRIER**

MATERIAL: Galvanised Steel  
 THICKNESS: 2.5mm  
 2.5mm Galvanised Steel - Fixed Pin - for 11mm Rollers  
 Double Roller Carrier  
 Dimensions: 165 x 135 x 71 mm  
 Unit: Piece (1)  
 Weight: 1.10kg

**3105****SIDE HINGE & CARRIER STAINLESS STEEL**

MATERIAL: Stainless Steel  
 THICKNESS: 2.5mm  
 2.5mm Stainless Steel-fixed for 11mm Rollers  
 Dimensions: 140 x 65 x 71 mm  
 Unit: Piece (1)  
 Weight: 0.45kg

**3106****INTERMEDIATE HINGE STAINLESS STEEL**

MATERIAL: Stainless Steel  
 THICKNESS: 2.5mm  
 2.5mm Stainless Steel - Fixed Pin  
 Dimensions: 65 x 65 x 2.5mm  
 Unit: Piece (1)  
 Weight: 0.12kg

**3107****ROLLER NYLON 2" X 4" STAINLESS STEEL**

MATERIAL: Stainless Steel/Nylon  
 Shaft Length: 95mm  
 Total Length: 119mm  
 Total Load Capacity: 35kgs  
 Dimensions: 119 x 46.5 x 11mm  
 Unit: Piece (1)  
 Weight: 0.16kg

VISIT OUR WEBSITE:  
[WWW.OSADOORPARTS.CO.UK](http://WWW.OSADOORPARTS.CO.UK)



**3108****ROLLER NYLON 2" X 7" STAINLESS STEEL**

MATERIAL: Stainless Steel/Nylon  
 Shaft Length: 165mm  
 Total Length: 193mm  
 Total Load Capacity: 60kgs  
 Dimensions: 193 x 46.5 x 11 mm  
 Unit: Piece (1)  
 Weight: 0.45kg

**3120****ADJUSTABLE TOP ROLLER CARRIER**

MATERIAL: Galvanised Steel  
 THICKNESS: 2mm  
 2.5mm Galvanised Steel for 11mm Rollers  
 Dimensions: 136 x 70 x 74 mm  
 Unit: Piece (1)  
 Weight: 0.45kg

**3125****TOP ROLLER CARRIER - LOW HEADROOM**

MATERIAL: Galvanised Steel  
 THICKNESS: 2mm  
 For low headroom doors  
 Suitable for 11mm Rollers  
 Dimensions: 135.5 x 70 x 2 mm  
 Unit: Piece (1)  
 Weight: 0.2kg

**3202****NON-ADJUSTABLE BOTTOM CORNER BRACKET 95-3**

MATERIAL: Galvanised Steel  
 THICKNESS: 3mm  
 MAX. DOOR WEIGHT: 500kg  
 MAX CABLE DIAMETER: 5mm  
 TRACK: To suit 2"  
 3mm Galvanised Steel for 11mm Rollers  
 Dimensions: 198 x 79 x 45 mm  
 Unit: Pair (2)  
 Weight: 1.2kg

VISIT OUR WEBSITE:  
[WWW.OSADOORPARTS.CO.UK](http://WWW.OSADOORPARTS.CO.UK)



**3205****BOTTOM CORNER BRACKET - UNIVERSAL**

MATERIAL: Aluminium & Galvanised Steel Bolts  
 THICKNESS: 4mm  
 MAX. DOOR WEIGHT: 735kg  
 MAX. CABLE DIAMETER: 6mm  
 TRACK: To suit 2"  
 Aluminium with adjustable cable fixing  
 Suitable for 11mm Rollers  
 Supplied with Galvanised Steel adjusting eye bolts  
 Dimension: 201 x 81 x 74 mm  
 Unit: Pair (2)  
 Weight: 1.2kg

**3206****EYEBOLT - SUITS 3205 BOTTOM CORNER BRACKET**

MATERIAL: Galvanised Steel  
 DIAMETER: 9mm  
 Eyebolt to suit 3205 Bottom Corner Brackets  
 Dimensions: 130 x 50 x 9 mm  
 Unit: Piece (1)

**3207****BOTTOM CORNER BRACKETS TO SUIT LOW HEADROOM DOORS**

MATERIAL: Galvanised Steel  
 THICKNESS: 4mm  
 MAX. DOOR WEIGHT: 400kg  
 MAX. CABLE DIAMETER: 6mm  
 TRACK: To suit 2"  
 Bottom Corner Brackets to suit Low Headroom Doors 2" Track -  
 Cables fitted outside Tracks  
 Dimensions: 211 x 143 x 72 mm  
 Unit: Pair (2)  
 Weight: 2.4kg

**3218****2" NON-ADJUSTABLE - SAFETY BOTTOM CORNER BRACKET**

MATERIAL: Galvanised Steel  
 THICKNESS: 3mm  
 MAX. DOOR WEIGHT: 750kg  
 MAX. CABLE DIAMETER: 6mm  
 TRACK: To suit 2"  
 Safety Bottom Corner Bracket for 11mm Rollers  
 Non-adjustable cable fixing  
 Approved by TUV/BG under No. 94072  
 Dimensions: 143 x 128 x 90 mm  
 Unit: Pair (2)  
 Weight: 2.7kg

VISIT OUR WEBSITE:  
[WWW.OSADOORPARTS.CO.UK](http://WWW.OSADOORPARTS.CO.UK)



**3219****ANTI-LIFT BRACKETS FOR 3218 & 3223**

**MATERIAL:** Galvanised Steel  
**THICKNESS:** 4mm  
 Anti-Lift Brackets to suit 3218 and 3223 Cable Breaks  
 This anti-lift bracket will prevent outside lifting of the door by burglars.  
 When cable is slack the 440LOCK will lock the door  
**Dimensions:** 114 x 51 x 4 & 121 x 60 x 21 mm  
**Unit:** Pair (2)  
**Weight:** 0.8kg

**3220****2" NON-ADJUSTABLE - SAFETY BOTTOM CORNER BRACKET**

**MATERIAL:** Galvanised Steel  
**THICKNESS:** 3mm  
**MAX. DOOR WEIGHT:** 750kg  
**MAX. CABLE DIAMETER:** 6mm  
**TRACK:** To suit 2"  
 Safety Bottom Corner Bracket for 11mm Rollers  
 Non-adjustable cable fixing  
 Approved by TUV/BG under No. 94072  
 3220 to suit 2" Tracks  
**Dimensions:** 210 x 91 x 75 mm  
**Unit:** Pair (2)  
**Weight:** 3.8kg

**3221****LOW HEADROOM - CABLE BREAK ADAPTOR**

**MATERIAL:** Galvanised Steel  
**THICKNESS:** 3mm  
**MAX. DOOR WEIGHT:** 400kg  
 Low headroom set for cable break safety device (Part 3220)  
 Cable fixing outside vertical track with shuttle  
**Dimensions:** 152 x 70 x 125 mm  
**Unit:** Pair (2)  
**Weight:** 1.93kg

**3222****3" NON-ADJUSTABLE - SAFETY BOTTOM CORNER BRACKET**

**MATERIAL:** Galvanised Steel  
**THICKNESS:** 3mm  
**MAX. DOOR WEIGHT:** 750kg  
**MAX. CABLE DIAMETER:** 6mm  
**TRACKS:** To suit 3"  
 Suitable for 3" tracks approved by TUV/BG under No. 94072  
**Dimensions:** 300 x 105 x 118 mm  
**Unit:** Pair (2)  
**Weight:** 6.5kg

VISIT OUR WEBSITE:  
[WWW.OSADOORPARTS.CO.UK](http://WWW.OSADOORPARTS.CO.UK)



**3223****2" ADJUSTABLE - SAFETY BOTTOM CORNER BRACKET**

MATERIAL: Galvanised Steel  
 THICKNESS: 3mm  
 MAX. DOOR WEIGHT: 750kg  
 MAX. CABLE DIAMETER: 5mm  
 TRACK: To suit 2"  
 Suitable for 2" tracks approved by TUV/BG under No. 94072  
 11mm diameter Rollers  
 Including Threaded Tube and Nut for Adjustment  
 Dimensions: 143 x 128 x 70 mm  
 Unit: Pair (2)  
 Weight: 3.42kg

**3224****2" ADJUSTABLE WITH COVER - SAFETY BOTTOM CORNER BRACKET**

MATERIAL: Galvanised Steel, Black Plastic  
 THICKNESS: 3mm  
 MAX. DOOR WEIGHT: 400kg  
 MAX. CABLE DIAMETER: 5mm  
 TRACK: To suit 2"  
 Approved by TUV/BG under No. 94072  
 11mm Rollers Standard PVC cover  
 To suit 2" Tracks  
 Dimensions: 205 x 150 x 86 mm  
 Unit: Pair (2)  
 Weight: 2.29kg

**3225****COVERS FOR SAFETY BOTTOM CORNER BRACKETS**

MATERIAL: Black Plastic  
 THICKNESS: 2mm  
 Black plastic covers to suit standard 3324 Adjustable  
 Safety Bottom  
 Corner Brackets 2"  
 Dimensions: 150 x 100 x 90 mm  
 Unit: Pair (2)  
 Weight: 0.112kg

**3226****2" ADJUSTABLE WITH COVER (D TYPE) - SAFETY BOTTOM CORNER BRACKET**

MATERIAL: Galvanised Steel, Orange Plastic  
 THICKNESS: 3mm  
 MAX. Door Weight: 450kg  
 TRACK: To suit 2"  
 11mm Rollers Standard Orange Plastic cover  
 Adjustable cable length through eyebolt  
 Dimensions: 240 x 131 x 66 mm  
 Unit: Pair (2)  
 Weight: 2.33kg

VISIT OUR WEBSITE:  
[WWW.OSADOORPARTS.CO.UK](http://WWW.OSADOORPARTS.CO.UK)



**3227****THREADED TUBE & NUTS TO SUIT 3223**

MATERIAL: Galvanised Steel  
 Threaded Tubes and Nuts to suit 3223 Safety  
 Bottom Corner Brackets  
 Dimensions: 60 x 15 (Threaded Tube) & 23 x 6 (Nut)mm  
 Unit: Pair (2)  
 Weight: 0.126kg

**3228****NON-ADJUSTABLE CE LHR - SAFETY BOTTOM CORNER BRACKET**

MATERIAL: Galvanised Steel  
 THICKNESS: 3mm  
 MAX. DOOR WEIGHT: 750kg  
 MAX. CABLE DIAMETER: 6mm  
 TRACKS: To suit 2"  
 11mm Rollers Standard  
 To suit 2" Low Headroom Tracks  
 Dimensions: 214 x 76 x 90 mm  
 Unit: Pair (2)  
 Weight: 3.8kg

**3230****CABLE SLACK DEVICE (3224,3219)**

Suitable for fitting to 3224 & 3219 cable break devices.  
 Micro switch is designed to stop the electric operator when  
 cable break is relieved.  
 Complete with 2core cable  
 Unit: Piece(1)  
 Weight: 0.03kg

**3231****CABLE SLACK DEVICE LEFT HAND (3218,3220,3223)**

Suitable for fitting to 3218,3220 & 3223 cable break devices.  
 Micro switch complete with brackets designed to stop the  
 electric operator when cable break is relieved.  
 Complete with 2core cable  
 Unit: Piece(1)  
 Weight: 0.03kg

VISIT OUR WEBSITE:  
[WWW.OSADOORPARTS.CO.UK](http://WWW.OSADOORPARTS.CO.UK)



**3232****CABLE SLACK DEVICE RIGHT HAND (3218,3220,3223)**

Suitable for fitting to 3218,3220 & 3223 cable break devices.  
Micro switch complte with brackets designed to stop the electric operator when cable break is relieved.

Complete with 2core cable

Unit:Piece(1)

Weight:0.03kg

**3233****CABLE SLACK DEVICE (3205)**

Suitable for fitting to 3205 Bottom brackets

Micro switch is designed to stop the electric operator when cable tension drops due to decrease of the door weight on the cable

Complete with 2core cable

Unit:Piece(1)

Weight:0.03kg

**G25161****DUPLEX ROLLER (RESIDENTIAL)**

To suit Residential Doors

**G25163****DUPLEX SIDE HINGE (RESIDENTIAL)**

To suit Residential Doors

VISIT OUR WEBSITE:  
[WWW.OSADOORPARTS.CO.UK](http://WWW.OSADOORPARTS.CO.UK)



**4100****WINDOW - 624**

MATERIAL: Black injection moulded frames, SAN Acrylic  
 OVERALL FRAME SIZE: 609 x 146mm - CUT OUT  
 SIZE: 588 x 123mm  
 Rectangular with radiused corners - 2 x 3mm Plexiglass  
 Butyl Seals and Fasteners supplied - To suit panel  
 thickness 40mm  
 Dimensions: 609 x 146 x 42 mm  
 Unit: Piece (1) - Weight: 0.88kg

**4101****WINDOW-824**

MATERIAL: Black injection moulded frames, SAN Acrylic  
 OVERALL FRAME SIZE: 609 x 203mm CUT OUT  
 SIZE: 588 x 181mm  
 Rectangular with radiused corners  
 2 x 3mm Plexiglass - Butyl Seals and Fasteners supplied  
 To suit panel thickness 40mm  
 Unit: Piece (1) - Weight: 1.14kg

**4103****WINDOW - 1326**

MATERIAL: Black injection moulded frames, SAN Acrylic  
 OVERALL FRAME SIZE: 664 x 345mm  
 CUT OUT SIZE: 638 x 320mm, R=100mm  
 Rectangular with 100mm radiused corners  
 2 x 3mm Plexiglass Butyl Seals and Fasteners supplied  
 To suit panel thickness 40mm  
 Unit: Piece (1) Weight: 1.52kg

**4105****WINDOW - 0120**

MATERIAL: Black injection moulded frames, SAN Acrylic  
 OVERALL FRAME SIZE: 329mm R  
 CUT OUT SIZE: 257mm R  
 Circular  
 2 x 3mm Plexiglass  
 Butyl Seals and Fasteners supplied  
 To suit panel thickness 38-40mm  
 Dimensions: 330 x 42 mm  
 Unit: Piece (1) - Weight: 0.65kg)

VISIT OUR WEBSITE:  
[WWW.OSADOORPARTS.CO.UK](http://WWW.OSADOORPARTS.CO.UK)





**4109****SECURITY VIEWING WINDOW**

MATERIAL: Steel Frame, Wired Glass  
 OVERALL FRAME SIZE: 178 x 178mm  
 CUT OUT SIZE: 152 x 152mm  
 Square 150 x 150 steel frame primed single glazed  
 polished georgian wire glass  
 To suit panel thickness 40mm  
 Dimensions: 178 x 178 x 44 mm  
 Unit: Piece (1)  
 Weight: 2.4kg

**4110****WINDOW - 80MM PANEL**

MATERIAL: Black injection moulded frames, SAN Acrylic  
 OVERALL FRAME SIZE: 336 x 640 x 82mm  
 CUT OUT SIZE: 305 x 610mm  
 Square Corner Vision Window 2 x 2mm PMMA  
 Butyl Seals and Fasteners supplied  
 To suit panel thickness 80mm  
 Unit: Piece (1) Weight: 2.75kg

**4112****WINDOW -SQUARE CORNER**

MATERIAL: Black injection moulded frames, SAN Acrylic  
 OVERALL FRAME SIZE: 680 x 373mm CUT OUT  
 SIZE: 650 x 345mm  
 Rectangular with square end 2 x 3mm acrylic sheets  
 Butyl Seals 'Screw' connection  
 To suit panel thickness 40mm  
 Dimensions: 680 x 373 x 42 mm Unit: Piece (1) Weight: 1.7kg

**4113****WINDOW -ROUND CORNER**

MATERIAL: Black injection moulded frames, SAN Acrylic  
 OVERALL FRAME SIZE: 663 x 343mm, R=131mm  
 CUT OUT SIZE: 640 x 320mm Rectangular with oval end  
 2 x 3mm acrylic sheets - Butyl Seals - 'Screw' connection  
 To suit panel thickness 40mm  
 Unit: Piece (1) Weight: 1.6kg

VISIT OUR WEBSITE:  
[WWW.OSADOORPARTS.CO.UK](http://WWW.OSADOORPARTS.CO.UK)



**4199****'N' TYPE SINGLE END CAP - PUNCHED**

MATERIAL: Galvanised Steel  
 THICKNESS: 2mm  
 Universal Single to suit 670 x 45mm 'N' Type Panel  
 Dimensions: 657 x 70 x 47 mm  
 Unit: Piece (1)  
 Weight: 0.972kg

**4200****80MM DOUBLE END CAP - PUNCHED**

MATERIAL: Galvanised Steel  
 THICKNESS: 2mm  
 Universal to suit 610 x 80mm panel  
 Dimensions: 600 x 155 x 82 mm  
 Unit: Piece (1)  
 Weight: 1.174kg

**4201****80MM SINGLE END CAP - PUNCHED**

MATERIAL: Galvanised Steel  
 THICKNESS: 2mm  
 Universal to suit 610 x 80mm panel  
 Dimension: 600 x 77 x 82 mm  
 Unit: Piece (1)  
 Weight: 0.813kg

**4202****SINGLE END CAP - PUNCHED**

MATERIAL: Galvanised Steel  
 THICKNESS: 2mm  
 Universal to suit 610 x 40mm panel  
 Dimensions: 600 x 70 x 43 mm  
 Unit: Piece (1)  
 Weight: 0.537kg

VISIT OUR WEBSITE:  
[WWW.OSADOORPARTS.CO.UK](http://WWW.OSADOORPARTS.CO.UK)



**4203****DOUBLE END CAP - PUNCHED**

MATERIAL: Galvanised Steel  
 THICKNESS: 2mm  
 Universal to suit 610 x 40mm panel  
 Dimensions: 600 x 149 x 43 mm  
 Unit: Piece (1)  
 Weight: 0.934kg

**4204****END CAP DOUBLE PUNCHED 900 X 40MM**

MATERIAL: Galvanised Steel  
 THICKNESS: 2mm  
 Universal to suit 900mm x 40mm deep panels  
 Dimensions: 900 x 149 x 43mm  
 Unit: Piece (1)  
 Weight: 1.39kg

**4205****SINGLE END CAP - PLAIN**

MATERIAL: Galvanised Steel  
 THICKNESS: 2mm  
 Universal to suit 500 x 40mm 'C' Type Panel  
 Dimensions: 496 x 73 x 45 mm  
 Unit: Pair (2)  
 Weights: 1.06kg / Pair

**4208****SINGLE END CAP - PUNCHED**

MATERIAL: Galvanised  
 THICKNESS: 2mm  
 Universal to suit 500 x 40mm panel  
 Dimensions: 490 x 70 x 43 mm  
 Unit: Piece (1)  
 Weight: 0.448kg

VISIT OUR WEBSITE:  
[WWW.OSADOORPARTS.CO.UK](http://WWW.OSADOORPARTS.CO.UK)



**4209/1**



**900MM SINGLE END CAP**

MATERIAL: Galvanised Steel  
THICKNESS: 2mm  
Universal to suit 900mm deep x 40mm panel  
Dimensions: 900 x 76 x 43 mm  
Unit: Piece (1)  
Weights: 0.946kg

**4210**



**TOP/BOTTOM RETAINER**

MATERIAL: Aluminium  
THICKNESS: 2mm  
LENGTH: 6100mm  
Aluminium profile to suit 40mm panel  
Dimensions: 43 x 35 x 40.5 mm  
Unit: Piece (1)  
Weight: 2.5kg (0.41kg per linear Metre)

**4211**



**TOP/BOTTOM RETAINER**

MATERIAL: Aluminium  
THICKNESS: 2mm  
LENGTH: 5050mm  
Aluminium profile to suit 40mm panel  
Dimensions: 43 x 35 x 40.5 mm  
Unit: Piece (1)  
Weight: 2.07kg (0.41kg per linear Metre)

**4212**



**FLAT PROFILE TOP/BOTTOM RETAINER**

MATERIAL: Aluminium  
LENGTH: 6000mm  
Aluminium profile flat profile  
Dimensions: 44 x 7 x 6000  
Unit: Piece (1)  
Weight: 1.7kg (0.28kg per linear Metre)

VISIT OUR WEBSITE:  
[WWW.OSADOORPARTS.CO.UK](http://WWW.OSADOORPARTS.CO.UK)



**4213****TOP/BOTTOM RETAINER**

MATERIAL: Aluminium  
 THICKNESS: 2mm  
 LENGTH: 4050mm  
 Aluminium profile to suit 40mm panel  
 Dimensions: 43 x 35 x 40.5 mm  
 Unit: Piece (1)  
 Weight: 1.66kg (0.41kg per linear Metre)

**4214****TOP/BOTTOM RETAINER - EXTENDED**

MATERIAL: Aluminium  
 THICKNESS: 2mm  
 LENGTH: 6100mm  
 100mm Deep  
 Aluminium profile to suit 40mm panel  
 Dimensions: 43 x 100 x 39 mm  
 Unit: Piece (1)  
 Weight: 8.29kg (1.36kg per linear Metre)

**4215****TOP/BOTTOM RETAINER - EXTENDED**

MATERIAL: Aluminium  
 THICKNESS: 2mm  
 LENGTH: 5050mm  
 100mm Deep  
 Aluminium profile to suit 40mm panel  
 Dimensions: 43 x 100 x 39 mm  
 Unit: Piece (1)  
 Weight: 6.87kg (1.36kg per linear Metre)

**4216****80MM TOP/BOTTOM RETAINER**

MATERIAL: Aluminium  
 THICKNESS: 2mm  
 LENGTH: 6090mm  
 Aluminium profile to suit 80mm panel  
 Dimensions: 83 x 35 x 40.5 mm  
 Unit: Piece (1)  
 Weight: 4.51kg (0.74kg per linear Metre)

VISIT OUR WEBSITE:  
[WWW.OSADOORPARTS.CO.UK](http://WWW.OSADOORPARTS.CO.UK)



**4217****'CML' TYPE TOP/BOTTOM RETAINER**

MATERIAL: Aluminium  
 THICKNESS: 2mm  
 LENGTH: 6090mm  
 Aluminium to suit 40mm 'CML' Type Panel & Top Retainer  
 on 'C' Type  
 Dimensions: 45 x 35 mm  
 Unit: Piece (1)  
 Weight: 2.6kg (0.43kg per linear metre)

**4218****'N' TYPE TOP/BOTTOM RETAINER**

MATERIAL: Aluminium  
 THICKNESS: 2mm  
 LENGTH: 5600mm  
 Aluminium to suit 45mm 'N' Type Panel  
 Dimensions: 48 x 32 mm  
 Unit: Piece (1)  
 Weight: 2.8kg (0.40kg per linear metre)

**4219****PANEL ADAPTOR - STEP (C) TYPE**

MATERIAL: Aluminium  
 THICKNESS: 2mm  
 LENGTH: 6100mm  
 Anodised Aluminium to suit 40mm panel  
 Adapts to most step type panel joints  
 Dimensions: 44 x 45 x 6100 mm  
 Unit: Piece (1)  
 Weight: 2.5kg (0.5kg per linear Metre)

**4220****'L' SHAPED WITH LIP TOP/BOTTOM RETAINER**

MATERIAL: Aluminium  
 THICKNESS: 2mm  
 LENGTH: 6090mm  
 Aluminium to suit 40mm panel complete with Lip  
 Dimensions: 67 x 43 x 39 mm  
 Unit: Piece (1)  
 Weight: 3.4kg (0.56kg per linear metre)

VISIT OUR WEBSITE:  
[WWW.OSADOORPARTS.CO.UK](http://WWW.OSADOORPARTS.CO.UK)



**4221****RESIDENTIAL RETAINER - BLACK RAL9011**

MATERIAL: Aluminium powder coated Black - RAL 9011  
 THICKNESS: 2mm  
 LENGTH: 6090mm  
 Aluminium Black RAL9011 to suit 40mm panel  
 Dimensions: 43 x 35 x 40.5 mm  
 Unit: Piece (1)  
 Weight: 3.6kg (0.59kg per linear metre)

**4222****TOP SEAL**

MATERIAL: EPDM  
 THICKNESS: 3mm  
 Extended Lip 58mm  
 Bulk Quantity: 35.000 Metre  
 Dimensions: 52 x 29 mm  
 Unit: Linear Metre (1.000)  
 Weight: 0.36kg / Linear Metre (1.000)

**4224****RESIDENTIAL RETAINER - WHITE RAL9016**

MATERIAL: Aluminium powder coated White - RAL 9016  
 THICKNESS: 2mm  
 LENGTH: 6090mm  
 Aluminium White RAL9016 to suit 40mm panel  
 Dimensions: 43 x 35 x 40.5 mm  
 Unit: Piece (1)  
 Weight: 3.6kg (0.59kg per linear metre)

**4225****BOTTOM SEAL**

MATERIAL: EPDM  
 THICKNESS: 3mm  
 Also used with pneumatic safety edge  
 Bulk Quantity: 35.000 Metre  
 Dimensions: 60 x 37 mm  
 Unit: Linear Metre (1.000)  
 Weight: 0.63kg / Linear Metre

VISIT OUR WEBSITE:  
[WWW.OSADOORPARTS.CO.UK](http://WWW.OSADOORPARTS.CO.UK)

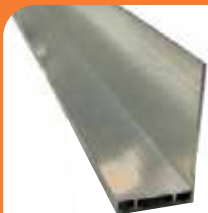


**4226****'N' TYPE BOTTOM SEAL**

MATERIAL: EPDM  
 THICKNESS: 3mm  
 EPDM to suit Part Nos: 4218  
 To suit 'N' Type Retainer - 4218  
 Bulk Quantity: 35.000 Metre  
 Dimensions: 40 x 60 mm  
 Unit: Linear Metre (1.000)  
 Weight: 0.92kg / Linear Metre (1.000)

**4227****BOTTOM SEAL - OPTICAL SAFETY EDGE TYPE**

MATERIAL: EPDM  
 THICKNESS: 3mm  
 Bulk Quantity: 25.000 Metre  
 Dimensions: 75 x 25 x (x) mm  
 Unit: Linear Metre (1.000)  
 Weight: 0.67kg / Linear Metre (1.000)

**4229****'L' SHAPED TOP/BOTTOM RETAINER**

MATERIAL: Aluminium  
 THICKNESS: 2mm  
 LENGTH: 6090mm  
 Aluminium to suit 40mm panel complete without Lip  
 Dimensions: 67 x 43 x 39 mm  
 Unit: Piece (1)  
 Weight: 3.35kg (0.55kg per linear metre)

**4230****RESIDENTIAL SINGLE END CAPS - LEFT HAND**

MATERIAL: Galvanised Steel (Powder coating Optional)  
 THICKNESS: 2mm  
 Galvanised (4230) or White Lacquered (4234)  
 500mm deep x 40mm panel  
 Dimensions: 496 x 73 x 45 mm  
 Unit: Piece (1)  
 Weight: 0.53kg

VISIT OUR WEBSITE:  
[WWW.OSADOORPARTS.CO.UK](http://WWW.OSADOORPARTS.CO.UK)





**4231****RESIDENTIAL SINGLE END CAPS - RIGHT HAND**

MATERIAL: Galvanised Steel (Powder coating Optional)  
 THICKNESS: 2mm  
 Galvanised (4231) or White Lacquered (4235)  
 500mm deep x 40mm panel  
 Dimensions: 496 x 73 x 45 mm  
 Unit: Piece (1)  
 Weight: 0.53kg

**4232****RESIDENTIAL SINGLE END CAPS - LEFT HAND**

MATERIAL: Galvanised Steel (Powder coating Optional)  
 THICKNESS: 2mm  
 Galvanised (4232) or White Lacquered (4236)  
 750mm deep x 40mm panel  
 Dimensions: 746 x 73 x 45 mm  
 Unit: Piece (1)  
 Weight: 0.79kg

**4233****RESIDENTIAL SINGLE END CAPS - RIGHT HAND**

MATERIAL: Galvanised Steel (Powder coating Optional)  
 THICKNESS: 2mm  
 Galvanised (4233) or White Lacquered (4237)  
 750mm deep x 40mm panel  
 Dimensions: 746 x 73 x 45 mm  
 Unit: Piece (1)  
 Weight: 0.79kg

**4310****SHOOT BOLT - DELTA TYPE - SPRING LOADED**

MATERIAL: Galvanised Steel  
 THICKNESS: 2mm  
 STROKE: 70mm  
 PIN DIAMETER: 12mm  
 Pre-assembled with round 12 mm bar with pointed end.  
 Wide base and 2 flanges. 6 Slotted holes are provided for securing to the panel, and is adjustable during installation  
 For electrical doors be sure to combine with Interlock Switch - 5135  
 Dimensions: 142 x 90 x 90 mm  
 Unit: Piece (1) Weight: 0.74kg

VISIT OUR WEBSITE:  
[WWW.OSADOORPARTS.CO.UK](http://WWW.OSADOORPARTS.CO.UK)



**4311****SHOOT BOLT - SPRING LOADED WITH BLACK KNOB**

MATERIAL: Galvanised Steel and Black Plastic  
 THICKNESS: 3mm  
 Suitable for inside use only  
 Shoot bolt for securing sectional doors internally  
 Dimensions: 92 x 44 x 34 mm  
 Unit: Piece (1)  
 Weight: 0.48kg

**4315****INDUSTRIAL CYLINDER SIDE LOCK**

MATERIAL: Aluminum, Galvanised Steel  
 STROKE: 15mm  
 PIN DIAMETER: 48mm  
 Commercial - for inside or outside use on 38 - 42mm panels  
 The lock mechanism (inside) can be (un)locked by the lever.  
 Deflection of bar is 70mm. Fixing material included  
 Dimensions: 488 x 42 x 105 mm  
 Unit: Piece (1)  
 Weight: 2.6kg

**4320****FOOT STEP HANDLE**

MATERIAL: Black Nylon  
 THICKNESS: 3mm  
 Lifting Handle for 37-42mm Panels  
 Dimensions: 255 x 120 x 69 mm  
 Unit: Piece (1)  
 Weight: 0.35kg

**4322****VENTILATION GRILLE**

MATERIAL: Plastic  
 THICKNESS: 3mm  
 AIR PASSAGE: 155cm<sup>2</sup>  
 Open/close with fly screen  
 Available in Black and White  
 Dimensions: 344 x 138 x 18 mm  
 Unit: Piece (1)  
 Weight: 0.3kg

VISIT OUR WEBSITE:  
[WWW.OSADOORPARTS.CO.UK](http://WWW.OSADOORPARTS.CO.UK)



**4323****DOOR WARNING SAFETY LABEL**

A4 Sheet of safety/warning labels.  
Contains Torsion spring, bottom bracket warnings  
general door use and 16 warning triangles  
Unit: Piece (1)  
Weight: 0.01kgs

**4331****65MM PANEL STRUT**

MATERIAL: Galvanised Steel  
THICKNESS: 0.75mm  
Reinforcement Profile to prevent against bending of door  
panels for wider doors. Special OMEGA designed shape  
provides optimum stiffness at the lowest linear meter weight  
Dimensions: 58 x 65 x 30 x 7520  
Unit: Piece (1)  
Weight: 9.4kg (1.25kg per linear Metre)

**4332****110MM PANEL STRUT**

MATERIAL: Galvanised Steel  
THICKNESS: 1mm  
Reinforcement Profile to prevent against bending of door  
panels for wider doors. Special OMEGA designed shape  
provides optimum stiffness at the lowest linear meter weight  
Dimensions: 58 x 110 x 30 x 7520  
Unit: Piece (1)  
Weight: 17.52kg (2.33kg per linear Metre)

**4333****INSTALLATION CLIP FOR PANEL STRUTS**

MATERIAL: Galvanised Steel  
THICKNESS: 3mm  
Panel Strut Installation Clip - secure using standard  
panel fixings  
Dimensions: 34 x 34 x 5.5 mm  
Unit: Piece (1)  
Weight: 0.03kg

VISIT OUR WEBSITE:  
[WWW.OSADOORPARTS.CO.UK](http://WWW.OSADOORPARTS.CO.UK)



**4400****LOW THRESHOLD PERSONNEL WICKET GATE - 900 X 2100**

**MATERIAL:** Galvanised Steel, Plastic, Aluminium  
**Low Threshold Wicket Door Kit - 900 x 2100**  
**Furniture:** Personnel Lever Handles, Door Closer  
**Electrical Accessories:** Safety Interlock, Junction Box, Spiral Cable  
**Locking:** Single Point Sash Lock  
**Threshold:** 30mm when Bottom Seal is Compressed  
**Optional:** Panic Bar Furniture complete with External Override (4407)  
**Dimensions:** 1020 x 2186 (Over frames) 890 x 2130 (Clear Opening)  
**Unit:** Piece (1)  
**Weight:** 17kg

**4401****DOOR CLOSER FOR WICKET GATE KIT**

**MATERIAL:** Galvanised Steel  
**Door Closer for Wicket Gate Kits**  
**Suitable for doors up to either 1100mm or 80kg in weight which ever comes first**  
**Certified to BS EN1154:1997+A1:2002**  
**Dimensions:** 290 x 125 x 55 mm  
**Unit:** Piece (1)  
**Weight:** 1.86kg

**4403****PERSONNEL LEVER HANDLES FOR WICKET GATE KIT**

**MATERIAL:** Galvanised Steel, Plastic  
**Personnel Lever Handles for Wicket Gate Kits**  
**Dimensions:** 130 x 140 x 27 mm  
**Unit:** Set (1)  
**Weight:** 0.16kg

**4406****LOW THRESHOLD PERSONNEL WICKET GATE - 1200 X 2100**

**MATERIAL:** Galvanised Steel, Plastic, Aluminium  
**Low Threshold Wicket Door Kit - 1200 x 2100**  
**Furniture:** Personnel Lever Handles, Door Closer  
**Electrical Accessories:** Safety Interlock, Junction Box, Spiral Cable  
**Locking:** Single Point Sash Lock  
**Threshold:** 30mm when Bottom Seal is Compressed  
**Dimensions:** 1520 x 2186 (Over frames) 1190 x 2130 (Clear Opening)  
**Unit:** Piece (1)  
**Weight:** 19kg

VISIT OUR WEBSITE:

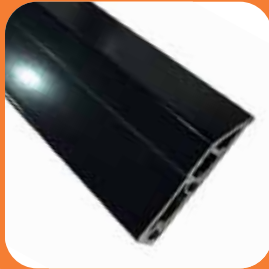
[WWW.OSADOORPARTS.CO.UK](http://WWW.OSADOORPARTS.CO.UK)

**4407****LOW THRESHOLD PUSH BAR KIT 900 X 2100MM**

MATERIAL: Galvanised Steel, Plastic, Aluminium  
 Low Threshold Wicket Door Kit - 900 x 2100  
 Furniture: Push Bar, Door Closer  
 Electrical Accessories: Safety Interlock, Junction Box, Spiral Cable  
 Locking: Single Point Sash Lock  
 Threshold: 30mm when Bottom Seal is Compressed  
 Dimensions: 1020 x 2186 (Over frames) 890 x 2130 (Clear Opening)  
 Unit: Piece (1)  
 Weight: 17kg

**4409****BLACK PROFILE (METRE)**

Black U Shaped profile to suit Low Threshold Bar 4410  
 Length: 7100mm  
 Unit: Piece (1)  
 Weight: 2.91kg (0.41kg per linear metre)

**4410****LOW THRESHOLD BLACK BAR (METRE)**

Low Threshold Bar to suit wickets gates 4400, 4406 & 4407  
 Length: 7100mm  
 Unit: Piece (1)  
 Weight: 10kgs (1.43kgs per linear metre)

**4411****100MM HEADBOARD (PAIR)**

100mm Extensions to fit into 4410  
 Prevents Low Threshold Bar from hitting the lintel during opening and closing operations

VISIT OUR WEBSITE:  
[WWW.OSADOORPARTS.CO.UK](http://WWW.OSADOORPARTS.CO.UK)



## PANELS



### 'W' TYPE 610 X 40 POLYESTER

Insulation: High density, self-extinguishing CFC-free Polyurethane foam  
 Metal layers: Pre-painted galvanised steel  
 Coating: 25 um Polyester  
 Inner and outer faces Stucco embossed  
 Female side incorporates a factory applied low density compressible foam seal, for air and water tightness  
 Both sides protected with adhesive polythene film (to be removed before installation)

## PANELS



### 'W' TYPE 610 X 40 PLASTISOL

Insulation: High density, self-extinguishing CFC-free Polyurethane foam  
 Metal layers: Pre-painted galvanised steel  
 Coating: 200um Plastisol  
 Inner and outer faces Stucco embossed (smooth Leathergrain for Plastisol)  
 Female side incorporates a factory applied low density compressible foam seal, for air and water tightness  
 Both sides protected with adhesive polythene film (to be removed before installation)

## PANELS



### 'W' TYPE 610 X 40 MICRO-RIB

Insulation: High density, self-extinguishing CFC-free Polyurethane foam  
 Metal layers: Pre-painted galvanised steel  
 Coating: 25 um Polyester  
 Inner face Stucco embossed  
 Female side incorporates a factory applied low density compressible foam seal, for air and water tightness  
 Both sides protected with adhesive polythene film (to be removed before installation)

## PANELS



### 'C' TYPE 500 X 40 STEEL AND ALUMINIUM

Industrial type panels, traditional stepped joint  
 Insulation: High density Polyurethane foam  
 Metal layers: Pre-painted galvanised steel or self colour aluminium  
 Inner and outer faces Stucco embossed

VISIT OUR WEBSITE:  
[WWW.OSADOORPARTS.CO.UK](http://WWW.OSADOORPARTS.CO.UK)



## PANELS



### 'CML' TYPE 600 X 42 STEEL

Industrial type panels, traditional joint  
Insulation: High density Polyurethane foam  
Metal layers: Pre-painted Silver RAL9006  
External - White RAL9002  
Internal Inner and outer faces Stucco embossed with Micro-Profile finish

## PANELS



### 'H' TYPE 750 X 42 STEEL

Insulation: High density, self-extinguishing CFC-free Polyurethane foam  
Metal layers: Pre-painted galvanised steel  
Coating: Zinc Coating 250g/m<sup>2</sup> with 25 um finish  
External Colour: RAL9002  
Internal Colour: RAL9010  
Inner and outer faces stucco embossed  
Fingersafe joint  
Both sides protected with adhesive polythene film (to be removed before installation)

## PANELS



### 'N' TYPE 675 X 45 ALUMINIUM

Industrial type panels: Fingersafe Joint  
Insulation: High density Polyurethane foam  
Metal layers: Self Colour Aluminium  
Inner and outer faces Stucco embossed Aluminium

VISIT OUR WEBSITE:  
[WWW.OSADOORPARTS.CO.UK](http://WWW.OSADOORPARTS.CO.UK)



**5000****CHAIN HOIST - 4:1 UNIVERSAL**

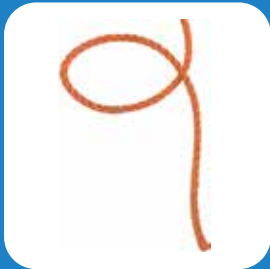
MATERIAL: Galvanised Steel  
 Chain Drive  
 Includes Chain Keep, 8m Hand Chain, Sprocket, Key and Drive Chain  
 Dimensions: 227 x 157 x 69 mm  
 Unit: Piece (1)  
 Weight: 7.5kg

**5004****CHAIN HOIST - 4:1**

MATERIAL: Galvanised Steel  
 Chain Drive  
 Includes Chain Keep, 8m Hand Chain, Sprocket, Key and Drive Chain  
 Dimensions: 422 x 125 x 250 mm  
 Unit: Piece (1)  
 Weight: 9.64kg

**5010****HAND CHAIN**

MATERIAL: Galvanised Steel  
 5010 for Chain Hoists Part Nos: 5000 and 5004  
 Dimensions: 30.6 x 4.95 mm  
 Unit: Linear Metre (1.000)  
 Weight: 0.5kg per Linear Metre

**5011****ORANGE ROPE**

Unit: Linear Metre (1.000)

VISIT OUR WEBSITE:  
[WWW.OSADOORPARTS.CO.UK](http://WWW.OSADOORPARTS.CO.UK)





**5012**



**ROPE CLIP**

Unit: Piece (1)

**5013**



**MOTOR HAUL CHAIN**

Check with OSA for compatibility  
Unit: Linear Metre (1.000)

**5014**



**GYM MOTOR HAUL CHAIN**

To suit gym motors - unit linear metre (1.000)

**5015**



**CHAIN KEEP**

Galvanised Steel  
Unit: Piece (1)

VISIT OUR WEBSITE:  
[WWW.OSADOORPARTS.CO.UK](http://WWW.OSADOORPARTS.CO.UK)



**5017**



**PNEUMATIC SAFETY EDGE - BUNGS**

To suit bottom seal 4225  
Unit: Set (1)

**5018**



**SPIRAL CABLE**

Dimension: 1 Metre  
Stretch: 4 Metre  
5 Core Spiral Cable  
Unit: Piece (1)

**5019**



**PNEUMATIC SAFETY EDGE - AIR SWITCH**

Use with 5017  
Unit: Piece (1)

**5022**



**SMALL JUNCTION BOX**

Unit: Piece (1)

VISIT OUR WEBSITE:  
[WWW.OSADOORPARTS.CO.UK](http://WWW.OSADOORPARTS.CO.UK)



**5086**



**DUO VISION 800 2NO TRANSMITTER (BOOM SOLD SEPERATELY)**

Single Phase Duo Vision+ Boom Operator  
Max door size:5500mm x 3000mm  
Max weight: 150kgs  
Unit: Set (1)

**5093**



**DUO VISION 650 C/W 2NO TRANSMITTERS (BOOM SOLD SEPERATELY)**

Single Phase Duo Vision+ Boom Operator  
Max door size:5000mm x 2350mm  
Max Weight:120kgs  
Unit: Set (1)

**5094**



**BOOM TO SUIT CLEAR OPENING HEIGHT 2350MM**

Motor Boom to suit up to Clear Opening Height of 2350mm  
Unit: Piece (1)

**5095**



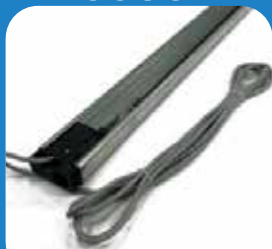
**BOOM TO SUIT CLEAR OPENING HEIGHT 2750MM**

Motor Boom to suit up to Clear Opening Height of 2750mm  
Unit: Piece (1)

VISIT OUR WEBSITE:  
[WWW.OSADOORPARTS.CO.UK](http://WWW.OSADOORPARTS.CO.UK)



**5096**



**BOOM TO SUIT CLEAR OPENING HEIGHT 3000MM**

Motor Boom to suit up to Clear Opening Height of 3000mm  
Unit: Piece (1)

**5103**



**GYM70- KE 1PH MOTOR PRE-WIRED**

Single Phase Motor 70 Nm with mechanical limits

**5105**



**GYM100- KE 3PH MOTOR PRE-WIRED**

3 Phase Motor 100 Nm with mechanical limits

**5111**



**NICE ACTION 3PH MOTOR PRE-WIRED**

3 Phase Motor 100 Nm with digital limits

VISIT OUR WEBSITE:  
[WWW.OSADOORPARTS.CO.UK](http://WWW.OSADOORPARTS.CO.UK)



**5112**



**NICE AUTOMATIC 3PH MOTOR PRE-WIRED**

3 Phase Motor 100 Nm with digital limits

**5116**



**REFLECTIVE PHOTOCELL**

Reflective Photocell  
8 Metre Maximum Opening  
Unit: Set (1)

**5118**



**REDUCING PLUG FOR OPTICAL SAFETY EDGE**

Reducing Plug for Optical Safety Edge Seal and Optical Eyes  
Unit: Piece (1)

**5119**



**OPTICAL SAFETY EDGE EYES AND REDUCING PLUGS**

Max 7m  
Complies with BS EN 12453 : 2001  
Unit: Set (1)

VISIT OUR WEBSITE:  
[WWW.OSADOORPARTS.CO.UK](http://WWW.OSADOORPARTS.CO.UK)



**5125**



#### INDUCTION LOOP CABLE

Induction loop cable  
Bulk Quantity: 100 metre reel  
Unit: Linear Metre (1.000)

**5127**



#### ECONOMY KEY SWITCH

Sprung Key Switch for Activation  
Unit: Piece (1)

**5131**



#### BUMPER BLOCKERS FOR OPTICAL SAFETY EDGE

Safety Bumper Blockers  
To be used in conjunction with 5119  
Unit: Pair (2)

**5135**



#### SAFETY INTERLOCK

Suitable for wicket door and shoot bolt  
Unit: Piece (1)

VISIT OUR WEBSITE:  
[WWW.OSADOORPARTS.CO.UK](http://WWW.OSADOORPARTS.CO.UK)



**5150**



**RANGER 91 - LOW LEVEL DISENGAGE - TS959**

Ranger 91-3ph complete with TS959 Control Panel and Digital Limits

**5151**



**5MTR PROTECTIVE CABLE FOR GFA**

Protected Cable Set(5m) Dig.Cable set Digital Limits

**5152**



**7MTR PROTECTIVE CABLE FOR GFA**

Protected Cable Set(7m) Dig.Cable set Digital Limits

**5153**



**9MTR PROTECTIVE CABLE FOR GFA**

Protected Cable Set(9m) Dig.Cable Set Digital Limits

VISIT OUR WEBSITE:  
[WWW.OSADOORPARTS.CO.UK](http://WWW.OSADOORPARTS.CO.UK)



**5154**



**13MTR PROTECTIVE CABLE FOR GFA**

Protected Cable Set (13m) Dig.Cable Set Digital Limits

VISIT OUR WEBSITE:  
[WWW.OSADOORPARTS.CO.UK](http://WWW.OSADOORPARTS.CO.UK)





## 8004-8007



### STEEL HINGED DOORS - EXIT

8004: 900 x 2100 (structural) LH  
8005: 900 x 2100 (structural) RH  
8006: 1,000 x 2100 (structural) LH  
8007: 1,000 x 2100 (structural) RH  
Door prepared for Panic Bolt exit hardware 8010  
RAL 7042 (Nearest)  
Stainless Hinges & Threshold  
Ready to fit  
Unit: Piece (1)

## 8014-8017



### STEEL HINGED DOORS - PERSONNEL

8014: 900 x 2100 (structural) LH  
8015: 900 x 2100 (structural) RH  
8016: 1,000 x 2100 (structural) LH  
8017: 1,000 x 2100 (structural) RH  
10 point locking system  
Euro profile cylinder lock  
RAL 7042 (Nearest)  
Stainless Hinges & Threshold  
Ready to fit  
Unit: Piece (1)

## 8009



### FRAME EXTENSION COVERS

Frame Extension Covers to suit Steel Hinged Doors  
Textured Grey Polyester Painted RAL 7042 (Nearest)  
(suitable to accept either powder coating or site painting)  
Extension Frame Slotted at Door Frame Adjustable  
Fixing Points  
Extra 65mm gain on the opening width  
Unit: Pair (2)

## 8010



### SINGLE PANIC BOLT FOR STEEL HINGED DOORS

Push Panic Bolt to suit Exit Steel Hinged Doors  
Unit: Piece (1)

VISIT OUR WEBSITE:  
[WWW.OSADOORPARTS.CO.UK](http://WWW.OSADOORPARTS.CO.UK)



**8011**



**EXTERNAL ACCESS LOCKING LEVER HANDLE**

External Access Locking Lever Handle to suit  
Exit Steel Hinged Doors  
For use with Panic Bolt 8010  
Unit: Piece (1)

**8018**



**EXTERNAL ACCESS LOCKING KNOB**

External Access Locking Knob to suit Exit Steel Hinged Doors  
For use with Panic Bolt 8010  
Unit: Piece (1)

**8021**



**3 POINT SASH LOCK**

3 Point Sash Lock for Steel Hinged Doors  
Unit: Piece (1)

**8022**



**HINGES TO SUIT STEEL HINGED DOORS - CE**

Hinge printed with CE Mark for Steel Hinged Doors  
Unit: Piece (1)

VISIT OUR WEBSITE:  
[WWW.OSADOORPARTS.CO.UK](http://WWW.OSADOORPARTS.CO.UK)



**8024**



**MULTI-POINT LOCK**

Multi Point Lock for Steel Hinged Doors  
Unit: Piece (1)

**8025**



**SECURITY ESCUTCHEON SET**

Security Escutcheon Set to suit Steel Hinged Doors  
Unit: Piece (1)

**8026**



**DOOR CLOSER FOR STEEL HINGED DOORS**

Door Closer to suit Steel Hinged Doors  
Unit: Piece (1)

**8027**



**LEVER HANDLE SET - EUROPEAN STYLE**

Lever Handle Set to suit European Style Steel Hinged Doors  
Unit: Pair (2)

VISIT OUR WEBSITE:  
[WWW.OSADOORPARTS.CO.UK](http://WWW.OSADOORPARTS.CO.UK)



**8029****FRAME SEAL**

Frame Seal to suit Perimeter of Steel Hinged Door Leaf  
Unit: Bundle (5.200 Metres Minimum)

**8034****FRICTION STAY FOR STEEL HINGED DOORS**

Fiction Stay to suit Steel Hinged Doors  
Unit: Piece (1)

**8035****LEVER HANDLE SET - LEFT HAND**

Left Hand Lever Handle Set complete with Back Plate  
to suit New Style Steel Hinged Doors  
Unit: Pair (2)

**8036****75MM BARREL WITH 3 STANDARD KEYS**

Euro Cylinder 75mm Barrel complete with 3 Standard Keys  
to suit Steel Hinged Doors  
Length: 75mm  
Offset A: 32.5mm  
Offset B: 42.5mm  
Unit: Piece (1)

VISIT OUR WEBSITE:  
[WWW.OSADOORPARTS.CO.UK](http://WWW.OSADOORPARTS.CO.UK)



**8037****LEVER HANDLE SET - RIGHT HAND**

Right Hand Lever Handle Set complete with Back Plate  
to suit New Style Steel Hinged Doors  
Unit: Pair (2)

**8038****TOP OR BOTTOM LOCK**

Top or Bottom Lock to suit Steel Hinged Doors  
Unit: Piece (1)

**8039****LOCK KEEP - LEFT HAND**

Left Hand Lock Keep for Steel Hinged Doors  
Unit: Piece (1)

**8040****LOCK KEEP - RIGHT HAND**

Right Hand Lock Keep for Steel Hinged Doors  
Unit: Piece (1)

VISIT OUR WEBSITE:  
[WWW.OSADOORPARTS.CO.UK](http://WWW.OSADOORPARTS.CO.UK)



**8041**



**TOP OR BOTTOM KEEPS**

Top or Bottom Lock Keep for Steel Hinged Doors  
Unit: Piece (1)

**8042**



**KEY COVERS**

Key Covers for Steel Hinged Doors  
Unit: Piece (1)

**7000**



**BOTTOM BAR - 30MM X 30MM X 6000MM**

Steel Bottom Bar  
Dimensions: 30mm x 30mm x 6000mm  
Unit: Piece (1)

**7001**



**BOTTOM BAR - 30MM X 6000MM**

30mm Tubular Polyamide Wind Bar  
Length: 6000mm  
Unit: Piece (1)

**7002**



**WIND BAR - 45MM X 6000MM**

45mm Tubular Polyamide Wind Bar  
Length: 6000mm  
Unit: Piece (1)

**7004**



**240V TRANSFORMER - 30VA**

Transformer for 1 Phase Control Panel 230v 30VA  
Unit: Piece (1)

VISIT OUR WEBSITE:  
[WWW.OSADOORPARTS.CO.UK](http://WWW.OSADOORPARTS.CO.UK)



**7005**



**BRAKE RECTIFIER (INTORQ-BLUE)**

Brake Rectifier (INTORQ-BLUE) for High Speed Doors  
Unit: Piece (1)

**7007**



**RADIO BAND TRANSMITTER - WIRELESS**

Radio Band Transmitter for High Speed Doors - Wireless  
For use with 7008 - Radio Band Receiver  
Unit: Piece (1)

**7008**



**RADIO BAND RECEIVER - WIRELESS**

Radio Band Receiver for High Speed Doors - Wireless  
For use with 7007 - Radio Band Transmitter  
Unit: Piece (1)

**7009**



**BELT BUCKLE**

Plastic Belt Buckle for Securing Lifting Belts on Folding Doors  
Unit: Piece (1)

VISIT OUR WEBSITE:  
[WWW.OSADOORPARTS.CO.UK](http://WWW.OSADOORPARTS.CO.UK)





**7010**



**30MM BELT GUIDE**

Plastic Belt Guide for Securing Lifting Belts for use  
with 30mm Wind Bars  
Unit: Piece (1)

**7011**



**45MM BELT GUIDE**

Plastic Belt Guide for Securing Lifting Belts for use  
with 45mm Wind Bars  
Unit: Piece (1)

**7012**



**LIFTING BELT - BLACK**

Black Lifting Belt for Folding High Speed Doors  
Bulk Quantity: 100.000m  
Unit: Linear Metre (1.000)

**7014**



**30MM RUBBER CAP FOR WIND BARS**

30mm Rubber Cap for 30mm Wind Bar  
Unit: Piece (1)

VISIT OUR WEBSITE:  
[WWW.OSADOORPARTS.CO.UK](http://WWW.OSADOORPARTS.CO.UK)



**7015**



**45MM RUBBER CAP FOR WIND BARS**

45mm Rubber Cap for 45mm Wind Bar  
Unit: Piece (1)

**7016**



**4 CHANNEL HAND TRANSMITTER**

4 Channel Hand Transmitter  
Unit: Piece (1)

**7020**



**PHOTOCELLS FOR HIGH SPEED DOORS**

Send and Receive Photocells for High Speed Doors  
Unit: Pair (2)

**7027**



**FEIG RADAR**

FEIG Radar  
Unit: Piece (1)

VISIT OUR WEBSITE:  
[WWW.OSADOORPARTS.CO.UK](http://WWW.OSADOORPARTS.CO.UK)



**7031**



**TAPE DRUM 1¼"**

1¼" Tape Drum to suit Folding Doors  
Unit: Piece (1)

**7032**



**FLASHING BEACONS**

**7033**



**FALCON MOTION SENSOR**

Falcon Motion Sensor Multi-directional Radar  
Remote available: 7037 - Falcon Remote  
Unit: Piece (1)

**7037**



**REMOTE CONTROL FOR FALCON RADAR**

Remote Control for Falcon Radar for Low Level Programming  
Unit: Piece (1)

VISIT OUR WEBSITE:  
[WWW.OSADOORPARTS.CO.UK](http://WWW.OSADOORPARTS.CO.UK)



**7038**



**ISOLATOR SWITCH FOR TS970**

Isolator Switch for TS970 Control Panel  
Unit: Piece (1)

**7047**



**BRAKE RECTIFIER (6FA)**

Brake Rectifier

**7109**



**BOTTOM SEAL - RESISTIVE SAFETY EDGE**

MATERIAL: EPDM  
THICKNESS: 2mm  
Incorporates a conductive runner contact strip  
Bulk Quantity: 25.000 Metre  
Dimensions: 25 x 33 x (x) mm  
Unit: Linear Metre (1.000)  
Weight: 0.36kg / Linear Metre (1.000)

**7110**



**RESISTIVE SAFETY EDGE BOTTOM RETAINER**

MATERIAL: Aluminium  
THICKNESS: 2mm  
Aluminium Channel for Resistive Safety Edge  
Dimensions: 25 x 14 mm  
Unit: Linear Metre (1.000)  
Weight: 0.33kg per linear metre

VISIT OUR WEBSITE:  
[WWW.OSADOORPARTS.CO.UK](http://WWW.OSADOORPARTS.CO.UK)



## 7111-7112



### COMPONENTS FOR RESISTIVE SAFETY EDGE

MATERIAL: Black Plastic, EPDM

7111 - End cap and resistor for Resistive Safety  
Edge Seal (7109)

7112 - End cap and connector cable for Resistive Safety  
Edge Seal (7109)

Dimensions: 25 x 22 x 30 x 540 (Wire) & 28 x 31 x 17 mm

Unit: Piece (1)

Weight: 0.024kg

VISIT OUR WEBSITE:  
[WWW.OSADOORPARTS.CO.UK](http://WWW.OSADOORPARTS.CO.UK)









**To make an order please contact us at:**

**Tel:** 01928 703 580

**Fax:** 01928 759 984

**Email:** [sales@osadoorparts.co.uk](mailto:sales@osadoorparts.co.uk)

**Web:** [www.osadoorparts.co.uk](http://www.osadoorparts.co.uk)

**OSA Door Parts Limited**

Ashville Industrial Estate

Runcorn

Cheshire

WA7 3EZ