

MIRFLEX Auto-tracking

ROLLING WINDBREAK SPEED DOOR

The model MIRFLEX from Angel Mir is an auto-tracking rolling speed door to close medium-sized interior voids. It is perfect to divide different environments and passages between industrial units, warehouses or shops. As it is designed with small profiles, it takes up very little space of the light void and also requires little space on the side doorjambes and on the lintel. The upper platform and the steel profiles of the feet give it a great mechanical resistance.

It withstands light or moderate air currents and the canvas relies on a system of flexible reinforcements coming out of the guides when they receive a strong impact and return afterwards on the rails when the door lifts.

It has a mechanism with frequency inverter regulating the opening and closing speeds and the acceleration and the deceleration ramps when opening and closing.

It is an intensive use door.

Maximum sizes: 3300 x 3500

Wind resistance on standard configuration: Class 0.

CHASSIS

× General:

- Not self-supporting. It must be fastened to a resistant structure. Guides of anodized aluminium, Aluminio Plata Mate (Mat Silver Aluminium) on support profile and prelacquered galvanized steel reinforcement. Upper platform of galvanized steel.

Element	Material	Details
Guides	Extruded aluminium profile	It has internal reinforcements.
Back profile	Profile of white prelacquered galvanized steel	Double rectangular shape profile with central channel for guide profile.
Tracking	Polyurethane	Black.
Base	Stainless steel sheet	It has holes for fastening to the ground.
Fastening	Anchoring suitable to the kind of support (metallic, chemical dowels, etc.)	Fastening to the ground and, according to the height and the required wind pressure, several intermediate fastenings on walls or on a resistant structure.

× Head:

Element	Material	Details
Shaft lid	Prelacquered steel sheet	White Pirineo.
Platform	Prelacquered steel sheet	White Pirineo.
Shaft	Aluminium drum	Of Ø110mm with reinforcement radius and hollow central knot with keyway.
	Solid profile of galvanized steel	Of Ø25.4mm with keyway along its entire length.
Supports	Profiles of painted galvanized steel sheet	It has housings for the self-adjusting ball bearings supporting the shaft
* The whole unit makes up a very strong beam that, resting on the feet-guide, supports the weight of the canvas and the lifting mechanism (gear-motor, shaft, etc.).		
Fastening	Anchoring suitable to the kind of support (metallic, chemical dowels, etc.).	It is fixed on the lintel or a resistant structure to keep the vertical position and to avoid bulging or movements due to the rotation of the shaft.

Structure options

- ✓ Painted in RAL colour, to be chosen by customer among a wide range

CANVAS

Element	Mass (kg/m ²)	Work temperature (°C)	Characteristics
Canvas	0.95	-20...+70	Base of high strength polyester technical fabric, coated with dyed PVC.
Material		Characteristics	
Side reinforcements	Concave-convex tubular profile made of fiberglass and polyester composite. Depending on the insert setting, with solid composite profile		Manufactured by pultrusion.
Skirting board	Galvanized steel tube		It includes flexible elements at the ends.
Fitting to the ground	Polyester bottom bag coated with PVC		Yellow bag with black diagonal strips.
Welding	All welding through high frequency including windows.		
Finishing	Bright lacquered on both sides; colour to be chosen from a wide range.		

Colours	Colours similar to RAL						
Reaction to fire M2	Red 3002	Yellow 1003	Green 6026	Blue 5005	Grey 7016	Grey 7040	White 9003
Reaction to fire M3	Ivory 1014	Orange 2004	Orange 2002	Black 9005	Brown 8016	Grey 9006	

	Components	Composition
Resistant characteristics	Wind resistance	Standard: Class 0 (without wind pressure).
Other wind resistances	To enquire.	

Canvas options
✓ PVC windows. Transparent glass quality 1 mm thick. Positive temperatures.

MOTORIZATION

Element	Characteristics
Operator	Angel Mir Irreversible gear motor for intensive use, including integrated position switches driven by the output shaft of the gear motor.
Location	On one side of the head.
Position switches	Mechanical.
Shaft	Void with measured keyway to receive the shaft of the door.
Electro brake	For precise positioning and canvas locking.
Unlocking	Through handle.
Manual drive	Through crank.
Voltage in volts	230/400 V three-phase
Frequency in Hz	50 Hz
Power	0.6...1.87 CV / 0.45...1.38 kW, depending on door sizes.
Protection IP	IP 54

Motor options	
✓	Front motor with chain drive.
✓	Protection lid for the motor in galvanized steel.
✓	Special voltages and frequencies.

Control panel	
Model	RSPV ECO
Keys on exterior lid	Switches for opening and emergency stop. Voltage breaker.
Logic controller	Programmable relay.
Frequency inverter	Opening and closing adjustable speeds. Speed opening, fast. Speed closing, slow. Acceleration ramps at the beginning of the movement. Deceleration ramps at the end of the movement. Protection of the motor because overconsumption and lack of phase.
Display registering status and information	Reports: position, kind of failure and manoeuvre controller. Switches for opening and closing through maintained contact and basic programming.
Control box IP	Painted steel, with input / output cable glands.
Protection	IP 65 offset with cable glands. IP 55 when assembling at the door foot.
Voltages	Power supply: 230 V single-phase. Manoeuvre: 24V DC.
Control panel electrical installation to the motor and to the fixed elements at the feet	Protected through aluminium accessible channel, fixed to the door foot on plastic supports.

Control panel options	
✓	Special voltages and frequencies.
✓	Fiberglass control box with IP increased or stainless steel.

OTHER CHARACTERISTIC ELEMENTS / QUALITIES / OPTIONS

× **Door electrical data**

The voltage wiring up to the panel unit has to be completed by a licensed electrician and must be protected according to the existing rules or standards.

The use of 300 mA superimmunized differentials is recommended.

STANDARD electrical characteristics	
Voltage V	230 V single-phase
Frequency Hz	50 Hz
Power kW	0.47...0.65 kW, depending on door size.
Protection	IP 54

For other voltages and frequencies, please ENQUIRE.

Other characteristics	
Work temperature	Standard: +5...+50°C It cannot be used in cold stores with negative temperature.

Safety	Used procedure
Anti-crushing	Photocells curtain protecting the entire width of the door and up to 2500 mm. height assembled inside the guides.
Vision	Bottom of the canvas painted with safety stripes (diagonal yellow / black).
Manoeuvres	Intermittent lights indicating the manoeuvre: exterior and interior. (UNE-EN 12453: 2000, 5.1.3 c)

× **Door speeds**

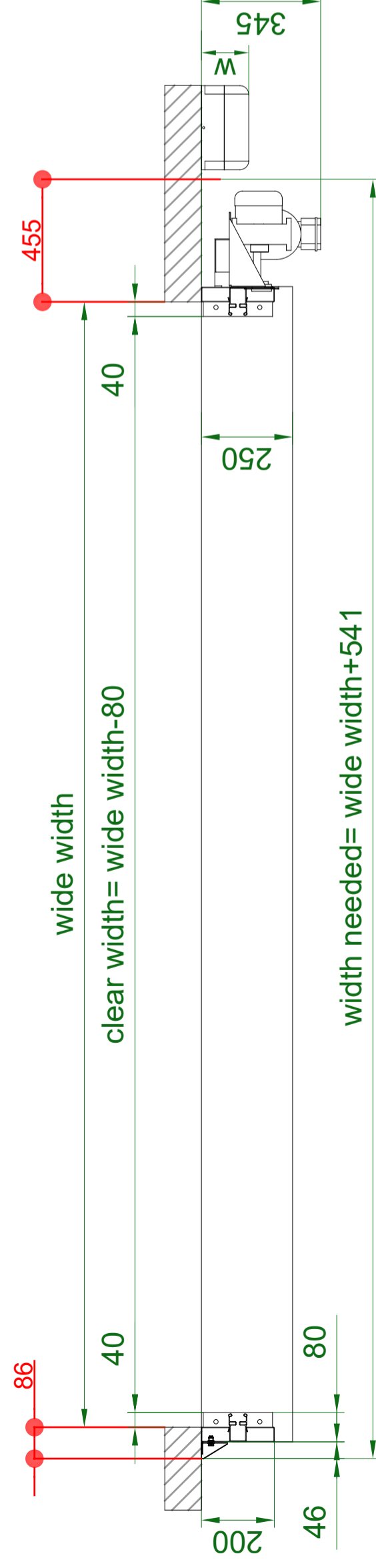
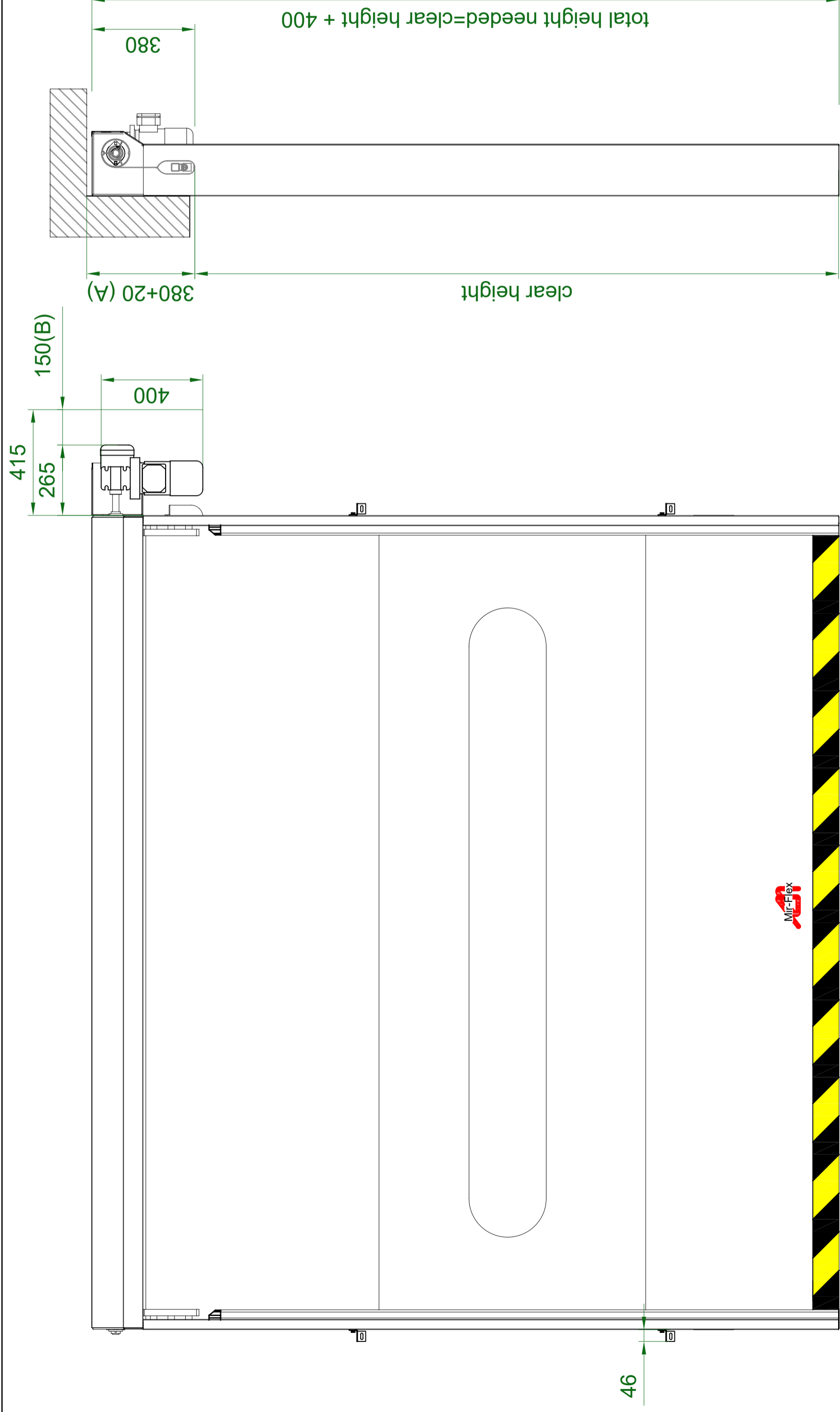
Speeds (m/s) *	Opening	Opening deceleration until	Closing
	0.82 m/s	0.60 m/s	0.60 m/s

*For other speeds, please ENQUIRE

CERTIFICATES AND STANDARDIZATIONS

Our doors are manufactured according to the UNE-EN 12453:2001 standard and meet the 98/37/CEE, 89/336/CEE, 89/106/CE y 73/23/CEE harmonization directives. They are tested and certified by a notified body, in compliance with the 13241-1 standard.

The information contained in this descriptive text is general for the referenced product. In no case is it binding or contractual. Portes Bisbal S.L. reserves the right to modify the features herein.

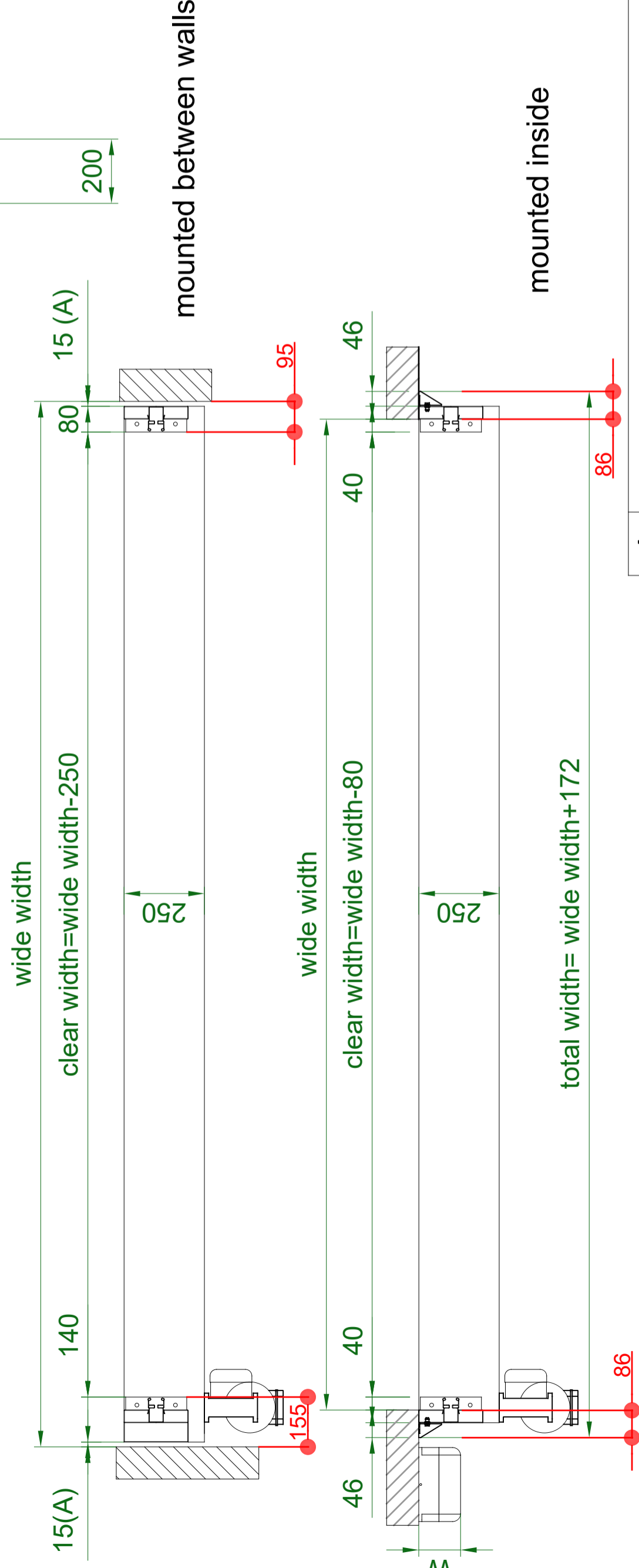
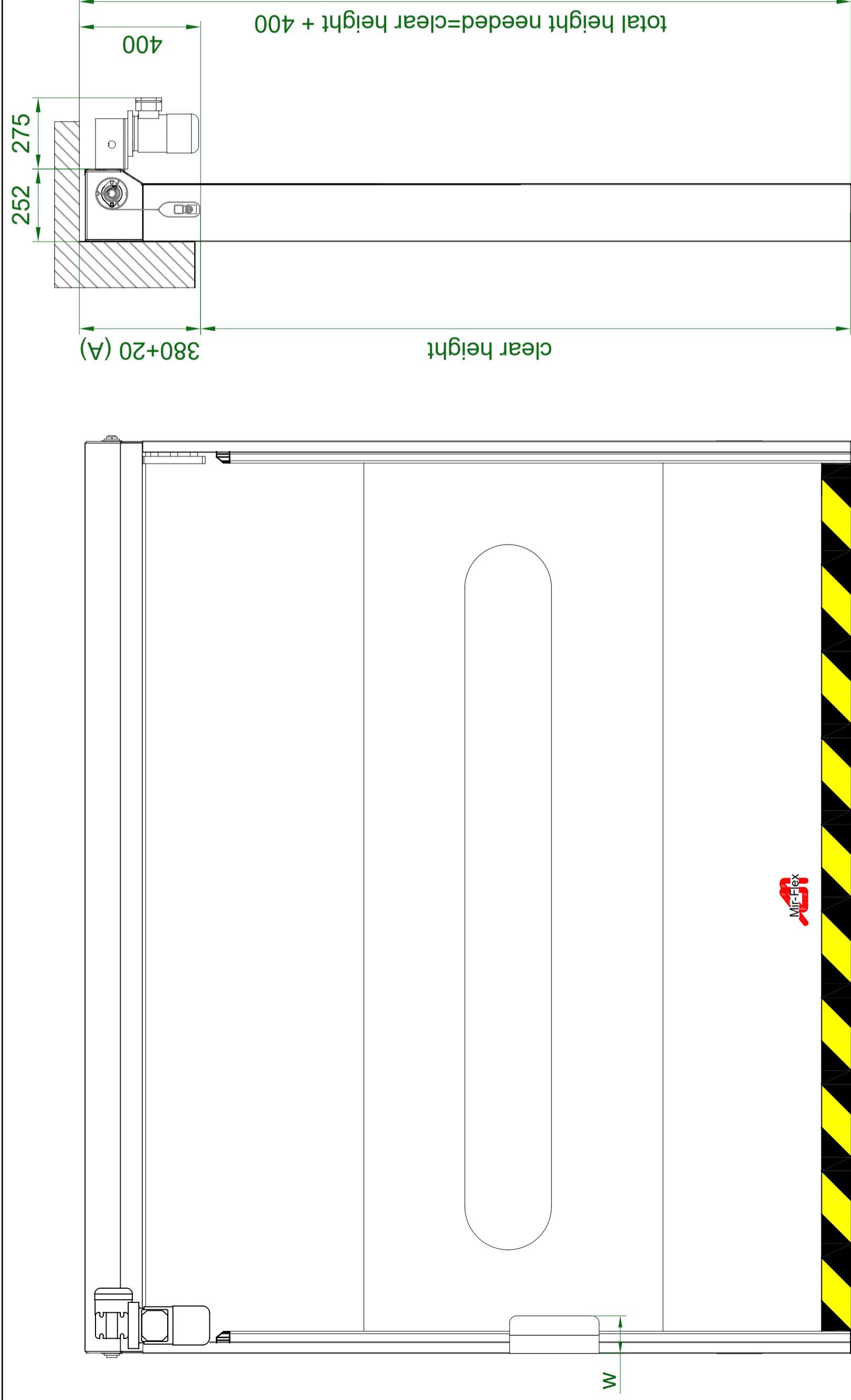


ELECTRICAL BOX	DIM. U x V x W
RSP	200 x 500 x 160
RSP INOX	300 x 400 x 150
RSP PLM	330 x 430 x 200

Model:	Mir Flex with lateral motor	
Maximum dimensions:	3300x3500 (width x height)	
mounting conditions:	door mounted inside	
Motor:	Pact	
Electrical supply:	Three phase 230/400 III	
For special dimensions consult our technical office		

Dibujado	Nombre	Fecha	 17100 LA BISBAL Girona Spain Tel: +34 972640620 Fax: +34 972642451
Comprobado	ofi. tecnica	18/04/12	
Familia: Rápidas		Título: Mir Flex	
Tipo: Mir Flex		Código: xxxxxx	
/I/ Material:		Conjunto al que pertenece: xxxxxx	

A	Installation allowance	VOLTAGE (V) - FREQUENCY (Hz)	POWER SUPPLY CABLE
B	For stroke limit switch setting	3x230/400-50	3x1,5+earth/10A
MOTOR	CURRENT (A) 230/415 V	1,7/1,0	
0,5 CV	POWER	0,37 KW	
		width needed= wide width+541	

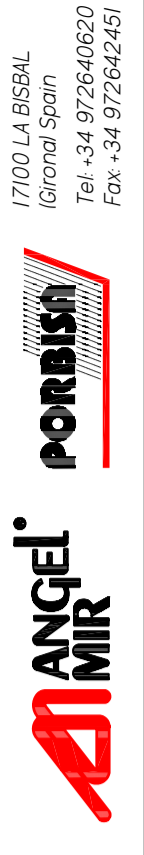


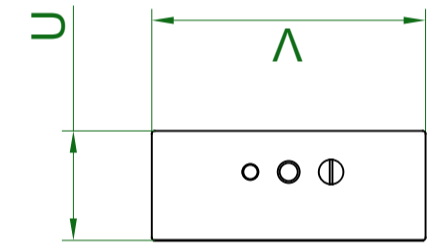
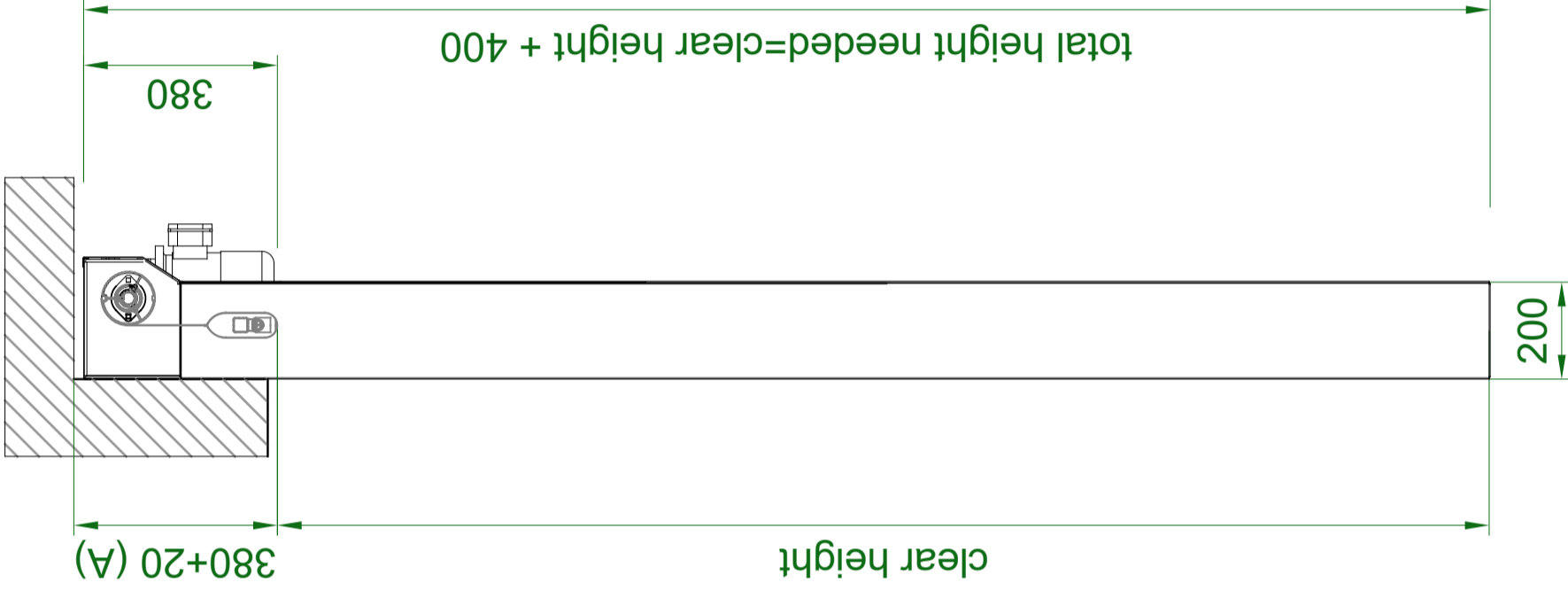
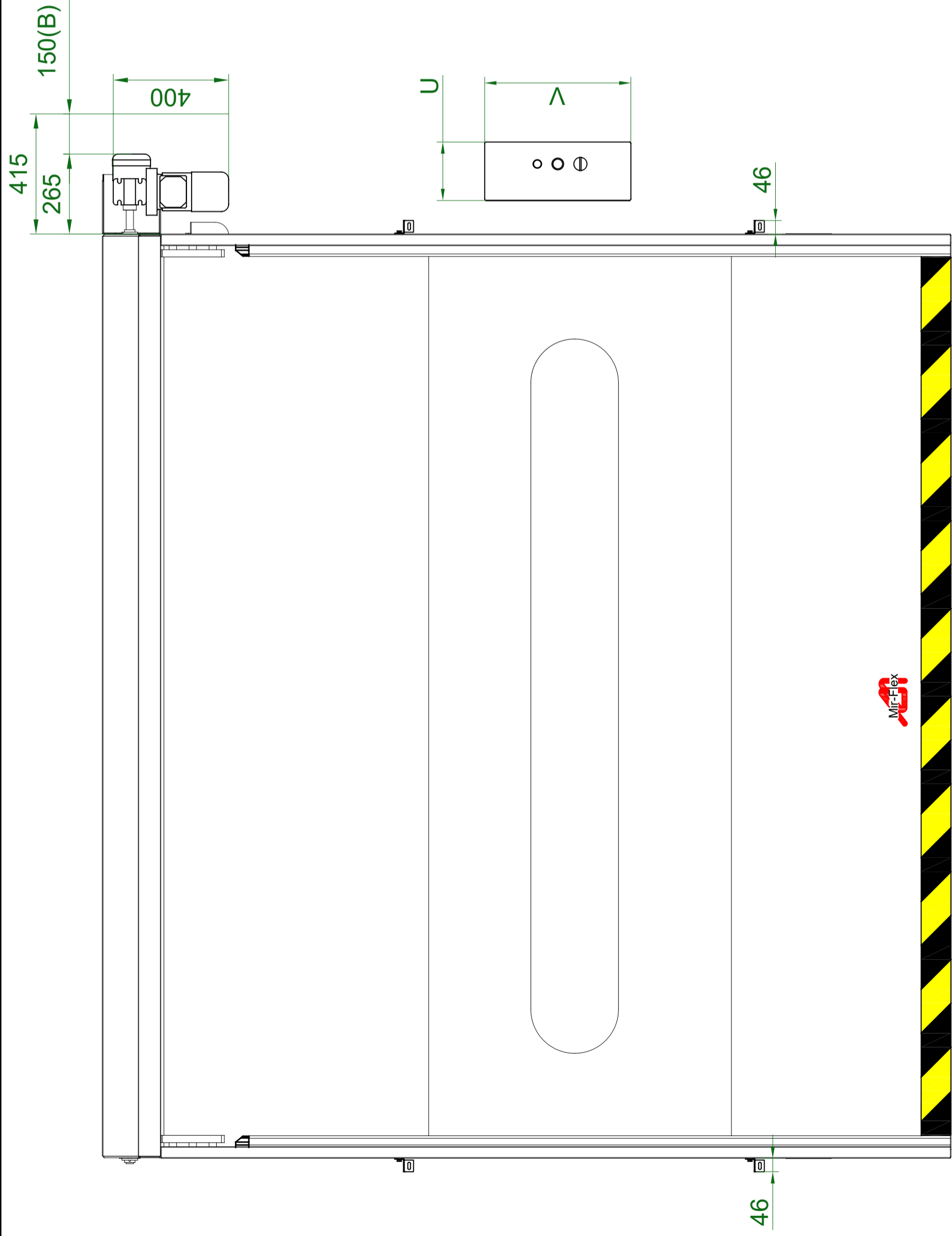
ELECTRICAL BOX	DIM. U x V x W
RSP	200 x 500 x 160
RSP INOX	300 x 400 x 150
RSP PLM	330 x 430 x 200

Model: Mir Flex with frontal motor
Maximum dimensions: 3300x3500 (width x height)
mounting conditions: door mounted inside / between walls
Motor: Pact
Electrical supply: Three phase 230/400 III
For special dimensions consult our technical office

Nombre		Fecha
ofi.technical		18/04/12
Dibujado		
Comprobado		
Familia: Rápidas		
Tipo: Mir Flex		
Material:		
Código: xxxxxx		
Conjunto al que pertenece: xxxxxx		
Hoja 1 de 3		

A Installation allowance		VOLTAGE (V) - FREQUENCY (Hz)	POWER SUPPLY CABLE
MOTOR	CURRENT (A) 230/415 V	2x230/400-50	3x1,5+earth/10A
0,5 CV	POWER 0,37 KW	1,7/1,0	





ELECTRICAL BOX	DIM. U x V x W
*RSPV (standard)	200 x 500 x 125
RSPV PLM POLIESTER	330 x 430 x 200
RSPV INOX	300 x 400 x 150
RSPV ECO	230 x 310 x 130

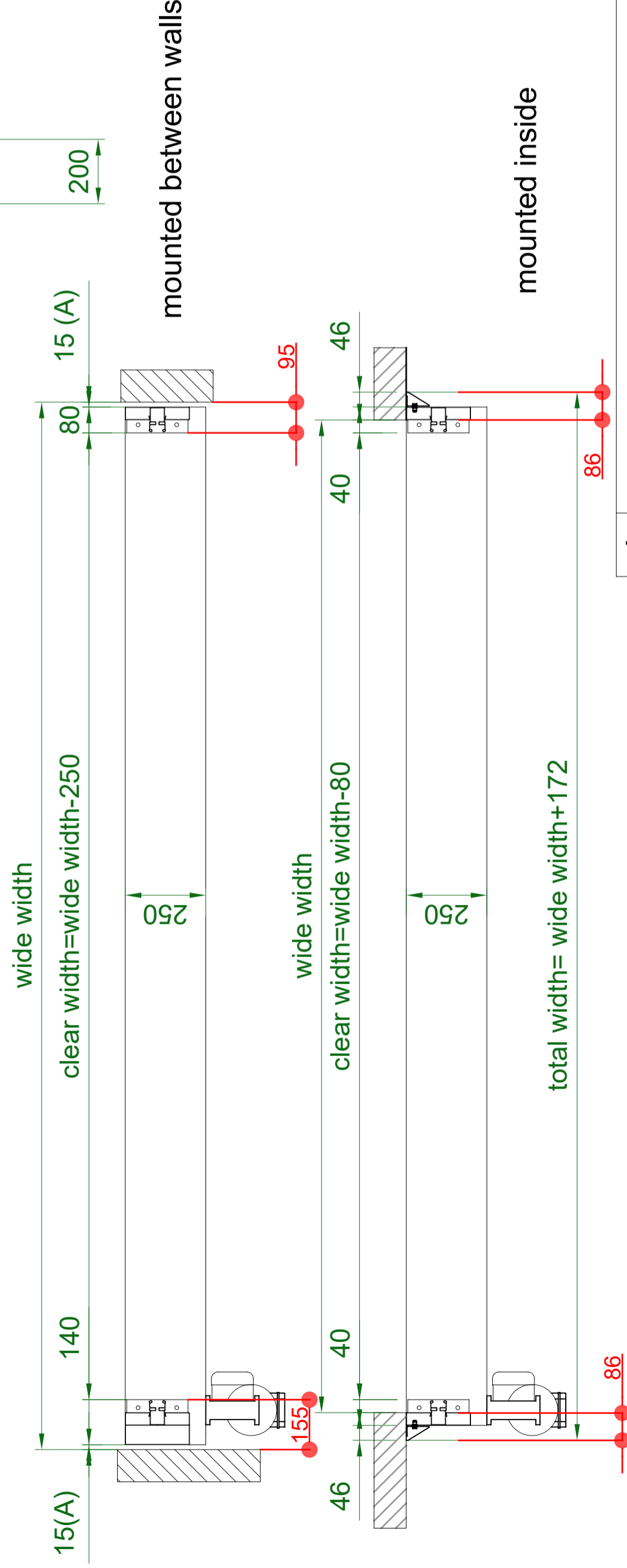
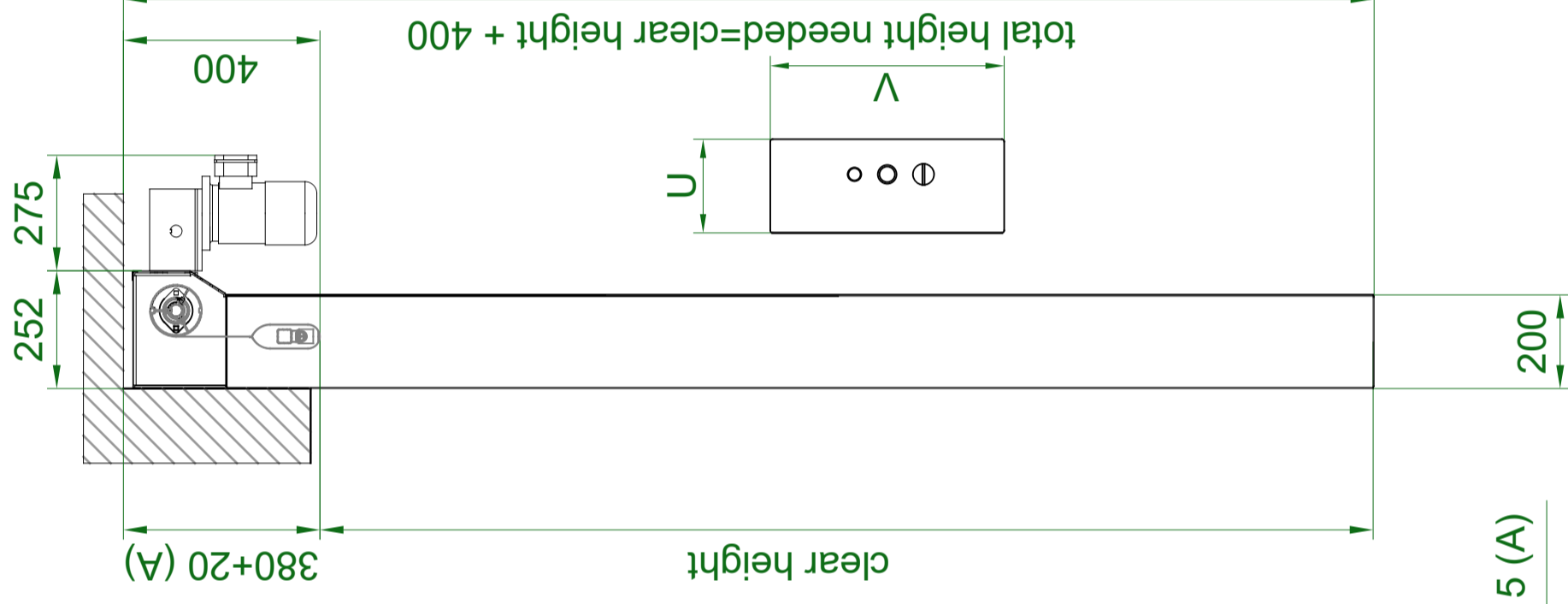
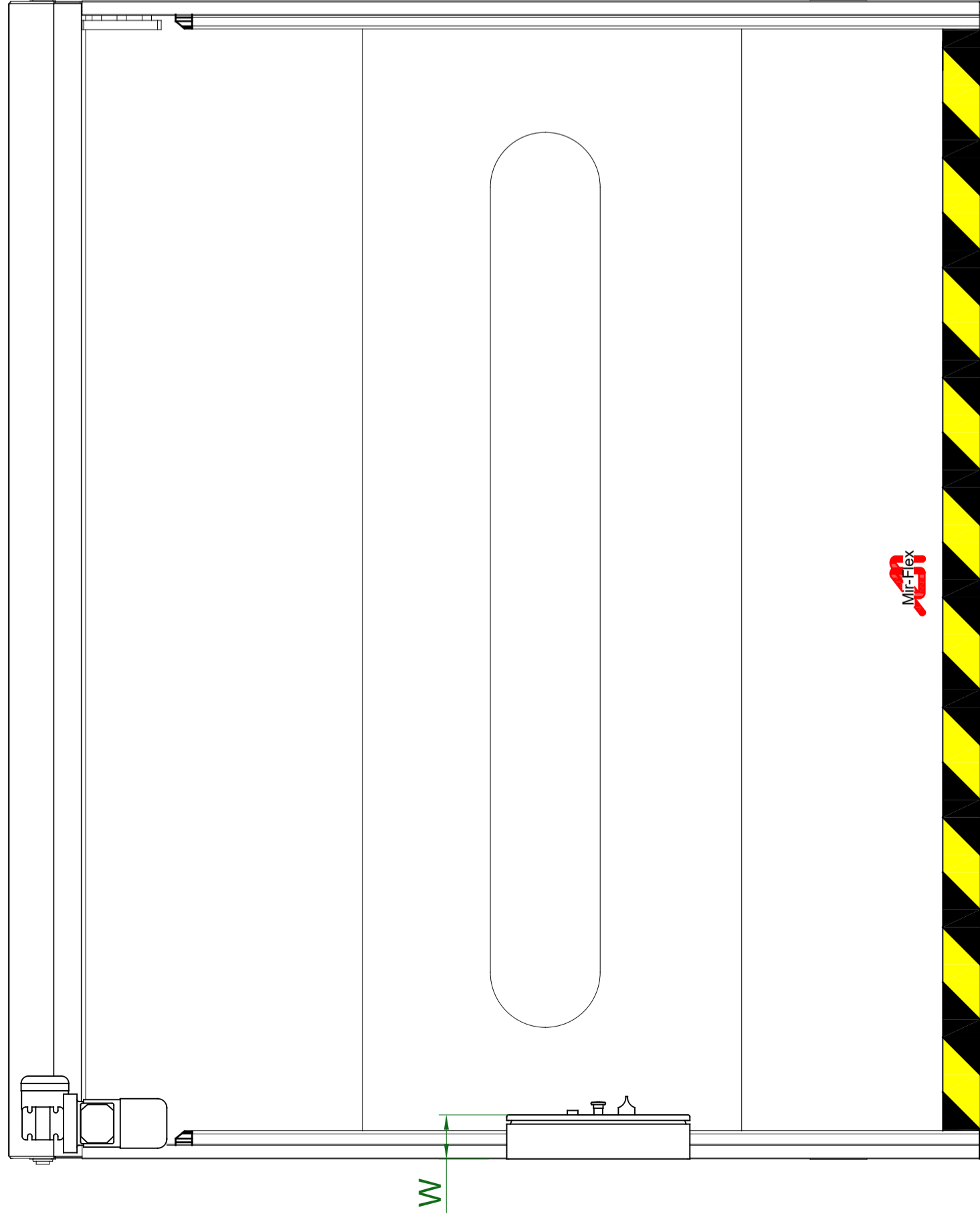
Model:	Mir Flex with lateral motor	
Maximum dimensions:	3300x3500 (width x height)	
mounting conditions:	door mounted inside	
Motor:	Pact	
Electrical supply:	monophase 230 II	
For special dimensions consult our technical office		

Dibujado	Nombre	Fecha
Comprobado	ofi. tecnica	18/04/12
Familia:	Rápidas	
Título:	Mir Flex	
Tipo:	Mir Flex	
Material:	xxxxxx	
Código:		Hoja 1 de 3
Conjunto al que pertenece:		



17100 LA BISBAL
Girona Spain
Tel. +34 972640620
Fax. +34 972642451

A	Installation allowance			
B	For stroke limit switch setting			
MOTOR	POWER	CURRENT (A)230 V	VOLTAGE (V) -FREQUENCY (Hz)	POWER SUPPLY CABLE
0,5 CV	0,37 KW	1,7	2x230-50	2x1,5+earth/10A



ELECTRICAL BOX	DIM. U x V x W
*RSPV (standard)	200 x 500 x 125
RSPV PLM POLIESTER	330 x 430 x 200
RSPV INOX	300 x 400 x 150
RSPV ECO	230 x 310 x 130

Model:	Mir Flex with frontal motor	
Maximum dimensions:	3300x3500 (width x height)	
mounting conditions:	door mounted inside/ between walls	
Motor:	Pact	
Electrical supply:	monophase 230 II	
For special dimensions consult our technical office		
Dibujado	Nombre	Fecha
Comprobado	ofi.technical	18/04/12
Familia:	Rápidas	Título: Mir Flex

			
<small>17100 LA BISBAL Girona Spain Tel. +34 972640620 Fax. +34 972642451</small>			
Tipo: Mir Flex		Código: xxxxxx	
II Material:		Conjunto al que pertenece: xxxxxx	
		Hoja 1 de 3	

MOTOR	POWER	CURRENT (A)230 V	VOLTAGE (V) -FREQUENCY (Hz)	POWER SUPPLY CABLE
0,5 CV	0,37 KW	1,7	2x230-50	2x1,5+earth/10A