

INSTANT ROLL

ROLLING WINDBREAK SPEED DOOR

The model INSTANT ROLL from Angel Mir is a rolling speed door suitable for interior or exterior areas depending on the size.

It withstands moderate air or wind pressures or depressions, without undergoing wear, tears or deformations, remaining therefore unchanged for many years.

Maximum sizes indoors: 5000 x 5000 with a wind tolerance class 0

Maximum sizes outdoors: 4000 x 4000 with a wind tolerance class 1

STRUCTURE

General:

- Self-supporting (it has to be fastened to a structure or wall)

Element	Material	Details
Guide	Galvanized steel sheet	Profiled making up a very resistant column.
Edges	Protected with nylon industrial brush, on aluminium fastening profile.	To increase the air sealing and eliminate friction with the canvas.
Base	Galvanized steel sheet	It has holes for its fastening to the ground.
Fastening	Anchoring suitable to the kind of support (metallic, chemical dowels, etc.).	Fastening to the ground and, according to the height and the required wind pressure, several intermediate fastenings on walls or on a resistant structure.
Finishing	Painted grey RAL 7046 or another RAL colour chosen by the customer.	

× Head:

Element	Material	Details
Crosspiece	Galvanized steel sheet.	Box-shaped.
Accessible back lid	Galvanized steel sheet.	For access to the internal machinery.
Side supports	Galvanized steel sheet.	It has housings for the ball bearings. Welded to the crosspiece. .
Shaft	Aluminium drum.	Of Ø110mm reinforcement radius and hollow central knot with keyway.
	Solid profile of galvanized steel.	Of Ø25.4 mm with keyway along its entire length.
* The whole unit makes up a very strong beam that, resting on the feet-guide, supports the weight of the canvas and the lifting mechanism (gear-motor, shaft, etc.).		
Fastening	Anchoring suitable to the kind of support (metallic, chemical dowels, etc.).	It is fixed on the lintel or a resistant structure to keep the vertical position and to avoid bulging or movements due to the shaft rotation.

Structure options

- ✓ Stainless steel AISI 304 or 316.

CANVAS

Element	Mass (kg/m ²)	Work temperature (°C)	Characteristics
Canvas	0.95	-20...+70	Base of high strength polyester technical fabric, coated with dyed PVC.
Material		Characteristics	
Side reinforcements	Rectangular tubular profile round shaped made of fiberglass and polyester composite. Depending on the setting, they are inserted with solid composite profile.		Manufactured by poltrusion.
Skirting board	Galvanized steel tube.		To support the contact band.
Fitting to the ground	Bottom bag of polyester coated with PVC.		Yellow with black diagonal stripes and with Velcro® opening system for access to the contact band, and Radio Band transmitter.
Welding	All welding through high frequency including windows.		
Finishing	Bright lacquered on both sides; colour to be chosen from a wide range.		

Colours	Colours similar to RAL						
Reaction to fire M2	Red 3002	Yellow 1003	Green 6026	Blue 5005	Grey 7016	Grey 7040	White 9003
Reaction to fire M3	Ivory 1014	Orange 2004	Orange 2002	Black 9005	Brown 8016	Grey 9006	

	Components	Composition
Characteristics of resistance	Resistance to the wind	Standard: Doors >4000 x 4000: Class 0 (without wind forecast). Standard: Doors <4000 x 4000: Class 1 (80 km/h).
Other resistances to the wind		To enquire.

Canvas options
✓ PVC windows. Transparent glass quality 1mm thick. Positive temperatures.

MOTORISATION

Element	Characteristics
Operator	Irreversible gear motor for intensive use from Angel Mir, with position switches driven by the output shaft of the reducer.
Situation	On one side of the head.
Position switches	Mechanical.
Shaft	Solid, with exit for flexible connection between the motor and the shaft to absorb vibrations and increase the engine reliability.
Electrobrake	For precise positioning and canvas lock.
Unlocking	Through handle.
Manual drive	Through crank.
Voltage in volts	230 / 400 V three-phase
Frequency in Hz	50 Hz
Power	0.4...0.75CV / 0.29...0.55 kW, depending on door sizes.
Protection IP	IP 54

Motor options
✓ Front motor with chain drive.
✓ Covering motor lid of painted galvanized steel sheet.
✓ Special voltages and frequencies.
✓ Anti-moisture protection joint for the electrobrake.

Control panel	
Model	RSPV
Keys on exterior lid	Switches for opening and emergency stop. Voltage breaker.
Programmable logic controller	Programmable relay.
Frequency inverter	Opening and closing adjustable speeds. Speed opening, fast. Speed closing, slow. Acceleration ramps at the beginning of the movement. Deceleration ramps at the end of the movement. Protection of the motor because overconsumption and lack of phase
Display registering status and information	Reports on: position, kind of failure and operation counter. Switches for opening and closing through maintained contact and basic programming.
Control box IP	Painted steel, with input/output cable glands.
Protection	IP 65 offset with cable glands. IP 55 when assembled at the bottom of the door.
Voltages	Power supply: 230 V single-phase. Manoeuvre: 24V
Control panel electrical installation to the motor and to the fixed elements at the feet	Protected by aluminium accessible channel, fixed at the door foot by plastic supports.

Control panel options
✓ Special voltages and frequencies.
✓ Fiberglass control box with increased or stainless steel IP.

OTHER CHARACTERISTIC ELEMENTS / QUALITIES / OPTIONS

× **Door electrical data**

The voltage wiring up to the panel unit has to be completed by a licensed electrician and must be protected according to the existing rules and standards.

The use of 300mA differential switches is recommended.

STANDARD electrical characteristics	
Voltage V	230 V single-phase
Frequency Hz	50 Hz
Power kW	0.39...0.65 kW, depending on door size.
Protection	IP 54

For other voltages and frequencies, please ENQUIRE

Other characteristics	
Work temperature	Standard: +5...+50°C It cannot be used in cold stores with negative temperature.

Safety	Used procedure
Passage	Photocell with transmitter / receiver located on the jambs of the structure.
Anti- crushing	Wireless contact band on main edge.
Vison	Canvas bottom painted with safety stripes (diagonal yellow / black).
Manoeuvres	Intermittent lights indicating the manoeuvre: exterior and interior. (UNE-EN 12453: 2000, 5.1.3 c)

× **Door speeds**

Speeds (m/s) *	Opening	Opening deceleration until	Closing
	0.82 m/s	0.6 m/s	0.6 m/s

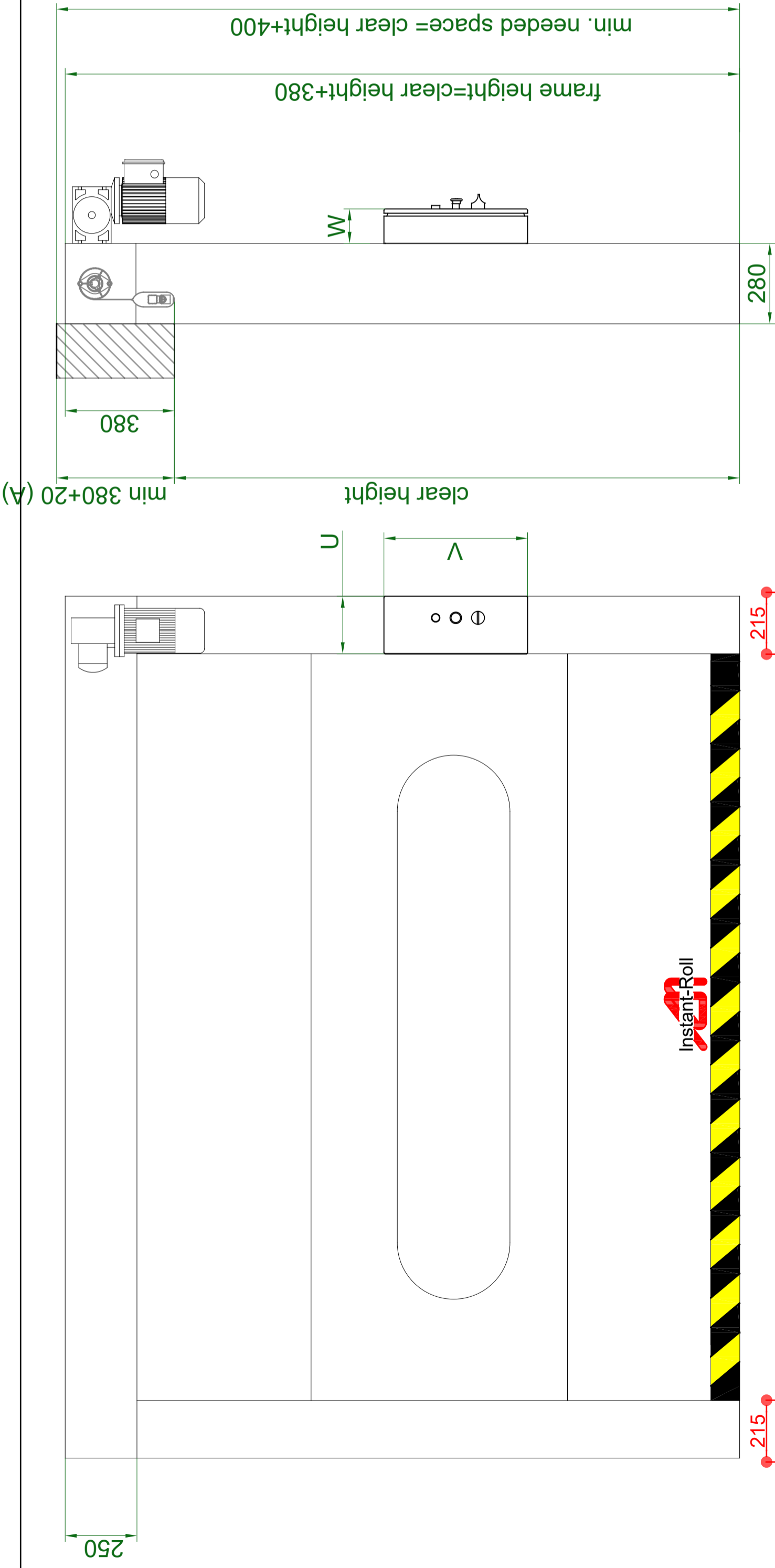
For other speeds, please ENQUIRE

General options
✓ Certified doors ATEX for explosive environments (dust, paint or gas).

For special sizes, please ENQUIRE

CERTIFICATES AND STANDARDIZATIONS

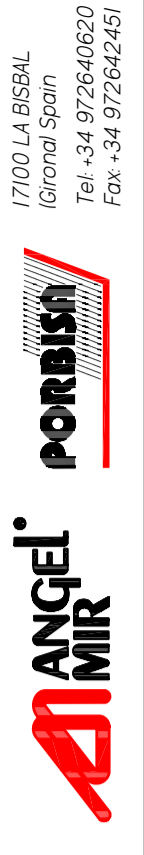
Our doors are manufactured according to the UNE-EN 12453:2001 standard and meet the 98/37/CEE, 89/336/CEE, 89/106/CE y 73/23/CEE harmonization directives. They are tested and certified by a notified body, in compliance with the 13241-1 standard.

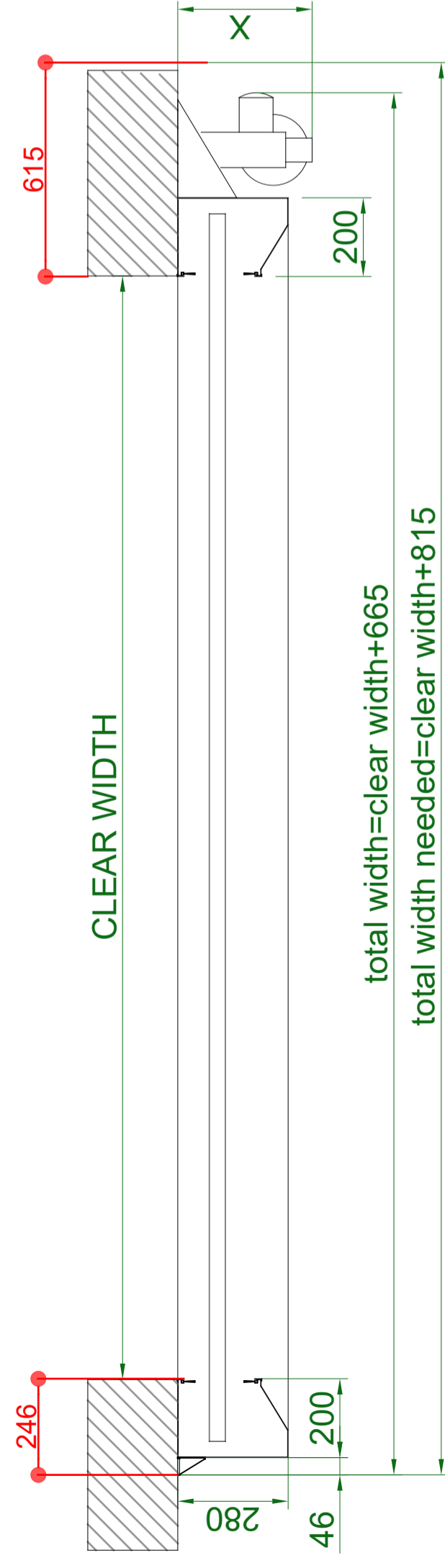
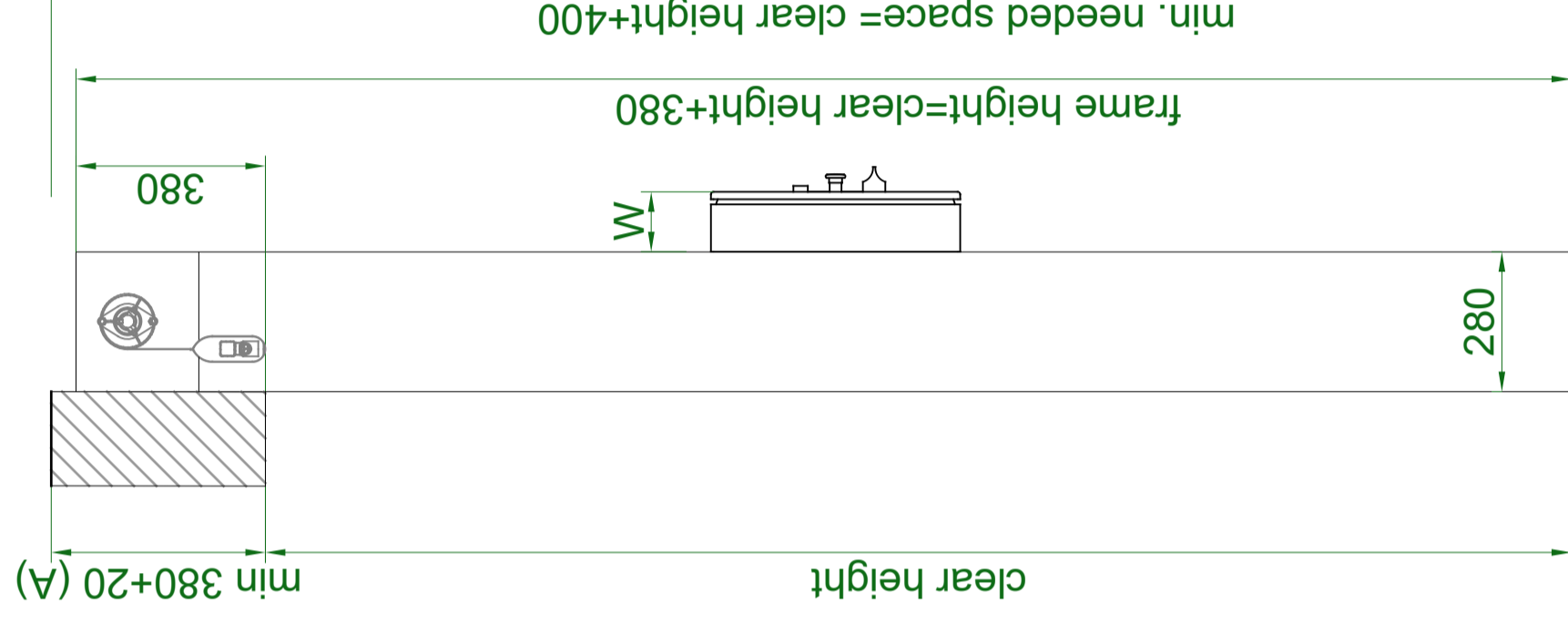
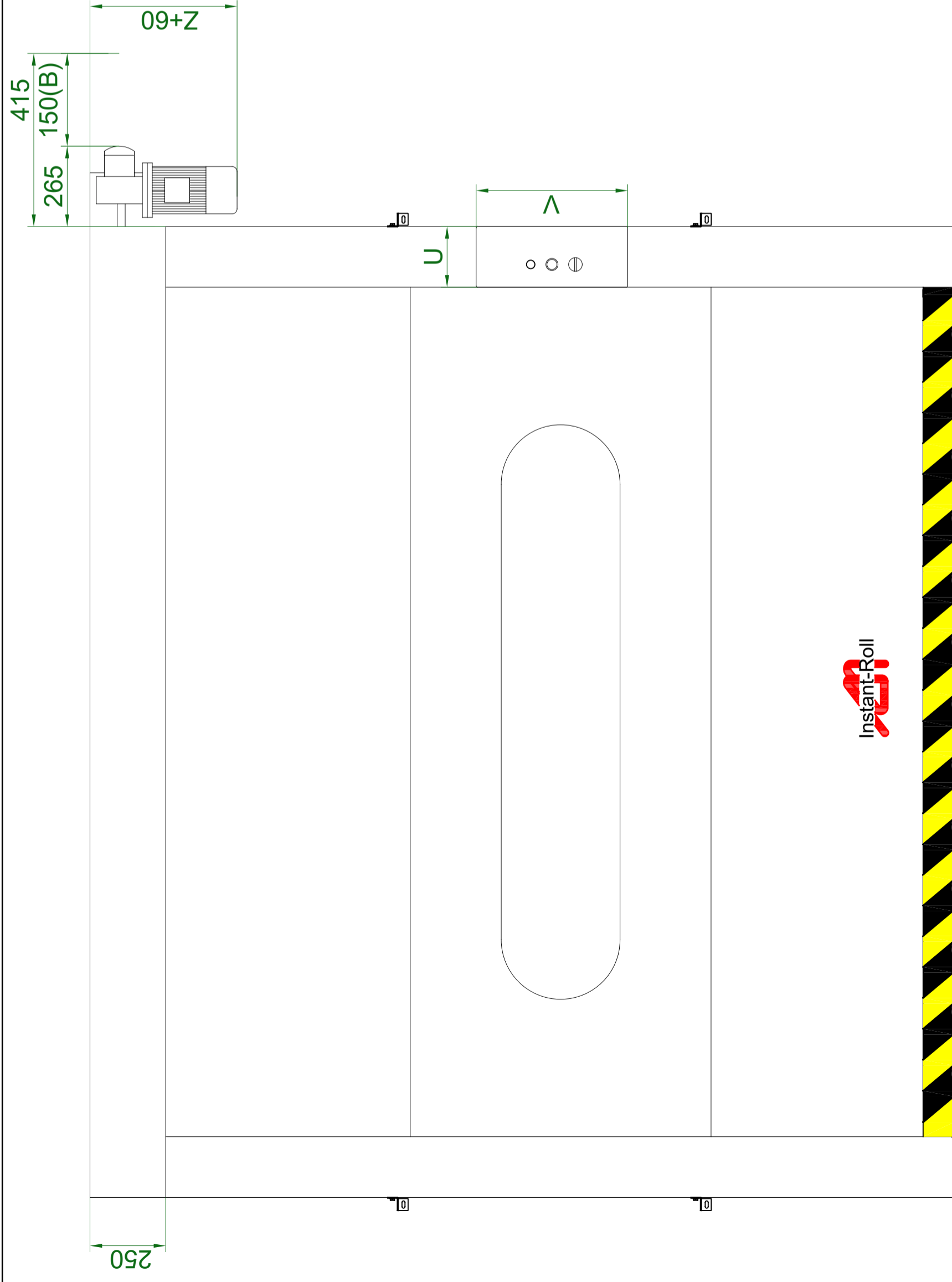


A	Installation allowance	DIM. U x V x W
ELECTRICAL BOX		200 x 500 x 160
RSP		300 x 400 x 150
RSP INOX		330 x 430 x 200

Model:	Instant Roll with frontal motor	
Maximum dimensions:	5000x5000 (width x height)	
mounting conditions:	door mounted between walls	
Motor:	Pact	
Electrical supply:	three phase 230/400 III	
For special dimensions consult our technical office		
Dibujado	Nombre	Fecha
Comprobado	ofi.technical	18/04/12
Familia:	Rápidas	Título: Instant Roll
Tipo: Instant Roll	Código: xxxxxx	
Material:	Hoja 1 de 3	

DOOR DIM.	MOTOR	POWER	CURRENT (A) 230/415 V	VOLTAGE (V) - FREQUENCY (Hz)	POWER SUPPLY CABLE	MOTOR DIM XxZ
up to 9 m ²	0,5 CV	0,37 KW	1,7/1,0	3x230/400-50	4x1,5+earth/10A	245 x 400
up to 21 m ²	0,75 CV	0,55 KW	3,8/2,2	3x230/400-50	4x1,5+earth/10A	300 x 470
up to 25 m ²	1CV	0,75 KW	3,6/2,1	3x230/400-50	4x1,5+earth/10A	300 x 470





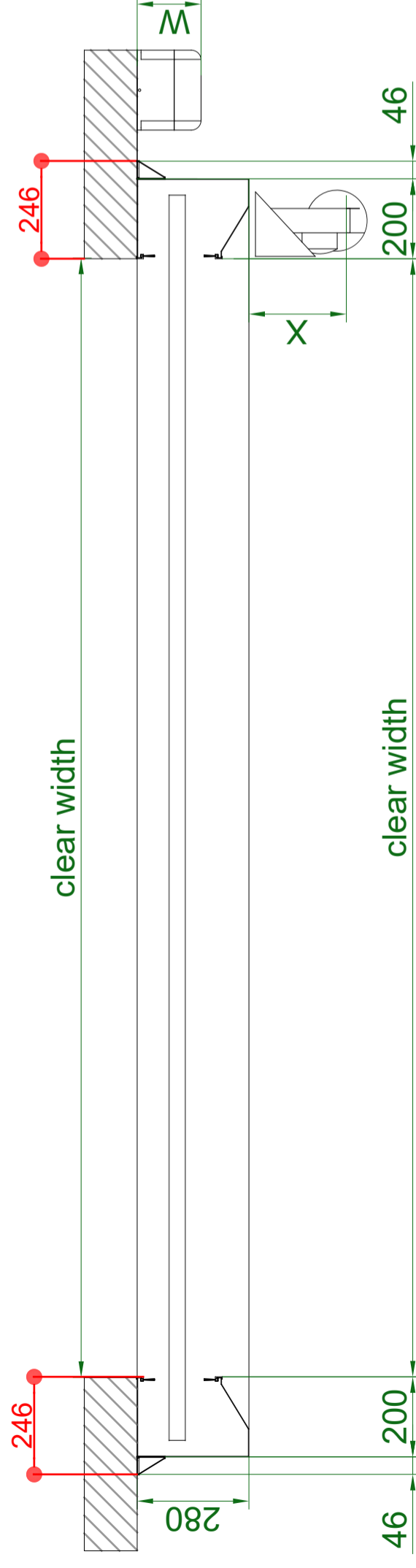
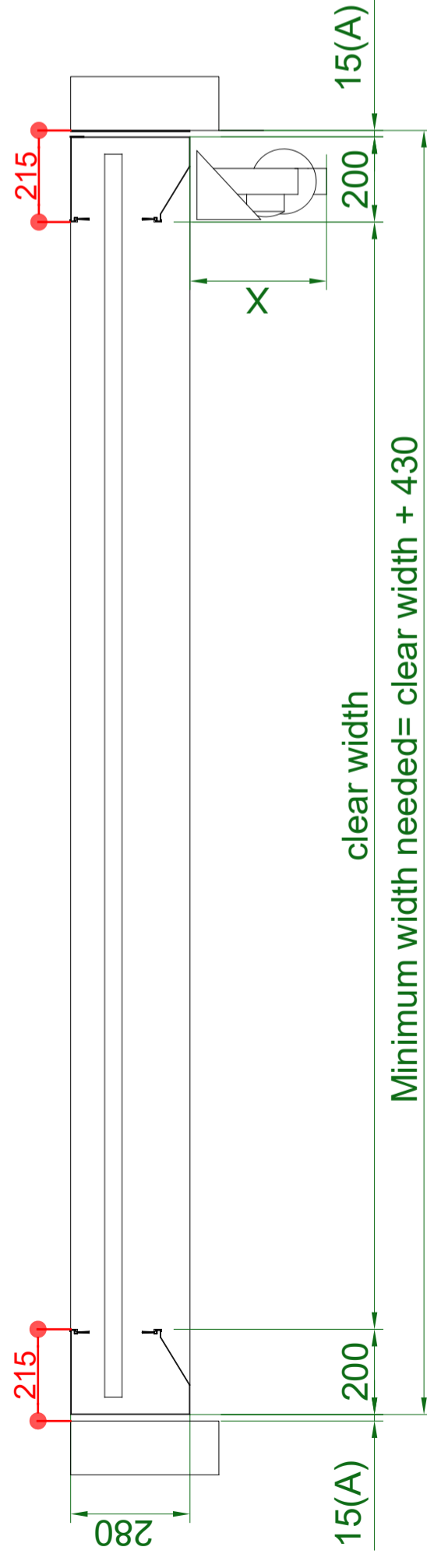
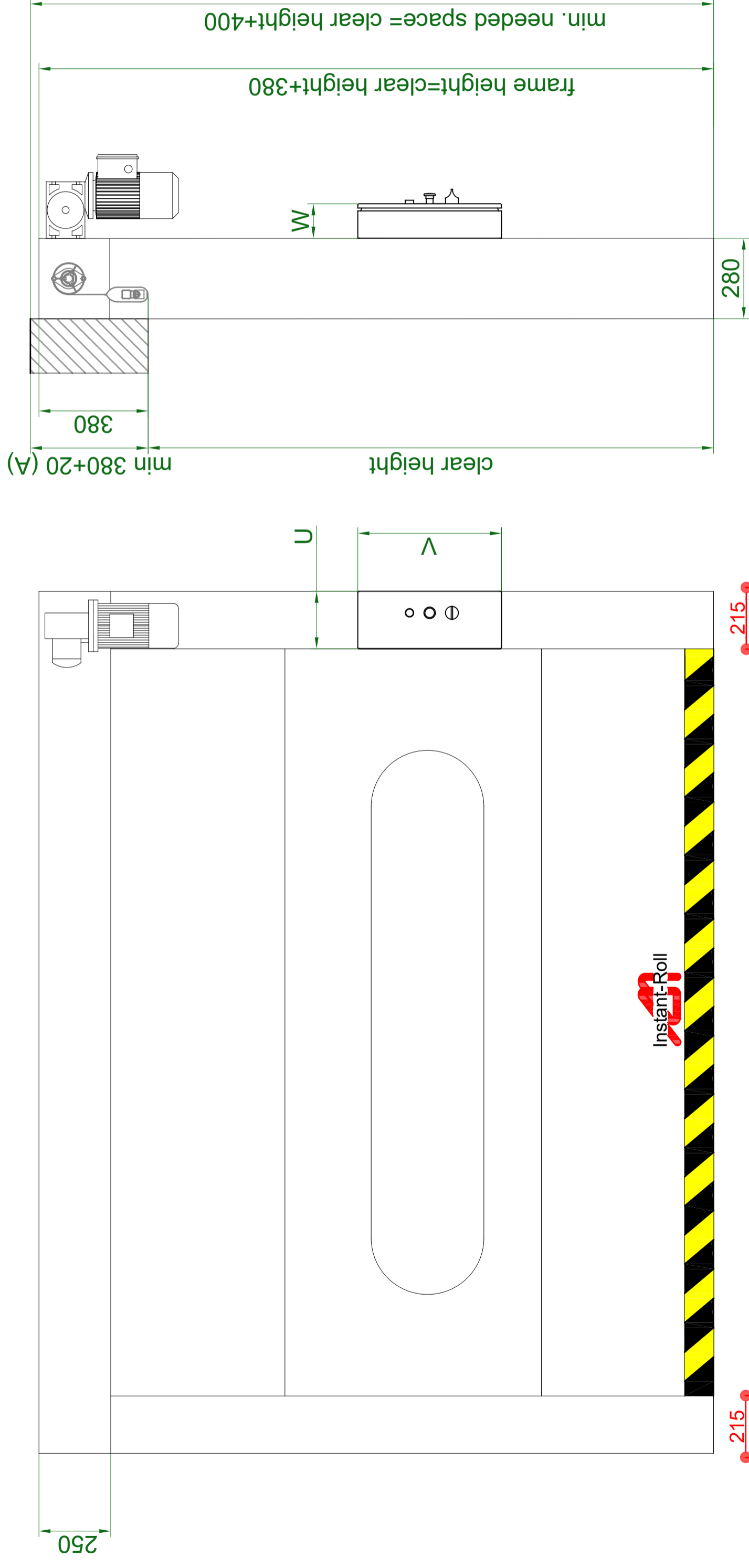
ELECTRICAL BOX	DIM. U x V x W
RSP	200 x 500 x 160
RSP INOX	300 x 400 x 150
RSP PLM	330 x 430 x 200

Model:	Instant Roll with lateral motor	
Maximum dimensions:	5000x5000 (width x height)	
mounting conditions:	door inside mounted	
Motor:	Pact	
Electrical supply:	three phase 230/400 III	
For special dimensions consult our technical office		
Dibujado	Nombre	Fecha
Comprobado	ofi. tecnica	18/04/12
Familia:	Rápidas	
Título:	Instant Roll	
Tipo:	Instant Roll	
l/l	Material:	Código: xxxxxx



 17100 LA BISBAL
 Girona Spain
 Tel. +34 972640620
 Fax. +34 972642451

DOOR DIM.	MOTOR	POWER	CURRENT (A) 230/415 V	VOLTAGE (V) - FREQUENCY (Hz)	POWER SUPPLY CABLE	MOTOR DIM XxZ	Installation allowance	
							A	B
up to 9 m ²	0,5 CV	0,37 KW	1,7/1,0	3x230/400-50	4x1,5+earth/10A	245 x 400	For stroke limit switch setting	
up to 21 m ²	0,75 CV	0,55 KW	3,8/2,2	3x230/400-50	4x1,5+earth/10A	300 x 470		
up to 25 m ²	1 CV	0,75 KW	3,6/2,1	3x230/400-50	4x1,5+earth/10A	300 x 470		



A Installation allowance		DIM. U x V x W
ELECTRICAL BOX		200 x 500 x 125
*RSPV (standard)		200 x 500 x 125
RSPV PLM POLIESTER		330 x 430 x 200
RSPV ECO		230 x 310 x 130
RSPV INOX		300 x 400 x 150

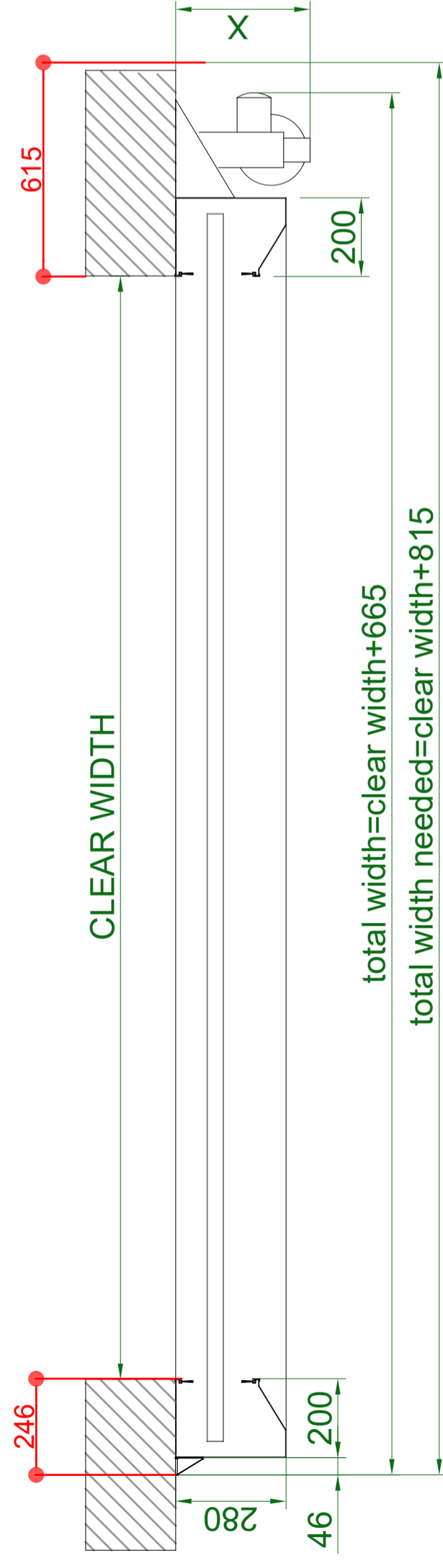
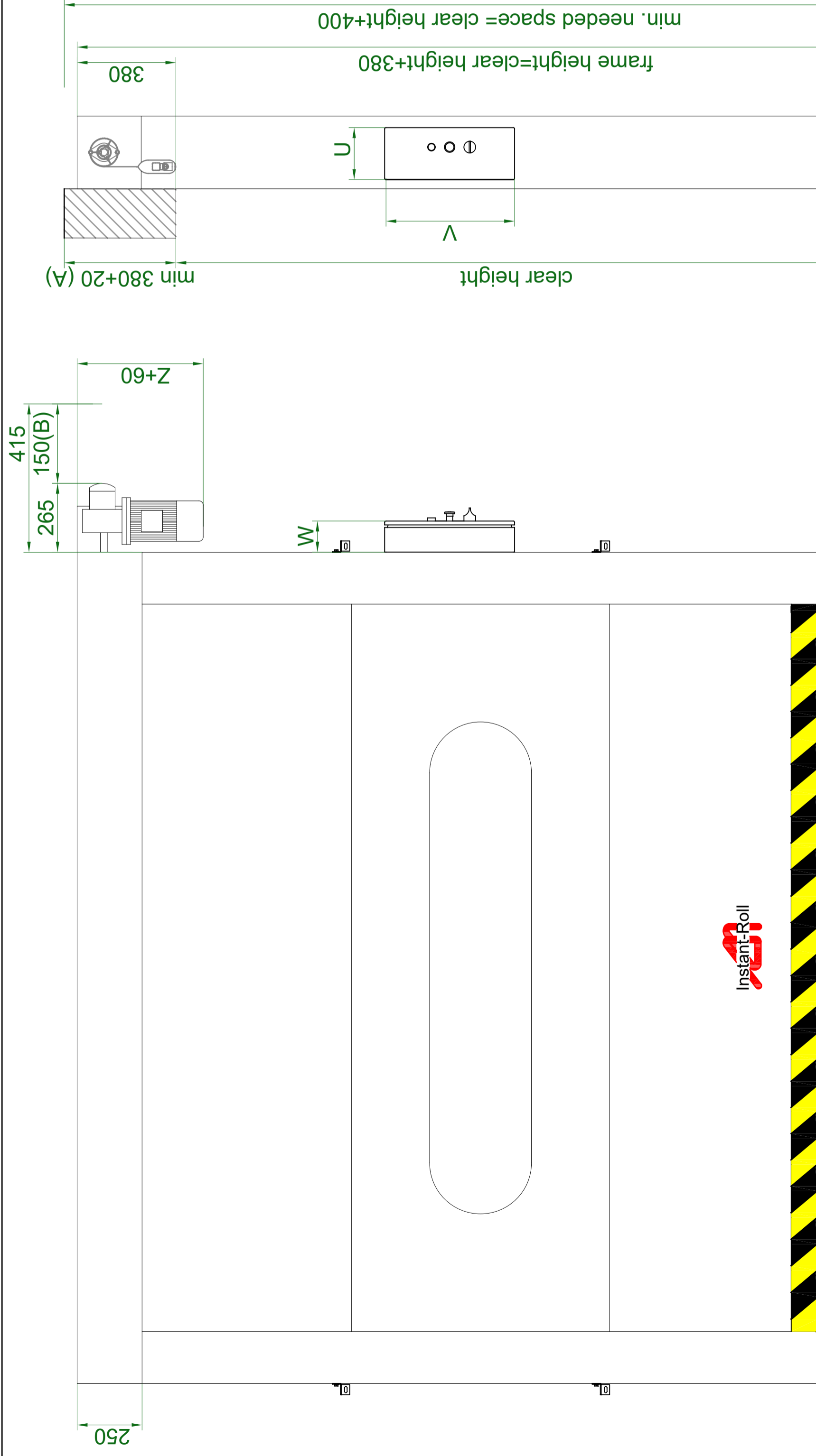
Model:	Instant Roll with frontal motor	
Maximum dimensions:	5000x5000 (width x height)	
mounting conditions:	door mounted between walls	
Motor:	Pact	
Electrical supply:	monophase 230 II	

For special dimensions consult our technical office

Dibujado	Nombre	Fecha
Comprobado	ofi. tecnica	18/04/12
Familia:	Rápidas	
Título:	Instant Roll	
Tipo:	Instant Roll	
Material:		



DOOR DIM.	MOTOR	POWER	CURRENT (A)	VOLTAGE (V) - FREQUENCY (Hz)	POWER SUPPLY CABLE	MOTOR DIM
up to 9 m ²	0,5 CV	0,37 KW	1,7	2x230-50	2x1,5+earth/10A	245 x 400
up to 21 m ²	0,75 CV	0,55 KW	3,8	2x230-50	2x1,5+earth/10A	300 x 470



ELECTRICAL BOX	DIM. U x V x W
*RSPV (standard)	200 x 500 x 125
RSPV PLM POLIESTER	330 x 430 x 200
RSPV ECO	230 x 310 x 130
RSPV INOX	300 x 400 x 150

Model:	Instant Roll with lateral motor	
Maximum dimensions:	5000x5000 (width x height)	
mounting conditions:	door inside mounted	
Motor:	Pact	
Electrical supply:	monophase 230 II	
For special dimensions consult our technical office		

A	Installation allowance
B	For stroke limit switch setting

DOOR DIM.	MOTOR	POWER	CURRENT (A)	VOLTAGE (V) - FREQUENCY (Hz)	POWER SUPPLY CABLE	MOTOR DIM XxZ
up to 9 m ²	0,5 CV	0,37 KW	1,7	2x230-50	2x1,5+earth/10A	245 x 400
up to 21 m ²	0,75 CV	0,55 KW	3,8	2x230-50	2x1,5+earth/10A	300 x 470

Dibujado	Nombre	Fecha
Comprobado	ofi.technical	18/04/12
Familia:	Rápidas	Título: Instant Roll
Tipo: Instant Roll	Código: xxxxxx	
Material:	Conjunto al que pertenece: xxxxxx	
Hoja 1 de 3		



17100 LA BISBAL
Girona Spain
Tel. +34 972640620
Fax. +34 972642451