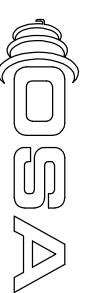
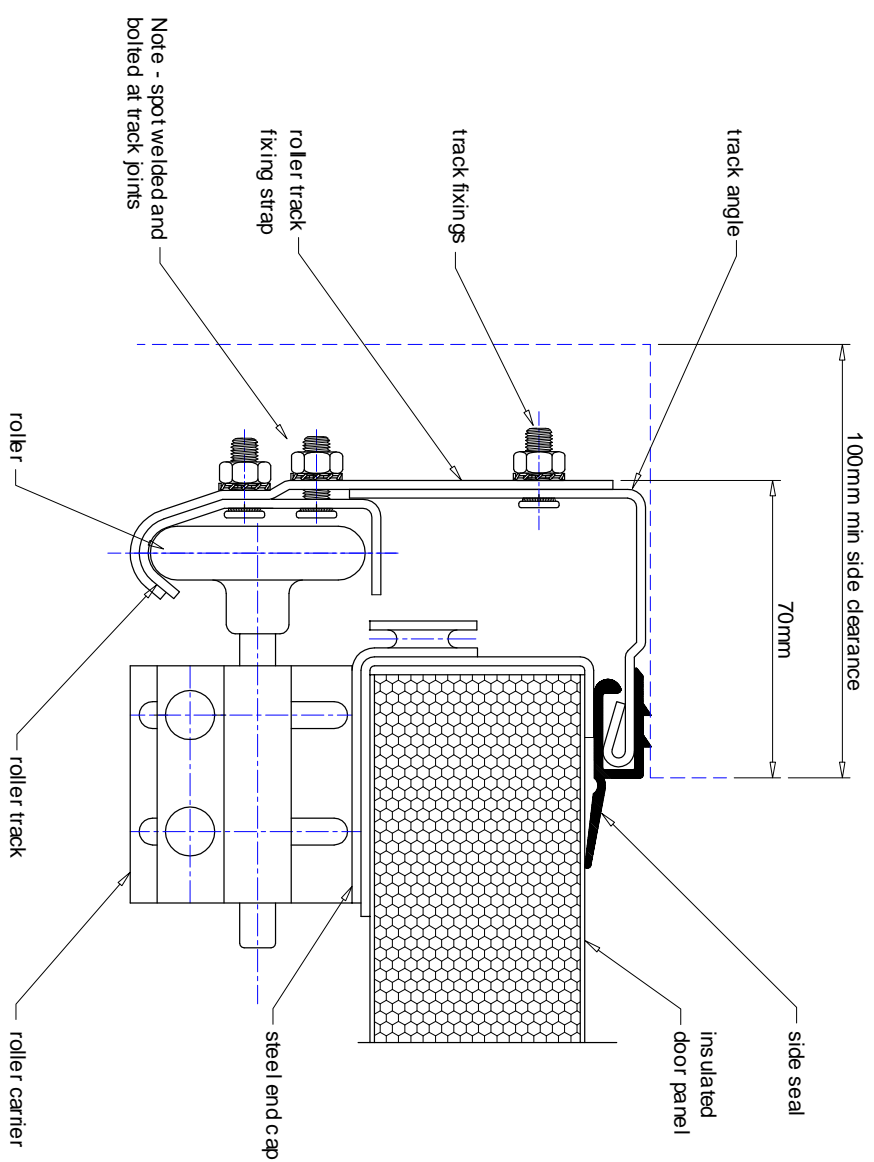


EXPLODED VIEW OF TRACK ASSEMBLY



DOOR PARTS LIMITED

Ashville Industrial Estate, Runcom, Cheshire, WA73EZ, UK.

Tel: 0844 499 0050 Fax: 0844 499 0060

E-mail: sales@osadoorparts.co.uk

STANDARD DETAIL

Typical track to jamb mounting detail for OSA Sectional Overhead Doors.

E+OE

Ref - OSA/ATAV/003B